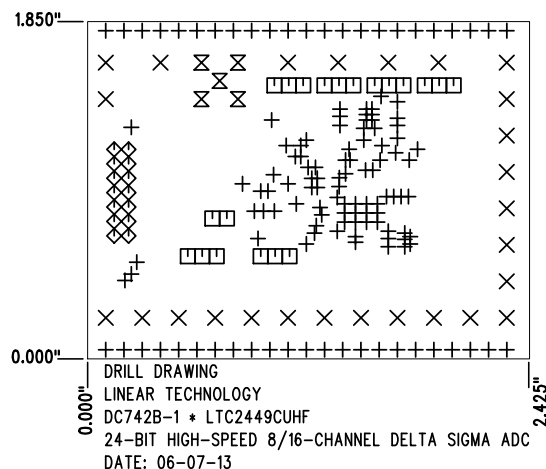
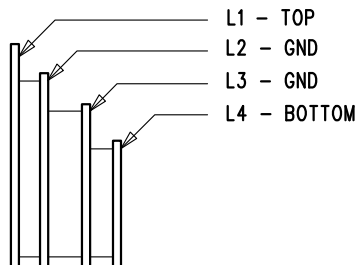


REVISION HISTORY				
ECO	REV	DESCRIPTION	APP. ENG.	DATE
-	1	REBUILD WITH CHANGE	MARK T.	06-07-13

SHOWN FROM TOP SIDE



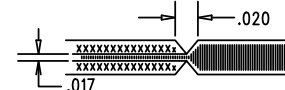
LAYER STRUCTURE

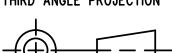



SIZE	QTY	SYM	PLATED	TOL
0.01	135	+	YES	+/-0.003"
0.063	26	×	YES	+/-0.003"
0.035	20	□	YES	+/-0.003"
0.04	14	◇	YES	+/-0.003"
0.07	5	⊗	YES	+/-0.003"

NOTES: UNLESS OTHERWISE SPECIFIED

- FAB PER IPC-A-600.
- MATERIAL: -LEAD FREE ASSEMBLY COMPLIANT, ISOLA FR-370HR OR EQUIVALENT.
 -FINISHED THICKNESS TO BE 0.062" +/- .005"
 -TOTAL OF 4 LAYERS WITH 2 OZ. CU ON THE OUTER LAYERS AND 2 OZ. CU ON THE INNER LAYERS.
 -FLAMMABILITY RATING: 94 V-0 MINIMUM.
- SIZE: CUT TO DIMENSIONS AND TOLERANCES SHOWN.
 0.00" ARE PRIMARY DATUMS.
- DRILLING: -DRILL HOLES PER SCHEDULE. PLATE THROUGH HOLES WITH COPPER, 0.001" THICK MIN.
 -ALL HOLE SIZES ARE SPECIFIED AFTER PLATING.
 -HOLE LOCATION TOLERANCES ARE +/-0.003" IN RELATION TO CENTER
- FINISH: -SMOBC USING LPI BOTH SIDES, COLOR GREEN.
 -GOLD IMMERSION BOTH SIDES.
 -FOR SILKSCREENS: USE WHITE NON-CONDUCTIVE INK.
- DO NOT ALTER ARTWORK e.g. TO ADD LOGO OR DATE CODE.
 PAD SIZE CAN BE MODIFIED TO MEET END FINISH.
- PCBS ARE TO BE RoHS COMPLIANT.
- SCORING FOR PANELIZED PCB (PRODUCTION FAB ONLY):



UNLESS OTHERWISE SPECIFIED DIMENSIONS ARE IN INCHES TOLERANCES: 0.XX" = ±0.01" 0.XXX" = ±0.005" INTERPRET DIM AND TOL PER ASME Y14.5M-1994 THIRD ANGLE PROJECTION 	APPROVALS		 <div>1630 MCCARTHY BLVD MILPITAS, CA 95035 PH: (408)432-1900 www.linear.com LTC CONFIDENTIAL- FOR CUSTOMER USE ONLY</div>
	PCB DES.	KIM T.	
	APP ENG.	MARK T.	
TITLE: FABRICATION DRAWING 24-BIT HIGH-SPEED 8/16-CHANNEL DELTA SIGMA ADC			SIZE IC NO. REV N/A LTC2449CUHF 1 DEMO CIRCUIT 742B
SCALE = NONE			
FILENAME: DC742B-1.PCB			SHT 1 OF 1