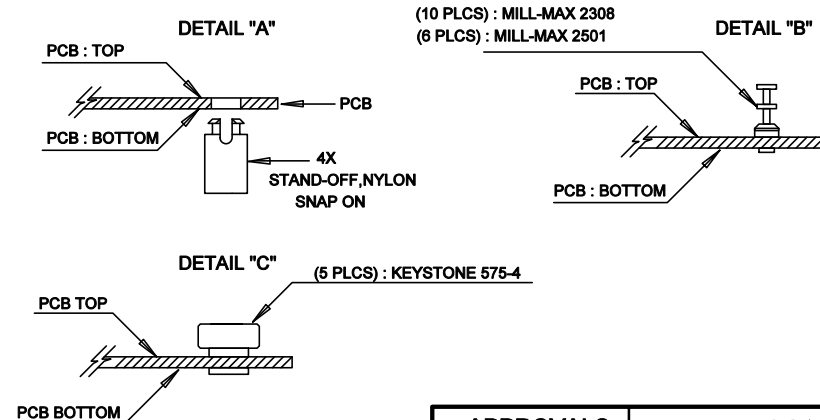
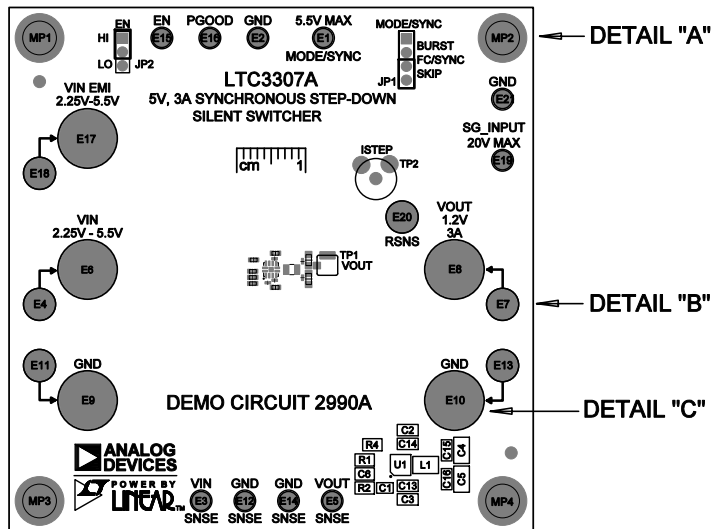




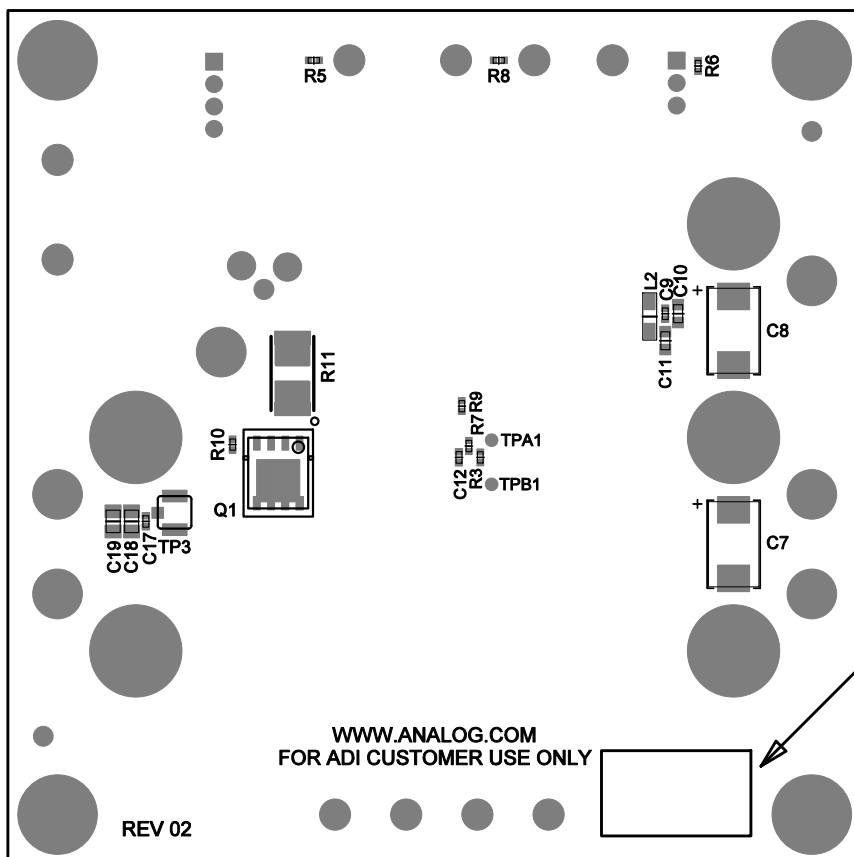
REVISION HISTORY				
ECO	REV	DESCRIPTION	APP. ENG.	DATE
-	02	PRODUCTION	MM	09-20-19



**NOTES: UNLESS OTHERWISE SPECIFIED**

1. WORKMANSHIP SHALL BE IN ACCORDANCE WITH IPC-A-610.
2. ASSEMBLY REFLOW PROFILE SHALL BE IN ACCORDANCE WITH J-STD-020 WITH MAXIMUM SOLDER TEMPERATURE OF 250 DEGREES CELSIUS.
3. PARTS TO OMIT WILL BE SPECIFIED ON THE BILL OF MATERIALS  
LOCATIONS OF OMITTED PARTS SHALL BE FREE OF SOLDER.  
MASK THE SOLDER STENCIL WHERE SMT PARTS ARE OMITTED.
4. INSTALL SHUNTS AS SHOWN ON ASSY DRAWING.
5. DEPANELIZE BOARDS AFTER ASSEMBLY AND ROUTE-OUT THE BREAKOUT TABS ON FOUR SIDES OF THE BOARD EDGE.
6. APPLY ASSEMBLY STAMP OR QA STAMP TO BOTTOM OF BOARD (UNSHOWY AREA).
7. INSTALL TURRETS, STAND-OFFS AS SHOWN BELOW:
8. APPLY DEMO S/N AT AREA ON BOTTOM SIDE AS SHOWN ON SHEET 2.



<b>APPROVALS</b>		 <b>ANALOG DEVICES</b>		 <b>POWER BY LINEAR™</b>	
PCB DES	NC	<b>FOR ADI CUSTOMER USE ONLY</b>			
APP ENG	MM				
		<b>TITLE: TOP ASSEMBLY DRAWING</b> <b>5V, 3A SYNCHRONOUS STEP-DOWN</b> <b>SILENT SWITCHER</b>			
		SIZE	IC NO.	LTC3307	REV.
		N/A		DEMO CIRCUIT 2990A	02
SCALE = NONE					SHT 1 OF 1



APPROVALS		  POWER BY <b>LINEAR</b> <sup>TM</sup> FOR ADI CUSTOMER USE ONLY	
PCB DES.	NC	TITLE: BOTTOM ASSEMBLY DRAWING <b>5V, 3A SYNCHRONOUS STEP-DOWN            SILENT SWITCHER</b>	
APP ENG.	MM		
SCALE = NONE		SIZE N/A           IC NO. LTC3307 DEMO CIRCUIT 2990A	REV 02
		SHT 2 of 2	