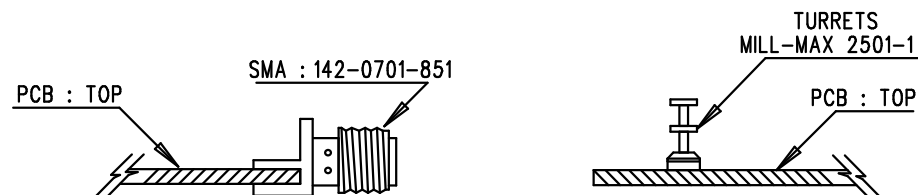



TOP SILKSCREEN

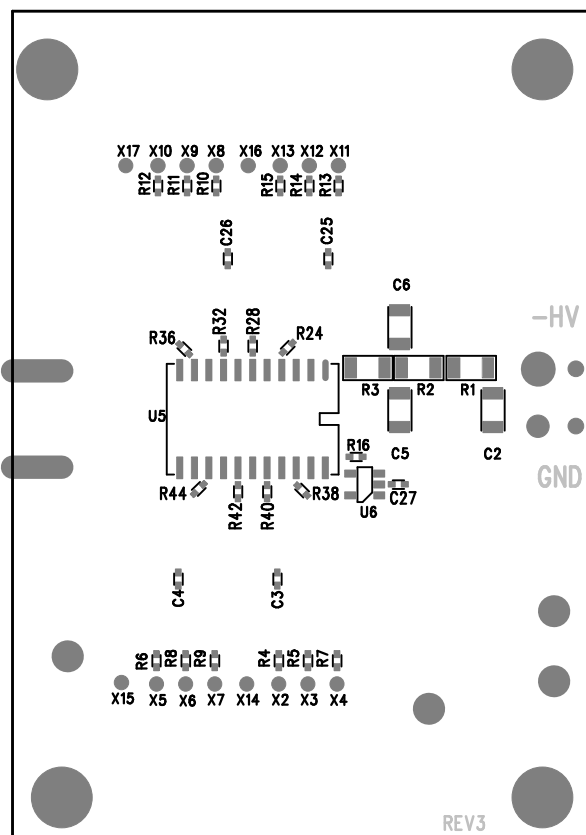
ANALOG DEVICES 11-21-2018  
DC2900A-3, LTC6561  
16:1 OPTICAL EVALUATION BOARD

## NOTES: UNLESS OTHERWISE SPECIFIED


1. WORKMANSHIP SHALL BE IN ACCORDANCE WITH IPC-A-610.
2. ASSEMBLY PROCESS SHALL INCLUDE: REFLOW SOLDER TOP SIDE SMD. MAXIMUM SOLDER TEMPERATURE IS 240 DEGREES CELSIUS.
3. PARTS TO OMIT WILL BE SPECIFIED ON THE BILL OF MATERIALS. LOCATIONS OF OMITTED PARTS SHALL BE FREE OF SOLDER. MASK THE SOLDER STENCIL WHERE SMT PARTS ARE OMITTED.
4. NO SHUNT.
5. DEPANELIZE BOARDS AFTER ASSEMBLY AND ROUTE-OUT THE BREAKOUT TABS ON FOUR SIDES OF THE BOARD EDGE.
6. DO NOT APPLY ANY KIND OF ASSEMBLY STAMP OR QA STAMP TO ANY BOARD.
7. INSTALL SMA CONNECTORS AND TURRETS AS SHOWN BELOW:



APPROVALS		 <b>ANALOG DEVICES</b> 1630 MCCARTHY BLVD MILPITAS, CA 95035 PH: (408)432-1900 www.analog.com ADI CONFIDENTIAL - FOR CUSTOMER USE ONLY		
PCB DES.	AK.	AHEAD OF WHAT'S POSSIBLE™		
APP ENG.	NOE Q.	TITLE: TOP ASSEMBLY DRAWING		
		16:1 OPTICAL EVALUATION BOARD		
		SIZE N/A	IC NO. LTC6561UF DC2900A	REV. 3
SCALE = NONE		FILENAME: DC2900A-2.PCB		SHT 1 OF 1



BOTTOM SILKSCREEN  
 ANALOG DEVICES 11-21-2018  
 DC2900A-1, LTC6561  
 16:1 OPTICAL EVALUATION BOARD

APPROVALS		 <b>ANALOG DEVICES</b> 1630 MCCARTHY BLVD MILPITAS, CA 95035 PH: (408)432-1900 <a href="http://www.analog.com">www.analog.com</a> ADI CONFIDENTIAL- FOR CUSTOMER USE ONLY		
PCB DES.	AK			
APP ENG.	NOE O.	AHEAD OF WHAT'S POSSIBLE™ <b>TITLE: BOTTOM ASSEMBLY DRAWING</b> <b>16:1 OPTICAL EVALUATION BOARD</b>		
		SIZE	IC NO.	REV
		N/A	LTC6561 DC2900A	3
SCALE = NONE		FILENAME: DC2900A-1.PCB		SHT 2 of 2