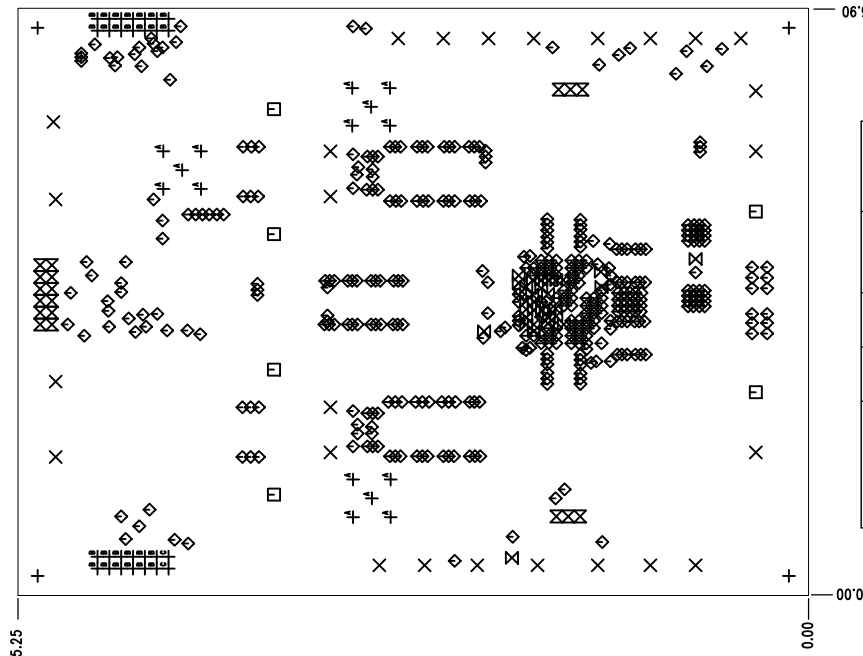
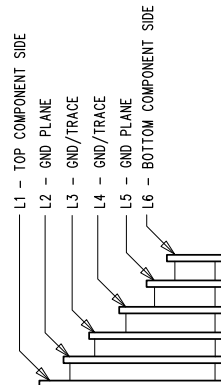


REVISION HISTORY				
ECO	REV	DESCRIPTION	APP. ENG.	DATE
-	1	PRODUCTION	Xuebing C.	10-4-18

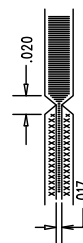


## LAYER STRUCTURE



## NOTES: UNLESS OTHERWISE SPECIFIED

1. FAB PER IPC-A-600.
2. MATERIAL: LEAD FREE ASSEMBLY COMPLIANT, ISOLA FR-370HR OR EQUIVALENT.
  - FINISHED THICKNESS TO BE 0.062 +/- .005
  - TOTAL OF 6 LAYERS WITH 2 OZ. CU ON ALL THE LAYERS
  - FLAMMABILITY RATING: 94 V-0 MINIMUM.
3. SIZE: CUT TO DIMENSIONS AND TOLERANCES SHOWN.  
0.00 ARE PRIMARY DATUMS.
4. DRILLING: -DRILL HOLES PER SCHEDULE. PLATE THROUGH HOLES WITH COPPER 0.001 THICK MIN.
  - ALL HOLE SIZES ARE SPECIFIED AFTER PLATING.
  - HOLE LOCATION TOLERANCES ARE +/-0.003 IN RELATION TO CENTER
5. FINISH: -SN0BC USING LPI BOTH SIDES, COLOR GREEN.
  - GOLD IMMERSION BOTH SIDES.
  - FOR SILKSCREENS: USE WHITE NON-CONDUCTIVE INK.
6. DO NOT ALTER ARTWORK e.g. TO ADD LOGO OR DATE CODE.
7. DESIGN HAS SOLDER MASK DEFINED PADS ON U1.  
U1 SOLDER MASK SIZE IS 0.025 INCH AND PAD SIZE IS 0.029 INCH.  
DON'T CHANGE PAD SIZE OR SOLDER MASK SIZE.
8. PCBs ARE TO BE RoHS COMPLIANT.
9. SCORING FOR PANELIZED PCB:



SIZE	QTY	SYM	PLATED	TOL
0.187	4	+	NO	+/-0.003
0.067	26	×	YES	+/-0.003
0.189	6	□	YES	+/-0.003
0.01	395	◇	YES	+/-0.003
0.008	31	⊠	YES	+/-0.003
0.035	18	⊠	YES	+/-0.003
0.055	15	† <sup>A</sup>	YES	+/-0.003
0.037	26	† <sup>B</sup>	YES	+/-0.003
0.0315	2	† <sup>C</sup>	YES	+/-0.003

UNLESS OTHERWISE SPECIFIED  
DIMENSIONS ARE IN INCHES  
TOLERANCES:  
0.XX =  $\pm 0.01$   
0.XXX =  $\pm 0.005$   
INTERPRET DIM AND TOL  
PER ASME Y14.5M-1994  
THIRD ANGLE PROJECTION

APPROVALS	
PCB DES.	HZ
APP ENG.	Xuebing C.
SCALE = NONE	

**ANALOG  
DEVICES** |  **POWER BY  
LINEAR™**  
1630 MCCARTHY BLVD  
MILPITAS, CA 95035  
PH: (408)432-1900  
[www.analog.com](http://www.analog.com)  
FOR AN CUSTOMER USE ONLY

TITLE: FABRICATION DRAWING		REV
DUAL 30A OUTPUT STEP-DOWN MODULE REGULATOR WITH DIGITAL POWER MANAGEMENT		1
SIZE	IC NO. LTM4680EY	
N/A	DEMO CIRCUIT 2844A	

FILENAME:	DC2844A-1.PCB	SHT 1 OF 1
-----------	---------------	------------