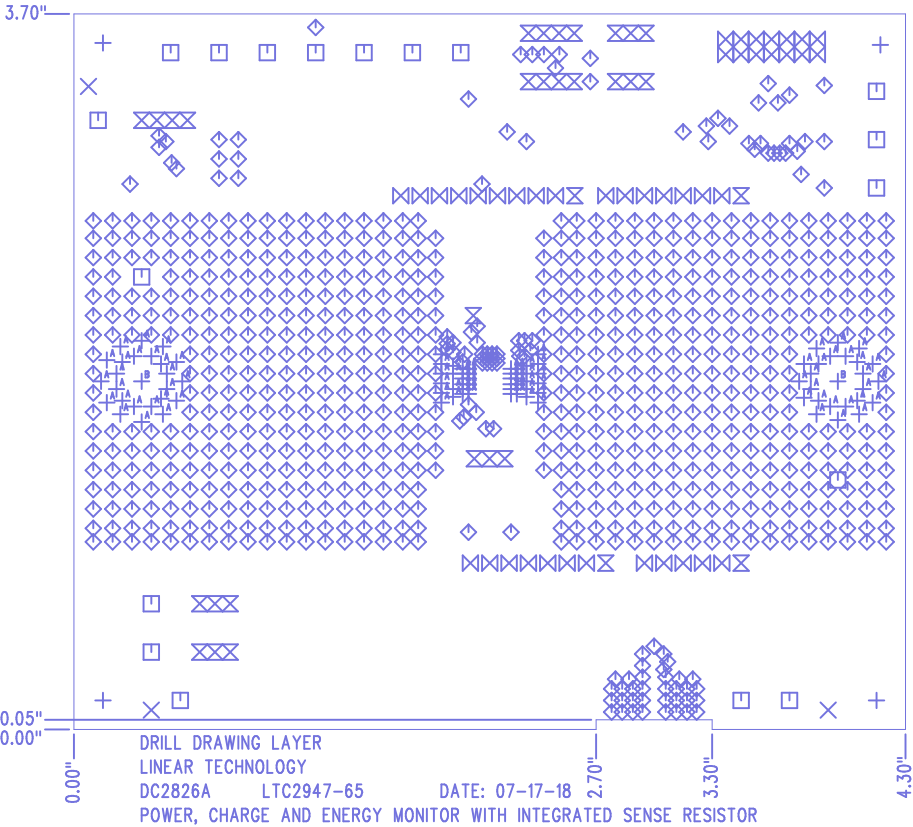


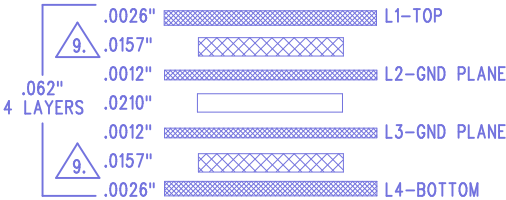
REVISION HISTORY				
ECO	REV	DESCRIPTION	APP. ENG.	DATE
-	1	PRODUCTION	PATRICK W.	07-17-18

SHOWN FROM TOP SIDE



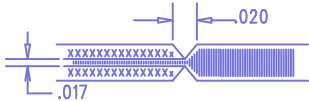
SIZE	QTY	SYM	PLATED	TOL
0.19	4	+	NO	+/-0.003"
0.07	3	X	NO	+/-0.003"
0.064	18	□	YES	+/-0.003"
0.012	760	◇	YES	+/-0.003"
0.035	32	⊗	YES	+/-0.003"
0.04	42	⊗	YES	+/-0.003"
0.008	93	+ <sup>A</sup>	YES	+/-0.003"
0.189	2	+ <sup>B</sup>	YES	+/-0.003"

LAYER STRUCTURE


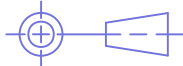


NOTES: UNLESS OTHERWISE SPECIFIED

- FAB PER IPC-A-600.
- MATERIAL: -LEAD FREE ASSEMBLY COMPLIANT, ISOLA FR-370HR OR EQUIVALENT.  
-FINISHED THICKNESS TO BE 0.062" +/- .005"  
-TOTAL OF 4 LAYERS WITH 2 OZ. CU ON THE OUTER LAYERS AND 1 OZ. CU ON THE INNER LAYERS.  
-FLAMMABILITY RATING: 94 V-0 MINIMUM.
- SIZE: CUT TO DIMENSIONS AND TOLERANCES SHOWN.  
0.00" ARE PRIMARY DATUMS.
- DRILLING: -DRILL HOLES PER SCHEDULE. PLATE THROUGH HOLES WITH COPPER, 0.001" THICK MIN.  
-ALL HOLE SIZES ARE SPECIFIED AFTER PLATING.  
-HOLE LOCATION TOLERANCES ARE +/-0.003" IN RELATION TO CENTER
- FINISH: -SMOBC USING LPI BOTH SIDES, COLOR GREEN.  
-GOLD IMMERSION BOTH SIDES.  
-FOR SILKSCREENS: USE WHITE NON-CONDUCTIVE INK.
- DO NOT ALTER ARTWORK e.g. TO ADD LOGO OR DATE CODE. PAD SIZE CAN BE MODIFIED TO MEET END FINISH.
- PCBS ARE TO BE RoHS COMPLIANT.
- SCORING FOR PANELIZED PCB (PRODUCTION FAB ONLY):



9. SUBJECT TO CHANGE BY MANUFACTURER, DEPENDING ON DIELECTRIC CONSTANT DEVIATIONS. PLEASE CONSULT LTC.

UNLESS OTHERWISE SPECIFIED		APPROVALS		<div>  <div> 1630 MCCARTHY BLVD MILPITAS, CA 95035 PH: (408)432-1900 www.linear.com LTC CONFIDENTIAL- FOR CUSTOMER USE ONLY </div> </div>	
DIMENSIONS ARE IN INCHES TOLERANCES: 0.XX" = ±0.01" 0.XXX" = ±0.005" INTERPRET DIM AND TOL PER ASME Y14.5M-1994 THIRD ANGLE PROJECTION		PCB DES.	SEAN M.		
		APP ENG.	PATRICK W.		
		TITLE: FABRICATION DRAWING POWER, CHARGE AND ENERGY MONITOR WITH INTEGRATED SENSE RESISTOR		SIZE	IC NO.
		SCALE = NONE		N/A	LTC2947-65
		FILENAME: DC2826A.PCB		REV 1	
				SHT 1 OF 1	