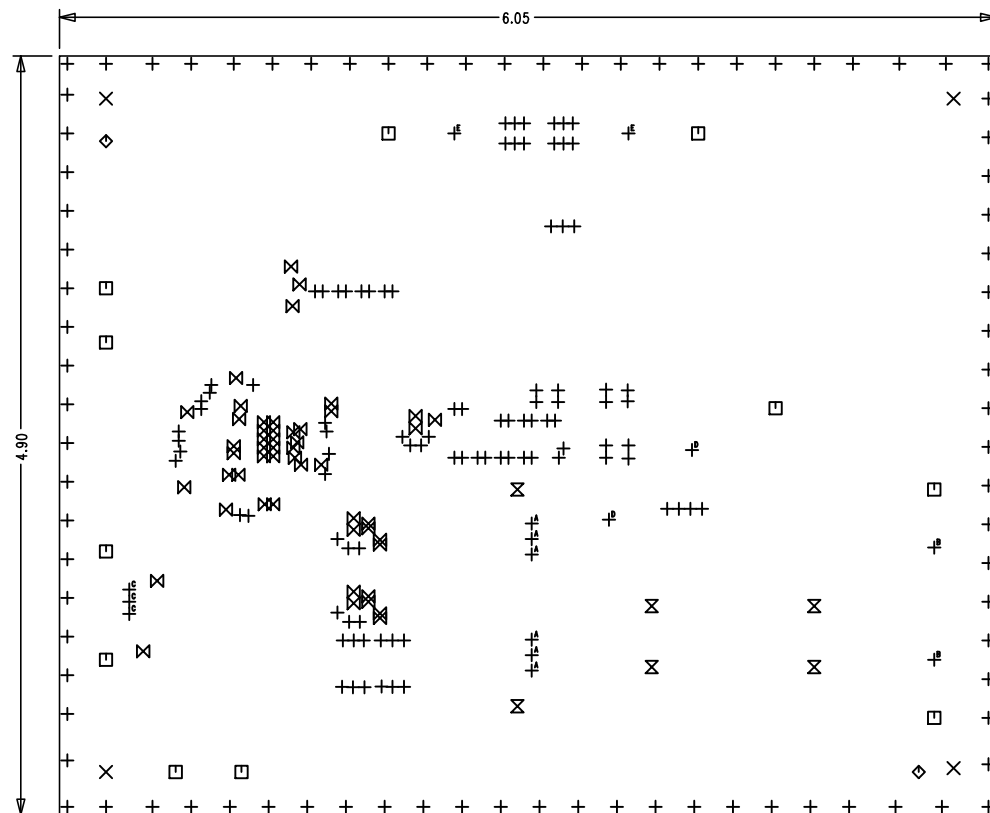
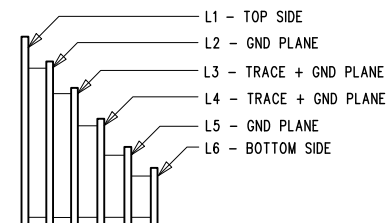


REVISION HISTORY				
ECO	REV	DESCRIPTION	APP. ENG.	DATE
-	2	PRODUCTION	GP	04-25-18

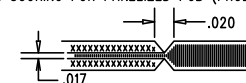


## LAYER STRUCTURE



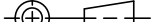


## NOTES: UNLESS OTHERWISE SPECIFIED

- FAB PER IPC-A-600.
- MATERIAL: -LEAD FREE ASSEMBLY COMPLIANT, ISOLA FR-370HR OR EQUIVALENT.  
-FINISHED THICKNESS TO BE 0.062 +/- .005  
-TOTAL OF 6 LAYERS WITH 2 OZ. CU ON THE OUTER LAYERS AND 1 OZ. CU ON THE INNER LAYERS.  
-FLAMMABILITY RATING: 94 V-0 MINIMUM.
- SIZE: CUT TO DIMENSIONS AND TOLERANCES SHOWN.  
0.00 ARE PRIMARY DATUMS.
- DRILLING: -DRILL HOLES PER SCHEDULE. PLATE THROUGH HOLES WITH COPPER, 0.001" THICK MIN.  
-ALL HOLE SIZES ARE SPECIFIED AFTER PLATING.  
-HOLE LOCATION TOLERANCES ARE +/-0.003 IN RELATION TO CENTER
- FINISH: -SMOBC USING LPI BOTH SIDES, COLOR GREEN.  
-GOLD IMMERSION BOTH SIDES.  
-FOR SILKSCREENS: USE WHITE NON-CONDUCTIVE INK.
- DO NOT ALTER ARTWORK e.g. TO ADD LOGO OR DATE CODE.  
PAD SIZE CAN BE MODIFIED TO MEET END FINISH.
- PCBS ARE TO BE RoHS COMPLIANT.
- SCORING FOR PANELIZED PCB (PRODUCTION FAB ONLY):



SIZE	QTY	SYM	PLATED	TOL
0.015	51	⊗	YES	+/-0.003
0.025	178	+	YES	+/-0.003
0.035	3	+ <sup>C</sup>	YES	+/-0.003
0.041	6	+ <sup>A</sup>	YES	+/-0.003
0.044	2	+ <sup>D</sup>	YES	+/-0.003
0.07	2	◇	NO	+/-0.003
0.079	6	⊗	YES	+/-0.003
0.095	11	□	YES	+/-0.003
0.187	4	⊗	NO	+/-0.003
0.189	2	+ <sup>E</sup>	YES	+/-0.003
0.205	2	+ <sup>B</sup>	YES	+/-0.003

UNLESS OTHERWISE SPECIFIED		APPROVALS		  POWER BY LINEAR™ www.analog.com FOR ADI CUSTOMER USE ONLY		
DIMENSIONS ARE IN INCHES TOLERANCES: 0.XX = ± 0.01 0.XXX = ± 0.005 INTERPRET DIM AND TOL PER ASME Y14.5M-1994 THIRD ANGLE PROJECTION						
PCB DES.		LT		TITLE: FABRICATION DRAWING HIGH OUTPUT VOLTAGE BOOST CONVERTER		
APP ENG.		GP				
				SIZE N/A	IC NO. LTC7840EFE DEMO CIRCUIT 2744A	REV 2
SCALE = NONE		FILENAME: DC2744A-2.PCB				SHT 1 OF 1