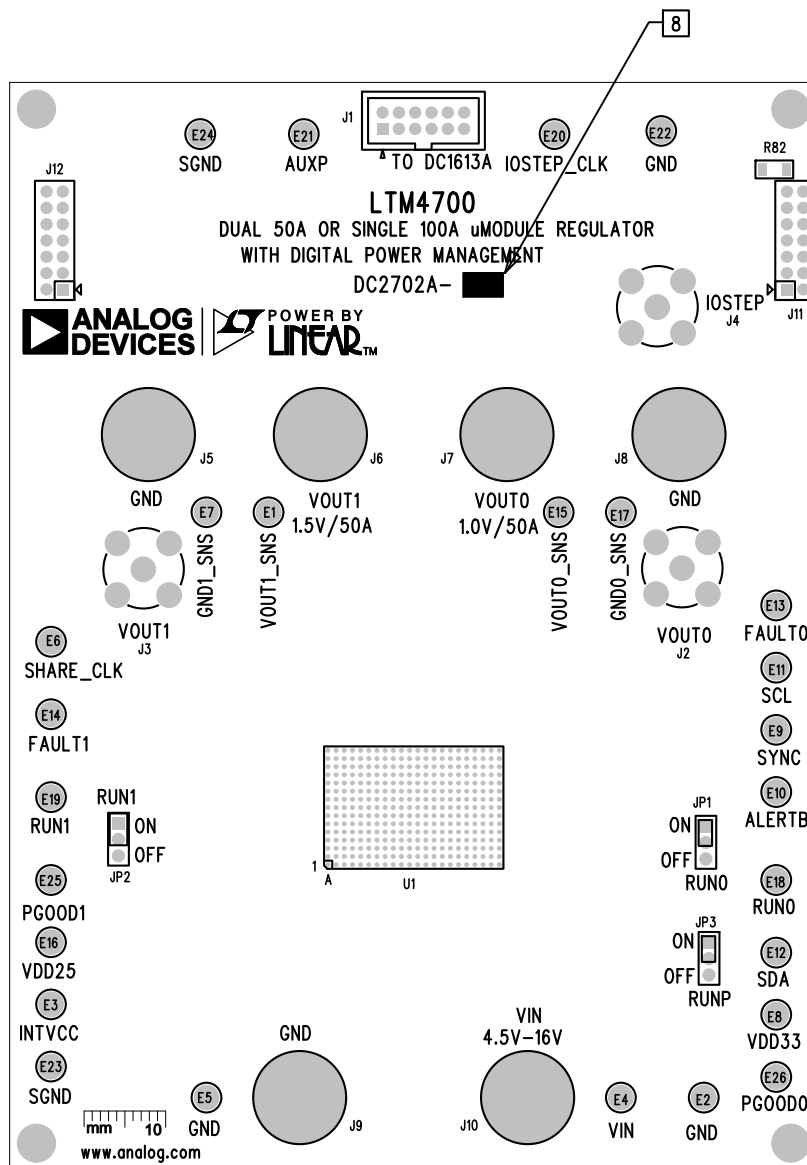
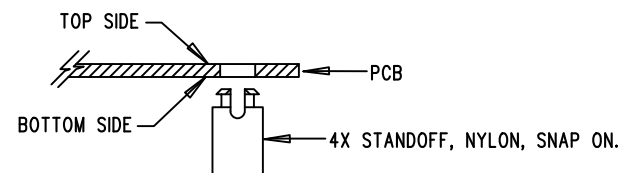


REVISION HISTORY				
ECO	REV	DESCRIPTION	APP. ENG.	DATE
-	5	PRODUCTION	HZ	08-29-18





NOTES: UNLESS OTHERWISE SPECIFIED

1. WORKMANSHIP SHALL BE IN ACCORDANCE WITH IPC-A-610.
2. ASSEMBLY PROCESS SHALL INCLUDE: REFLOW SOLDER TOP SIDE SMD. MAXIMUM SOLDER TEMPERATURE IS 240 DEGREES CELSIUS.
3. PARTS TO OMIT WILL BE SPECIFIED ON THE BILL OF MATERIALS. LOCATIONS OF OMITTED PARTS SHALL BE FREE OF SOLDER. MASK THE SOLDER STENCIL WHERE SMT PARTS ARE OMITTED.
4. INSTALL SHUNTS AS SHOWN ON ASSY DRAWING.
5. DEPANELIZE BOARDS AFTER ASSEMBLY AND ROUTE-OUT THE BREAKOUT TABS ON FOUR SIDES OF THE BOARD EDGE.
6. DO NOT APPLY ANY KIND OF ASSEMBLY STAMP OR QA STAMP TO ANY BOARD.
7. INSTALL 4 STANDOFFS AS SHOWN BELOW:



8. SEE THE BILL OF MATERIALS TO MARK THE APPROPRIATE ASSEMBLY TYPE WITH BLACK PERMANENT MARKER.

APPROVALS		  www.linear.com FOR ADI CUSTOMER USE ONLY		
PCB DES.	LT	TITLE: TOP ASSEMBLY DRAWING DUAL 50A OR SINGLE 100A uMODULE REGULATOR WITH DIGITAL POWER MANAGEMENT		
APP ENG.	HZ			
		SIZE	IC NO. LTM4700EY	REV. 5
		N/A	DC2702A(A,B)	
SCALE = NONE		FILENAME: DC2702A-5.PCB		SHT 1 OF 2