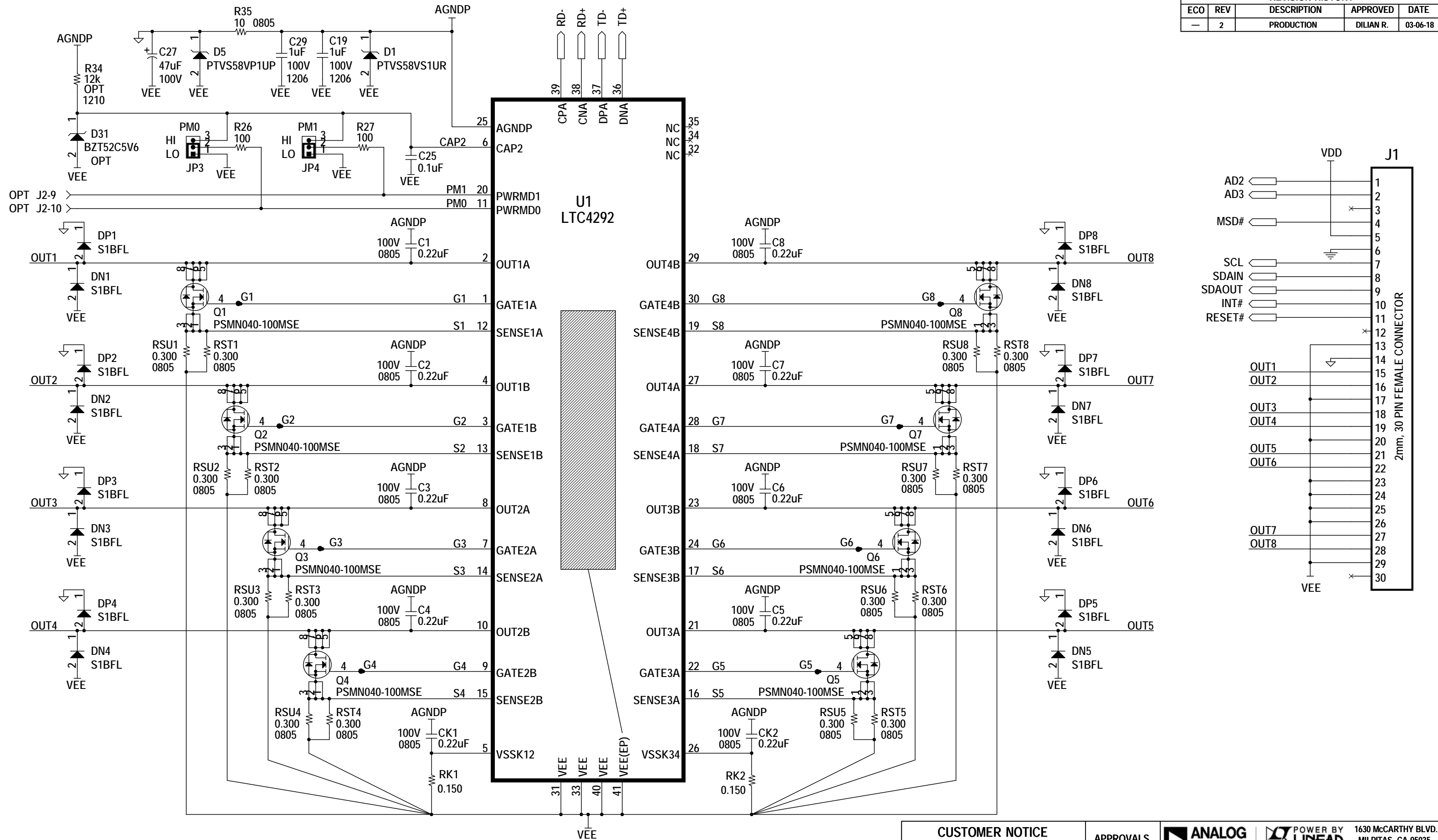


REVISION HISTORY				
ECO	REV	DESCRIPTION	APPROVED	DATE
—	2	PRODUCTION	DILIAN R.	03-06-18



NOTE: UNLESS OTHERWISE SPECIFIED

1. ALL RESISTORS AND CAPACITORS ARE 0603.
2. RST1-RST4, RSU1-RSU4, AND RK1 CONNECT TO VEE AT ONE COMMON POINT.
3. RST5-RST8, RSU5-RSU8, AND RK2 CONNECT TO VEE AT ONE COMMON POINT.

CUSTOMER NOTICE		APPROVALS		ANALOG DEVICES		POWER BY LINEAR		1630 MCCARTHY BLVD. MILPITAS, CA 95035 TEL: (408) 432-1900	
ADI HAS MADE A BEST EFFORT TO DESIGN A CIRCUIT THAT MEETS CUSTOMER-SUPPLIED SPECIFICATIONS; HOWEVER, IT REMAINS THE CUSTOMER'S RESPONSIBILITY TO VERIFY PROPER AND RELIABLE OPERATION IN THE ACTUAL APPLICATION. COMPONENT SUBSTITUTION AND PRINTED CIRCUIT BOARD LAYOUT MAY SIGNIFICANTLY AFFECT CIRCUIT PERFORMANCE OR RELIABILITY. CONTACT ADI APPLICATIONS ENGINEERING FOR ASSISTANCE.		PCB DES.	KIM T.	www.analog.com		www.linear.com		TITLE: SCHEMATIC	
		APP ENG.	DILIAN R.					IEEE 802.3bt 8-CHANNEL PSE DAUGHTER CARD	
								SIZE N/A IC NO. LTC4291IUF - LTC4292IUJ	
								DEMO CIRCUIT 2684A	
THIS CIRCUIT IS PROPRIETARY TO ADI AND SUPPLIED FOR USE WITH ADI PARTS.		SCALE = NONE		DATE: Tuesday, March 06, 2018		SHEET 1 OF 2		REV. 2	

