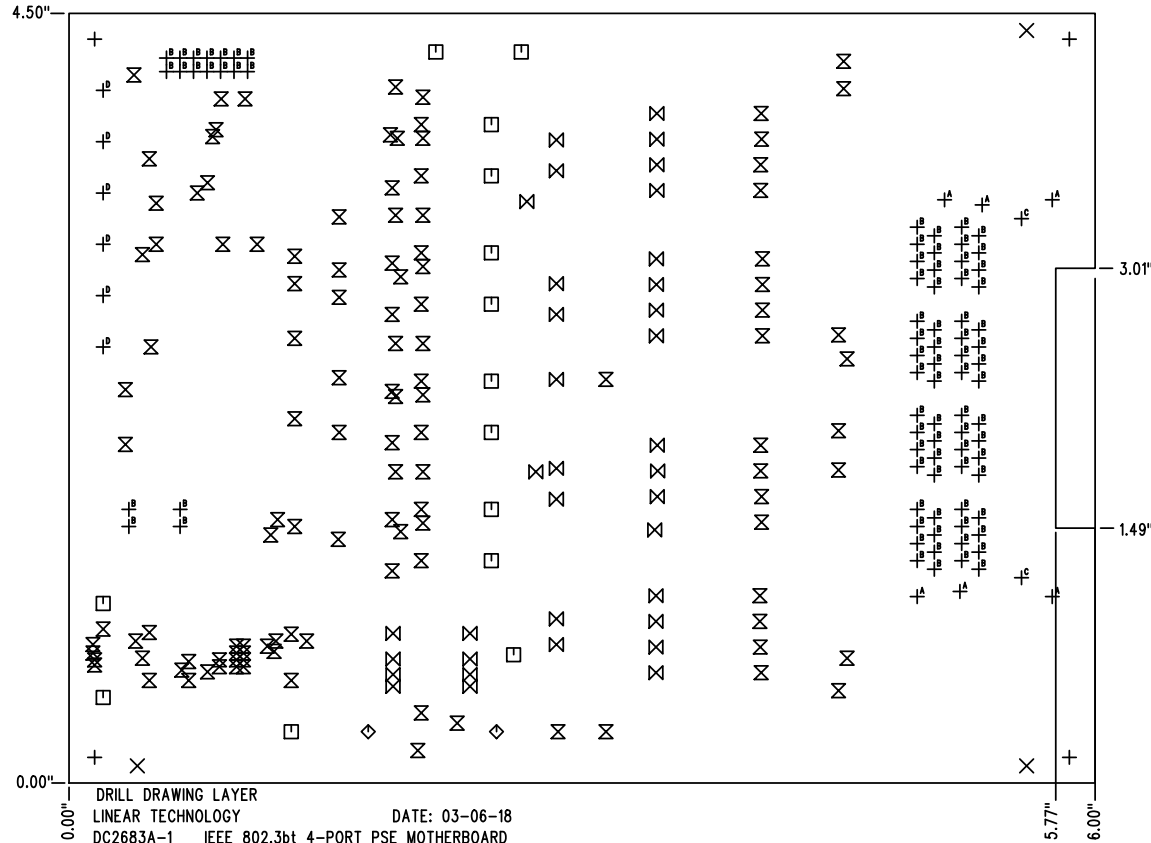
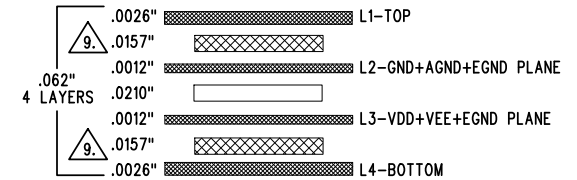


SHOWN FROM TOP SIDE

REVISION HISTORY				
ECO	REV	DESCRIPTION	APP. ENG.	DATE
-	1	PRODUCTION	DILIAN R.	03-06-18

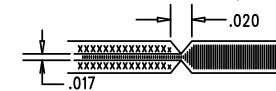


LAYER STRUCTURE



NOTES: UNLESS OTHERWISE SPECIFIED

- FAB PER IPC-A-600.
- MATERIAL: -LEAD FREE ASSEMBLY COMPLIANT, ISOLA FR-370HR OR EQUIVALENT.
-FINISHED THICKNESS TO BE 0.062" +/- .005"
-TOTAL OF 4 LAYERS WITH 2 OZ. CU ON THE OUTER LAYERS AND 1 OZ. CU ON THE INNER LAYERS.
-FLAMMABILITY RATING: 94 V-0 MINIMUM.
- SIZE: CUT TO DIMENSIONS AND TOLERANCES SHOWN.
0.00" ARE PRIMARY DATUMS.
- DRILLING: -DRILL HOLES PER SCHEDULE. PLATE THROUGH HOLES WITH COPPER, 0.001" THICK MIN.
-ALL HOLE SIZES ARE SPECIFIED AFTER PLATING.
-HOLE LOCATION TOLERANCES ARE +/-0.003" IN RELATION TO CENTER
- FINISH: -SMOBC USING LPI BOTH SIDES, COLOR GREEN.
-GOLD IMMERSION BOTH SIDES.
-FOR SILKSCREENS: USE WHITE NON-CONDUCTIVE INK.
- DO NOT ALTER ARTWORK e.g. TO ADD LOGO OR DATE CODE.
PAD SIZE CAN BE MODIFIED TO MEET END FINISH.
- PCBS ARE TO BE RoHS COMPLIANT.
- SCORING FOR PANELIZED PCB (PRODUCTION FAB ONLY):



9. SUBJECT TO CHANGE BY MANUFACTURER, DEPENDING ON DIELECTRIC CONSTANT DEVIATIONS. PLEASE CONSULT LTC.

SIZE	QTY	SYM	PLATED	TOL
0.187	4	+	NO	+/-0.003"
0.07	3	X	NO	+/-0.003"
0.094	14	□	YES	+/-0.003"
0.207	2	◇	YES	+/-0.003"
0.012	120	⊗	YES	+/-0.003"
0.035	35	⊗	YES	+/-0.003"
0.062	6	+ ^A	YES	+/-0.003"
0.04	82	+ ^B	YES	+/-0.003"
0.13	2	+ ^C	NO	+/-0.003"
0.063	6	+ ^D	YES	+/-0.003"

UNLESS OTHERWISE SPECIFIED DIMENSIONS ARE IN INCHES TOLERANCES: 0.XX" = ±0.01" 0.XXX" = ±0.005" INTERPRET DIM AND TOL PER ASME Y14.5M-1994 THIRD ANGLE PROJECTION		APPROVALS		ANALOG DEVICES www.analog.com		POWER BY LINEAR www.linear.com		1630 MCCARTHY BLVD. MILPITAS, CA 95035 TEL: (408)432-1900	
PCB DES.		KIM T.		APP ENG.		DILIAN R.		TITLE: FABRICATION DRAWING	
SCALE = NONE		SIZE N/A		IC NO.		DEMO CIRCUIT 2683A		REV 1	
FILENAME: DC2683A-1.PCB		SHT 1 OF 1							