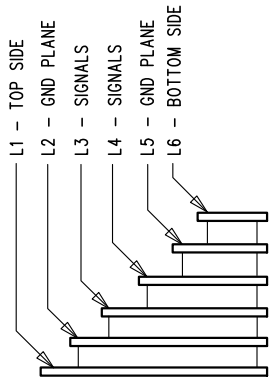


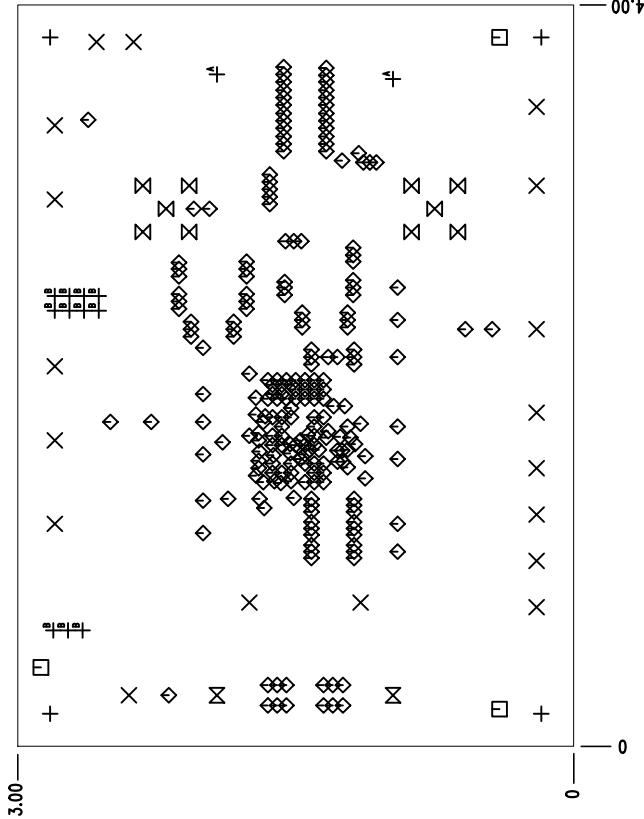
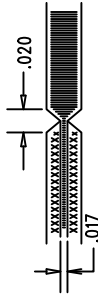
REVISION HISTORY			
ECO	REV	DESCRIPTION	APP. ENG.
-	1	PRODUCTION	YL
			02-27-17

LAYER STRUCTURE



NOTES: UNLESS OTHERWISE SPECIFIED

1. FAB PER IPC-A-600.
2. MATERIAL: -LEAD FREE ASSEMBLY COMPLIANT, ISOLA FR-370HR OR EQUIVALENT.
 - FINISHED THICKNESS TO BE 0.062 +/- .005
 - TOTAL OF 6 LAYERS WITH 2 OZ. CU ON ALL LAYERS
 - FLAMMABILITY RATING: 94 V-0 MINIMUM.
3. SIZE: CUT TO DIMENSIONS AND TOLERANCES SHOWN.
0/0 ARE PRIMARY DATUMS.
4. DRILLING: -DRILL HOLES PER SCHEDULE. PLATE THROUGH HOLES WITH COPPER, 0.001 THICK MIN.
 - ALL HOLE SIZES ARE SPECIFIED AFTER PLATING.
 - HOLE LOCATION TOLERANCES ARE +/-0.003 IN RELATION TO CENTER
5. FINISH: -SNOBC USING LPI BOTH SIDES, COLOR GREEN.
 - GOLD IMMERSION BOTH SIDES.
 - FOR SILKSCREENS: USE WHITE NON-CONDUCTIVE INK.
6. DO NOT ALTER ARTWORK e.g. TO ADD LOGO OR DATE CODE.
7. DESIGN HAS SOLDER MASK DEFINED PADS ON U1.
U1 SOLDER MASK SIZE IS 25 MIL AND PAD SIZE IS 29 MIL.
DON'T CHANGE PAD SIZE OR SOLDER MASK SIZE.
8. PCBs ARE TO BE RoHS COMPLIANT.
9. SCORING FOR PANELIZED PCB (PRODUCTION FAB ONLY):



SIZE	QTY	SYM	PLATED	TOL
0.01	228	◇	YES	+/-0.003
0.035	11	⊕ ^B	YES	+/-0.003
0.055	10	⊗	YES	+/-0.003
0.064	18	⊗	YES	+/-0.003
0.07	3	□	NO	+/-0.003
0.187	4	⊕	NO	+/-0.005
0.189	2	⊕ ^A	YES	+/-0.005
0.205	2	⊗	YES	+/-0.005

UNLESS OTHERWISE SPECIFIED
DIMENSIONS ARE IN INCHES
TOLERANCES:
XX = ±0.01
XXX = ±0.005
INTERPRET DIM AND TOL
PER ASME Y14.5M-1994
THIRD ANGLE PROJECTION

APPROVALS		TITLE: FABRICATION DRAWING	
PCB DES.	LT	SINGLE-OUTPUT, HIGH EFFICIENCY STEP-DOWN	
APP ENG.	YL	μMODULE REGULATOR	
SCALE = NONE		IC NO. LTM4645EY/LTM4647EY	
		DEMO CIRCUIT 2681A(A,B)	
		REV 1	
		SHT 1 OF 1	

1830 MCCARTHY BLVD
MILPITAS, CA 95035
PH: (408)432-1800
WWW.LINEARTECH.COM
LINEAR TECHNOLOGY
FOR CUSTOMER USE ONLY