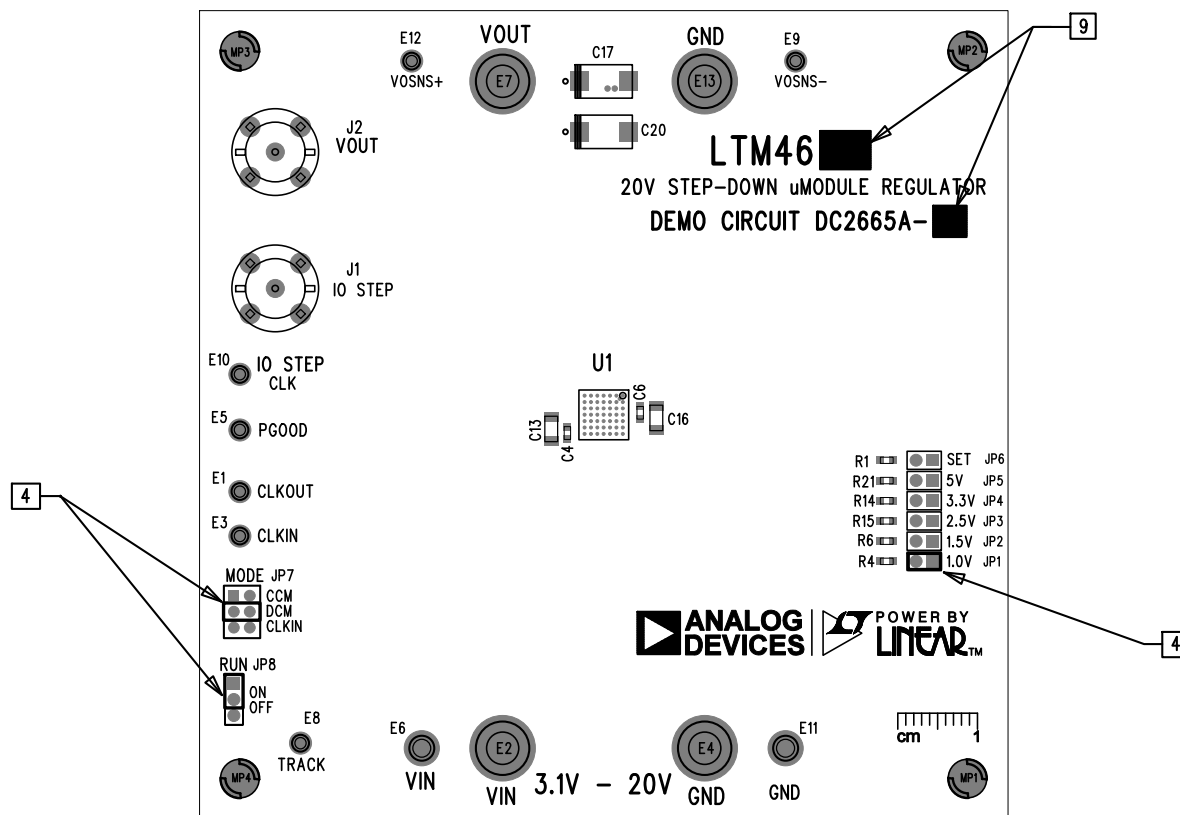


REVISION HISTORY				
ECO	REV	DESCRIPTION	APPR	DATE
-				



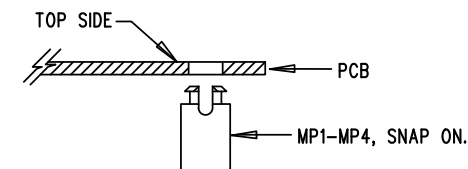
20V STEP-DOWN uMODULE REGULATOR DEMO CIRCUIT DC2665A
PCB# 600-DC2665A REV03

9. WRITE SKU# ASSEMBLY VARIANT LETTER AND LAST TWO DIGITS OF U1 DEVICE NAME WITH BLACK PERMANENT MARKER IN THE SILKSCREEN WINDOWS AS SHOWN IN TABLE BELOW:

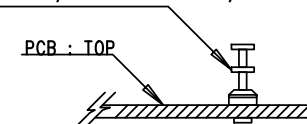
SKU#	U1 DEVICE NAME
DC2665A-[A]	LTM46[26]
DC2665A-[B]	LTM46[38]

NOTES: UNLESS OTHERWISE SPECIFIED

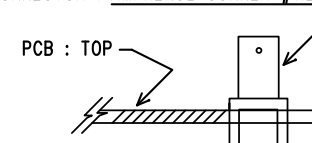
- WORKMANSHIP SHALL BE IN ACCORDANCE WITH IPC-A-610.
- ASSEMBLY PROCESS SHALL INCLUDE REFLOW SOLDER BOTH SIDES. MAXIMUM SOLDER TEMPERATURE SHALL BE <250 DEGREES CELSIUS.
- DEPANELIZE BOARDS AFTER ASSEMBLY AND ROUTE-OUT THE BREAKOUT TABS ON ALL BOARD EDGES.
- INSTALL SHUNTS AT JP1, JP7 AND JP8 IN POSITIONS AS SHOWN.
- LAND PATTERNS NOT STUFFED SHALL BE FREE OF SOLDER. MASK THE SOLDER STENCIL AT THESE LOCATIONS.
- INSTALL 4 STANDOFFS AT MP1-MP4 LOCATIONS AS SHOWN BELOW:



- INSTALL TURRETS AS SHOWN:
TURRETS : TYPICAL, MILL-MAX 2308-2, 2501-2

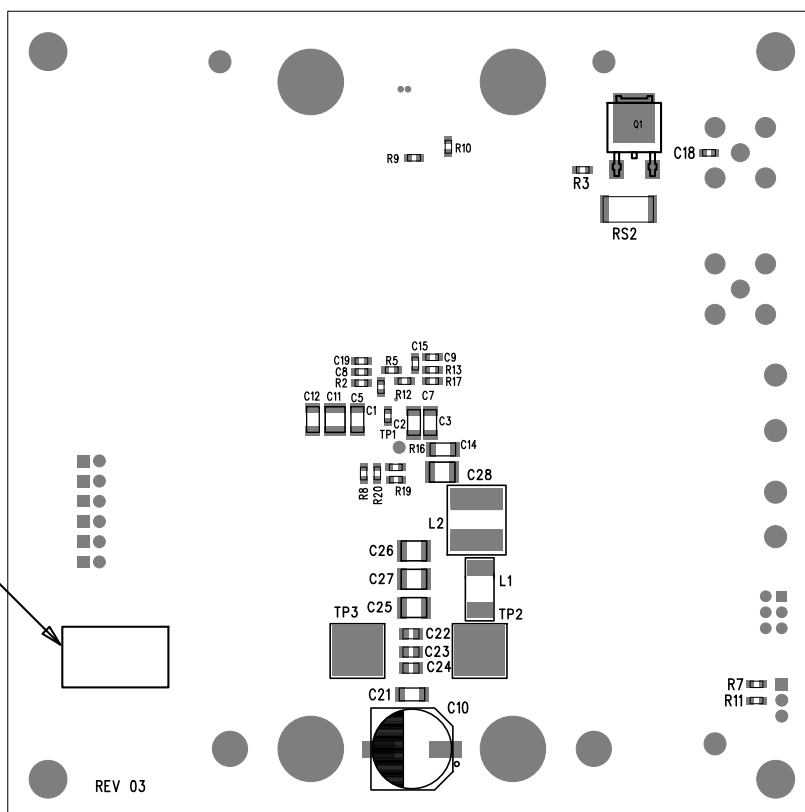


- INSTALL BNC JACKS J1,J2, AS SHOWN:
CONNECTOR : AMPHENOL CONNEX #112404





APPROVALS		ANALOG DEVICES POWER BY LINEAR™		
PCB DES.	M. HAWKINS	FOR ADI CUSTOMER USE ONLY		
APP ENG.	TIM KOZONO	TITLE: ASSEMBLY DRAWING, TOP		
		20V STEP-DOWN uMODULE REGULATOR		
		DEMO CIRCUIT DC2665A		
SCALE = NONE		SIZE	IC NO.	DWG. REV.
		N/A	LTM4626, LTM4638	03
FILENAME: 705-DC2665A_REV03_PCA_ASSY_DWG				SHT 1 OF 2

DEMO S/N LABEL ①
APPLY IN THIS AREA



NOTES: UNLESS OTHERWISE SPECIFIED
1. AFFIX DEMO S/N LABEL AT AREA SHOWN.

APPROVALS		 		
PCB DES.	M. HAWKINS	FOR ADI CUSTOMER USE ONLY		
APP ENG.	TIM KOZONO	TITLE: ASSEMBLY DRAWING, BOTTOM		
		20V STEP-DOWN uMODULE REGULATOR		
		DEMO CIRCUIT DC2665A		
SCALE = NONE		SIZE N/A	IC NO. LTM4626, LTM4638	DWG. REV. 03
FILENAME: 705-DC2665A_REV03_PCA_ASSY_DWG				SHT 2 OF 2