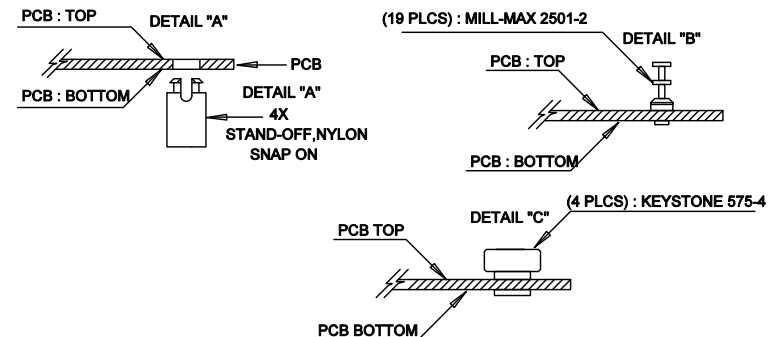


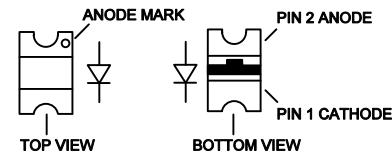
REVISION HISTORY				
ECO	REV	DESCRIPTION	APPR	DATE
-	04	PRODUCTION	ZP	01-18-18

NOTES: UNLESS OTHERWISE SPECIFIED

1. WORKMANSHIP SHALL BE IN ACCORDANCE WITH IPC-A-610, CLASS 2.
2. ASSEMBLY REFLOW PROFILE SHALL BE IN ACCORDANCE WITH J-STD-020 WITH MAXIMUM SOLDER TEMPERATURE OF 250 DEGREES CELSIUS.
3. PARTS TO OMIT WILL BE SPECIFIED ON THE BILL OF MATERIALS. LOCATIONS OF OMITTED PARTS SHALL BE FREE OF SOLDER. MASK THE SOLDER STENCIL WHERE SMT PARTS ARE OMITTED.
4. INSTALL SHUNTS AS SHOWN ON ASSY DRAWING.
5. DEPANELIZE BOARDS AFTER ASSEMBLY AND ROUTE-OUT THE BREAKOUT TABS ON FOUR SIDES OF THE BOARD EDGE.
6. APPLY ASSEMBLY STAMP OR QA STAMP TO BOTTOM OF BOARD (UNSHOWY AREA).
7. INSTALL TURRETS, STAND-OFFS AND BANANA JACKS AS SHOWN BELOW:



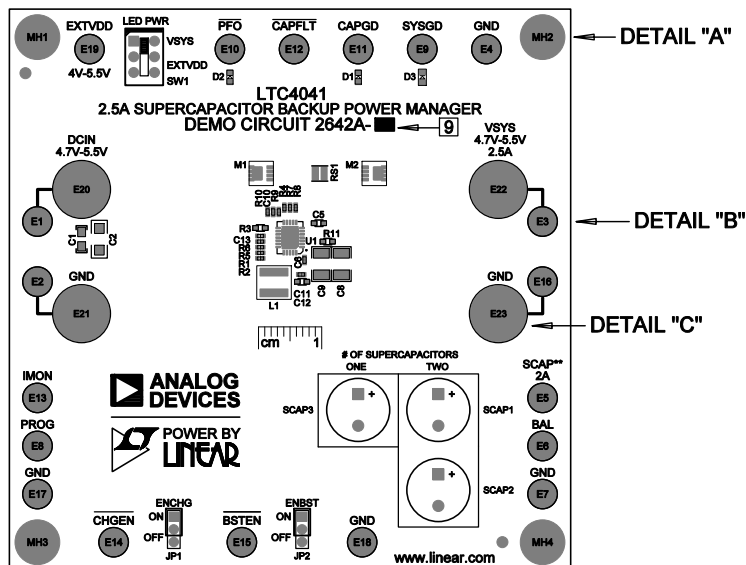
8. INSTALL LED'S D1, D2 AND D3 AS SHOWN:





9. THERE ARE TWO ASSEMBLY VERSIONS FOR THIS DESIGN: -A AND -B. PLEASE SEE BILL OF MATERIALS AND TABLE BELOW TO MARK EACH VERSION CORRECTLY BY BLACK PERMANENT MARKER.

* ASSEMBLY VERSION TABLE							
SKU NO.	SCAP1	SCAP2	SCAP3	R19	R20	R9	R10
-A	LOADED	LOADED	DNP	LOADED	DNP	1.5M	324k
-B	DNP	DNP	LOADED	DNP	LOADED	698k	348k

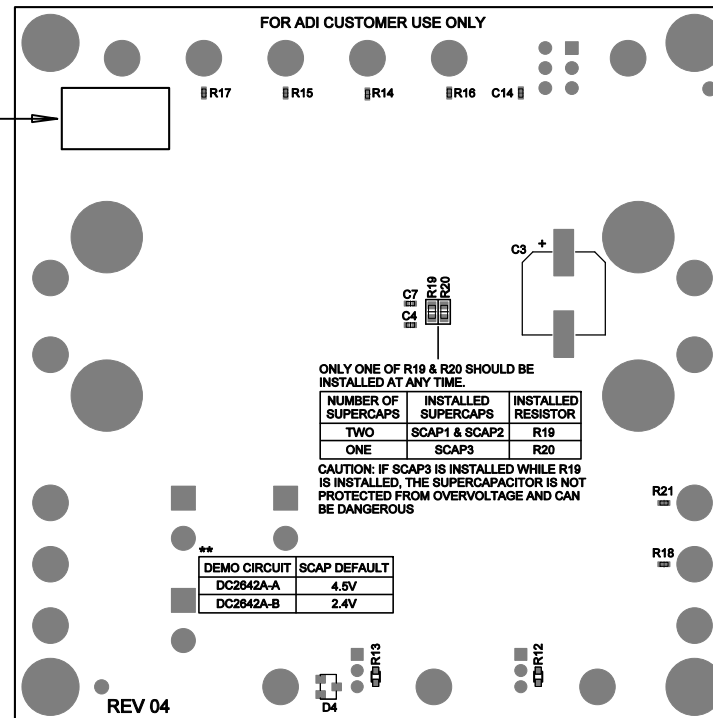
10. APPLY DEMO S/N AT AREA ON BOTTOM SIDE AS SHOWN ON SHEET 2.



APPROVALS		 ANALOG DEVICES		 POWER BY LINEAR		1630 MCCARTHY BLVD MILPITAS, CA 95035 PH: (408)432-1900 WWW.ANALOG.COM	
PCB DES.	NC	TITLE: TOP ASSEMBLY DRAWING: 2.5A SUPERCAPACITOR BACKUP POWER MANAGER					
APP ENG.	ZP						
		SIZE IC NO. LTC4041 REV N/A DEMO CIRCUIT 2642A-A,B 04					
SCALE = NONE		FILENAME:				SHT 1 of 2	

APPLY IN THIS AREA
DEMO S/N LABEL

10



APPROVALS

PCB DES. NC

APP ENG. ZP



1630 MCCARTHY BLVD
MILPITAS, CA 95035
PH: (408)432-1800
WWW.ANALOG.COM

TITLE: BOTTOM ASSEMBLY DRAWING

2.5A SUPERCAPACITOR BACKUP POWER MANAGER

SIZE N/A IC NO. LTC4041

DEMO CIRCUIT 2642A-A,B

REV 04

SCALE = NONE

FILENAME:

SHT 2 of 2