



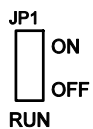
PLLIN



PGOOD



RUN



ON

OFF

LTC7801

HIGH VOLTAGE DC-DC
BUCK REGULATOR
DEMO CIRCUIT 2641A



VIN



100% DUTY



ON

OFF

JP5

JP3



MODE



FCM

P.S.

BURST ADJ.

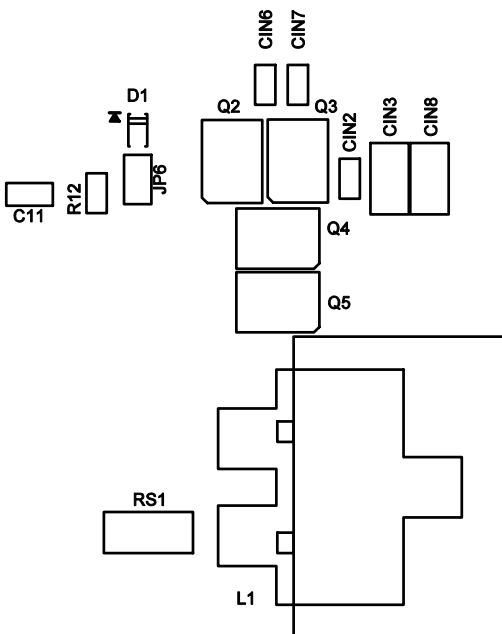
BURST DEFAULT

JP4

MODE



SS



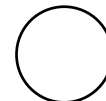
VIN
16V - 100V



J1

CIN1

GND



J2

VIN-



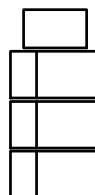
LINEAR
TECHNOLOGY
www.linear.com
(408) 432-1900

VOUT
12V, 10A

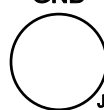


J3

COUT1
COUT3
COUT2
COUT4



GND



GND

EXTVCC

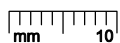


JP7

VBIAS
ON
OFF



JP2



FOR LTC CUSTOMER USE ONLY