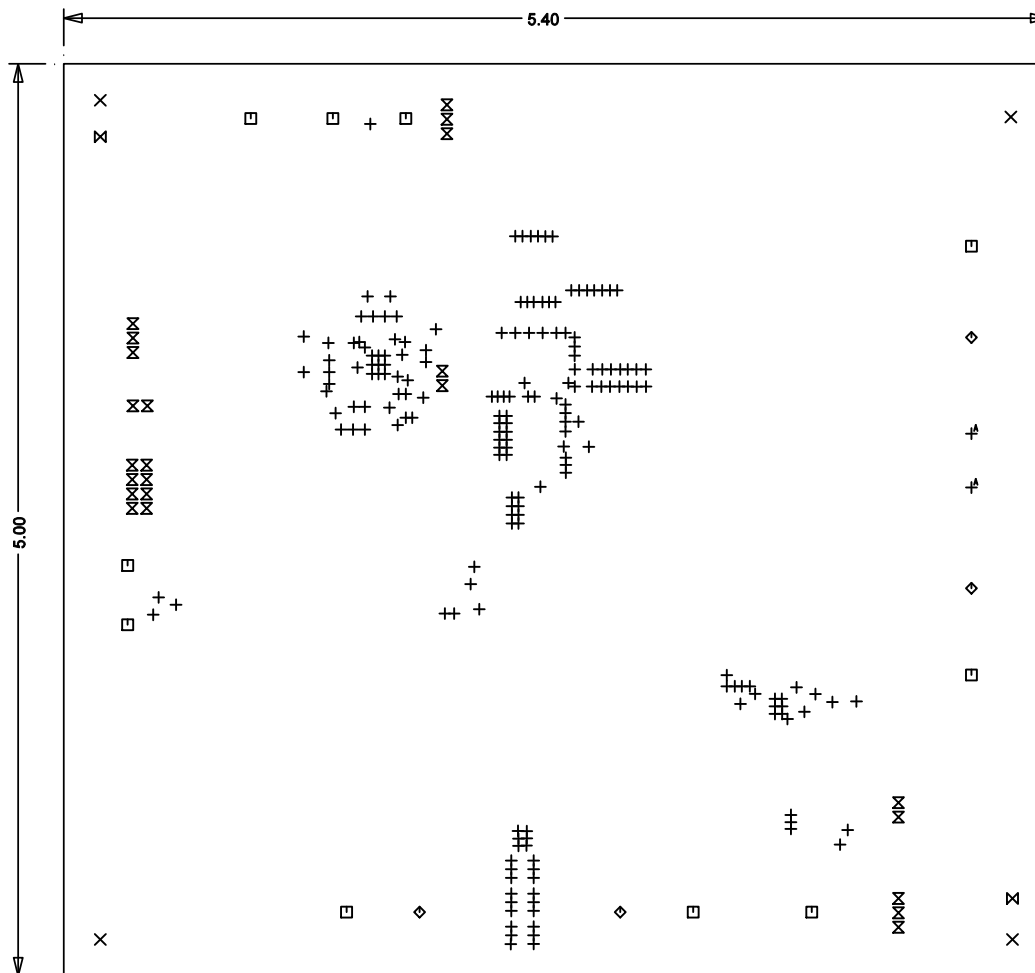
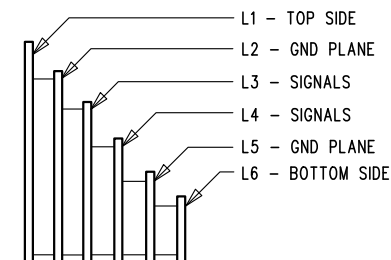


REVISION HISTORY				
ECO	REV	DESCRIPTION	APP. ENG.	DATE
-	3	PRODUCTION	DING L.	04-10-17

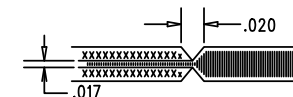


LAYER STRUCTURE




NOTES: UNLESS OTHERWISE SPECIFIED

- FAB PER IPC-A-600.
- MATERIAL: -LEAD FREE ASSEMBLY COMPLIANT, ISOLA FR-370HR OR EQUIVALENT.
-FINISHED THICKNESS TO BE 0.062 +/- .005
-TOTAL OF 6 LAYERS WITH 2 OZ. CU ON THE OUTER LAYERS AND 1 OZ. CU ON THE INNER LAYERS.
-FLAMMABILITY RATING: 94 V-0 MINIMUM.
- SIZE: CUT TO DIMENSIONS AND TOLERANCES SHOWN.
O/O ARE PRIMARY DATUMS.
- DRILLING: -DRILL HOLES PER SCHEDULE. PLATE THROUGH HOLES WITH COPPER, 0.001 THICK MIN.
-ALL HOLE SIZES ARE SPECIFIED AFTER PLATING.
-HOLE LOCATION TOLERANCES ARE +/-0.003 IN RELATION TO CENTER
- FINISH: -SMOBC USING LPI BOTH SIDES, COLOR GREEN.
-GOLD IMMERSION BOTH SIDES.
-FOR SILKSCREENS: USE WHITE NON-CONDUCTIVE INK.
- DO NOT ALTER ARTWORK e.g. TO ADD LOGO OR DATE CODE.
PAD SIZE CAN BE MODIFIED TO MEET END FINISH.
- PCBS ARE TO BE RoHS COMPLIANT.
- SCORING FOR PANELIZED PCB:



SIZE	QTY	SYM	PLATED	TOL
0.01	188	+	YES	+/-0.003
0.035	23	X	YES	+/-0.003
0.045	2	+	YES	+/-0.003
0.07	2	X	NO	+/-0.003
0.095	10	X	YES	+/-0.003
0.187	4	X	NO	+/-0.005
0.205	4	X	YES	+/-0.005

UNLESS OTHERWISE SPECIFIED		APPROVALS		 1630 MCCARTHY BLVD MILPITAS, CA 95035 PH: (408)432-1900 www.linear.com LTC CONFIDENTIAL- FOR CUSTOMER USE ONLY	
DIMENSIONS ARE IN INCHES		PCB DES.	LT		
TOLERANCES:		APP ENG.	DING L.	TITLE: FABRICATION DRAWING	
0.XX = ± 0.01				HIGH VOLTAGE DC-DC BUCK REGULATOR	
0.XXX = ± 0.005					
INTERPRET DIM AND TOL				SIZE	IC NO. LTC7801UFD
PER ASME Y14.5M-1994				N/A	DEMO CIRCUIT 2641A
THIRD ANGLE PROJECTION					REV
					3
		SCALE = NONE		FILENAME: DC2641A-3.PCB	SHT 1 OF 1