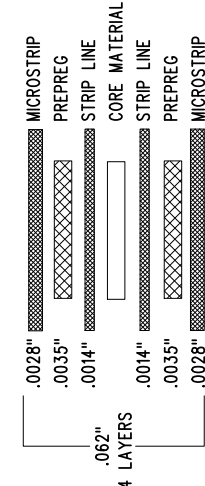
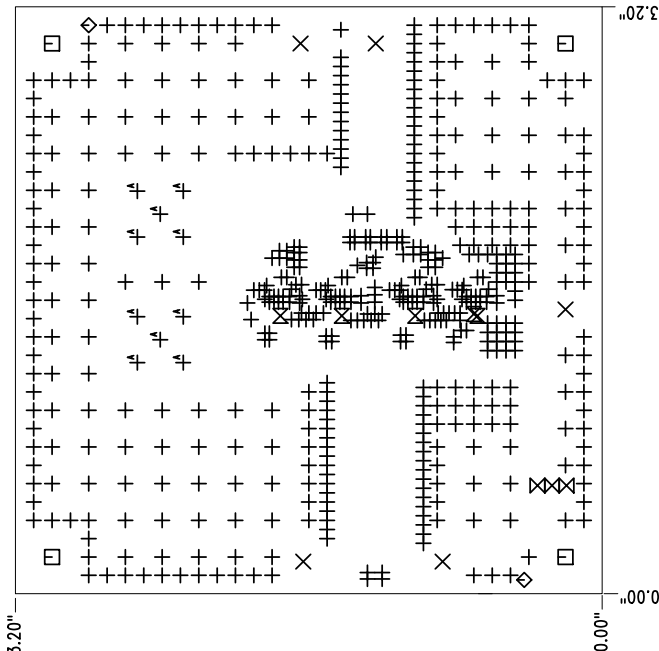
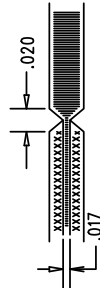


LAYER STRUCTURE



NOTES: UNLESS OTHERWISE SPECIFIED

1. FAB PER IPC-A-600.
2. MATERIAL: -EPOXY FIBERGLASS, NEMA GRADE FR-4
-FINISHED THICKNESS TO BE 0.062" +/- .005"
-TOTAL OF 4 LAYERS WITH 2 OZ. CU ON THE OUTER LAYERS
AND 1 OZ. CU ON THE INNER LAYERS.
-FLAMMABILITY RATING: 94 V-0 MINIMUM.
3. SIZE: CUT TO DIMENSIONS AND TOLERANCES SHOWN.
0.00" ARE PRIMARY DATUMS.
4. DRILLING: -DRILL HOLES PER SCHEDULE: PLATE THROUGH
HOLES WITH COPPER, 0.001" THICK MIN.
-ALL HOLE SIZES ARE SPECIFIED AFTER PLATING.
-HOLE LOCATION TOLERANCES ARE +/-0.003"
IN RELATION TO CENTER
-FOR VIAS SIZE > 0.01", VIAS HOLES NEED TO BE PLUGGED
AND COVERED WITH SOLDERMASK.
5. FINISH: -SMOBC USING LPI BOTH SIDES, COLOR GREEN.
-GOLD IMMERSION BOTH SIDES.
(LEAD FREE SOLDER CAN BE USED FOR PROTOTYPE)
-FOR SILKSCREEN: BOTH SIDES USE WHITE NON-CONDUCTIVE INK.
6. DO NOT ALTER ARTWORK e.g. TO ADD LOGO OR DATE CODE.
7. PAD SIZE CAN BE MODIFIED TO MEET END FINISH.
8. PCBs ARE TO BE RoHS COMPLIANT.
8. SCORING FOR PANELIZED PCB:



SIZE	QTY	SYM	PLATED	TOL
0.01	540	+	YES	+/-0.003
0.095	5	X	YES	+/-0.003
0.187	4	□	NO	+/-0.003
0.07	2	◇	NO	+/-0.003
0.035	3	⊗	YES	+/-0.003
0.006	5	⊗	YES	+/-0.003
0.055	10	⊕	YES	+/-0.003

- ADDITIONAL REQUIREMENT FOR PROTOTYPE FAB ONLY:
1. OUTGOING INSPECTION REPORT (BASED ON ACTUAL MEASUREMENTS AND CROSS SECTION).
 1. PROVIDE COMPLIANCE CERTIFICATES FOR PRODUCTION FAB ONLY:
 2. SOLDERABILITY BOARD WITH TEST RESULTS.
 3. OUTGOING INSPECTION REPORT (BASED ON ACTUAL MEASUREMENTS AND CROSS SECTION).
 4. VACUUM PACKED WITH DESICCANT.
 5. FULL PANEL WITH NO REJECT.

1630 MCCARTHY BLVD
MILPITAS, CA 95035
PH: (408)332-1000
WWW.LINEARTECH.COM
FOR CUSTOMER USE ONLY

UNLESS OTHERWISE SPECIFIED
DIMENSIONS ARE IN INCHES
TOLERANCES:
0.XXX" = ±0.01"
0.XXX" = ±0.005"
INTERPRET DIM AND TOL
PER ASME Y14.5M-1994
THIRD ANGLE PROJECTION

TITLE: FABRICATION DRAWING
20V, 2A, PARALLELED ULTRALOW NOISE,
ULTRAHIGH PSRR LDO REGULATOR

SIZE IC NO. REV
N/A LT3045-1EDD 1
DC2637A

FILENAME: DC2637A-1.PCB SHT 1 OF 1