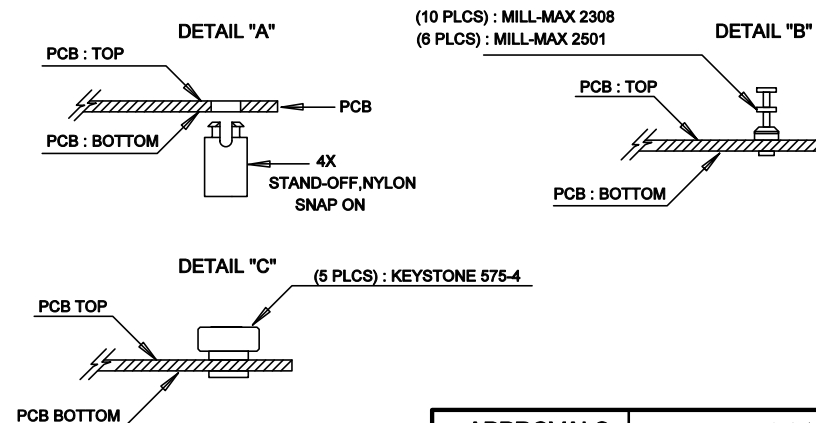
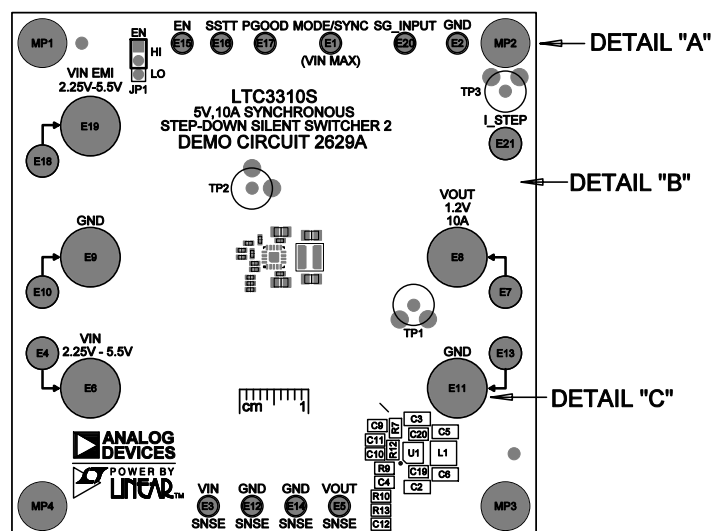


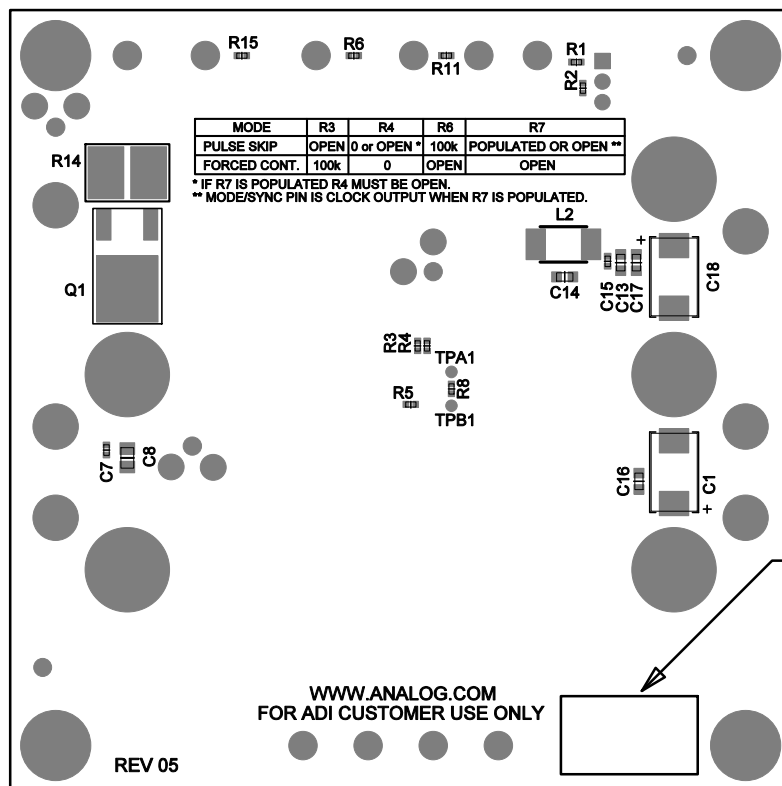
REVISION HISTORY				
ECO	REV	DESCRIPTION	APP. ENG.	DATE
-	05	PRODUCTION	MM	10-09-18



NOTES: UNLESS OTHERWISE SPECIFIED

1. WORKMANSHIP SHALL BE IN ACCORDANCE WITH IPC-A-610.
2. ASSEMBLY REFLOW PROFILE SHALL BE IN ACCORDANCE WITH J-STD-020 WITH MAXIMUM SOLDER TEMPERATURE OF 250 DEGREES CELSIUS.
3. PARTS TO OMIT WILL BE SPECIFIED ON THE BILL OF MATERIALS
LOCATIONS OF OMITTED PARTS SHALL BE FREE OF SOLDER.
MASK THE SOLDER STENCIL WHERE SMT PARTS ARE OMITTED.
4. INSTALL SHUNTS AS SHOWN ON ASSY DRAWING.
5. DEPANELIZE BOARDS AFTER ASSEMBLY AND ROUTE-OUT THE BREAKOUT TABS ON FOUR SIDES OF THE BOARD EDGE.
6. APPLY ASSEMBLY STAMP OR QA STAMP TO BOTTOM OF BOARD (UNSHOWY AREA).
7. INSTALL TURRETS, STAND-OFFS AS SHOWN BELOW:
8. APPLY DEMO S/N AT AREA ON BOTTOM SIDE AS SHOWN ON SHEET 2.



APPROVALS		ANALOG DEVICES			POWER BY LINEAR	
PCB DES	NC				FOR ADI CUSTOMER USE ONLY	
APP ENG	MM					
		TITLE: TOP ASSEMBLY DRAWING				
		5V, 10A SYNCHRONOUS STEP-DOWN SILENT SWITCHER 2				
		SIZE	IC NO.	LTC3310S	REV.	05
		N/A		DEMO CIRCUIT 2629A		
SCALE = NONE					SHT 1 OF 1	



APPROVALS		  POWER BY LINEAR™ FOR ADI CUSTOMER USE ONLY	
PCB DES.	NC	TITLE: BOTTOM ASSEMBLY DRAWING 5V, 10A SYNCHRONOUS STEP-DOWN SILENT SWITCHER 2	
APP ENG.	MM		
		SIZE N/A	IC NO. LTC3310S DEMO CIRCUIT 2629A
SCALE = NONE		REV 05	
		SHT 2 of 2	