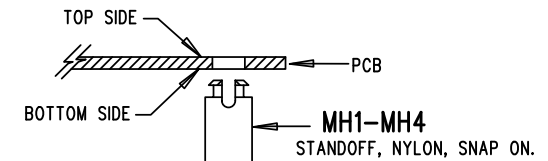


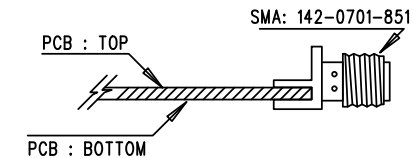
| REVISION HISTORY | | | | |
|------------------|-----|---------------|-----------|----------|
| ECO | REV | DESCRIPTION | APP. ENG. | DATE |
| - | 2 | 2ND PROTOTYPE | CHRIS P. | 03-16-17 |

NOTES: UNLESS OTHERWISE SPECIFIED

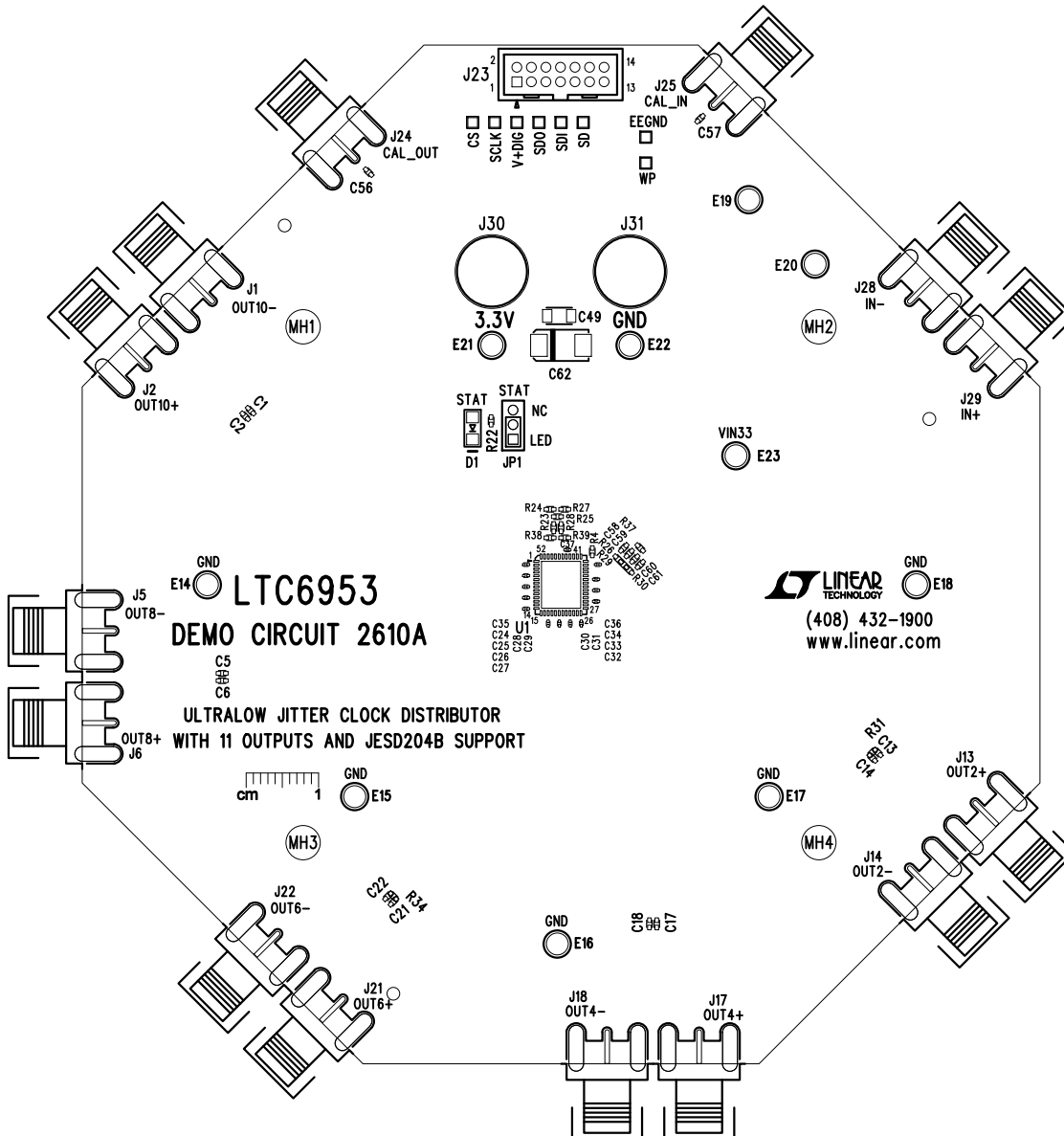
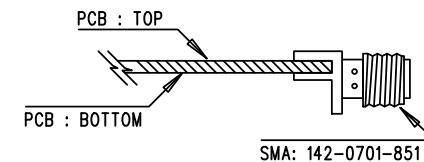
1. WORKMANSHIP SHALL BE IN ACCORDANCE WITH IPC-A-610.
2. ASSEMBLY PROCESS SHALL INCLUDE: REFLOW SOLDER TOP SIDE SMD. MAXIMUM SOLDER TEMPERATURE IS 240 DEGREES CELSIUS.
3. PARTS TO OMIT WILL BE SPECIFIED ON THE BILL OF MATERIALS. LOCATIONS OF OMITTED PARTS SHALL BE FREE OF SOLDER. MASK THE SOLDER STENCIL WHERE SMT PARTS ARE OMITTED.
4. INSTALL SHUNTS AS SHOWN.
5. DEPANELIZE BOARDS AFTER ASSEMBLY AND ROUTE-OUT THE BREAKOUT TABS ON FOUR SIDES OF THE BOARD EDGE.
6. DO NOT APPLY ANY KIND OF ASSEMBLY STAMP OR QA STAMP TO ANY BOARD.
7. INSTALL 4 STANDOFFS AT 4 LOCATIONS AS SHOWN BELOW:




8. INSTALL J1,J2,J5,J6,J17,J18,J24,J25,J28,J29 ON THE TOP SIDE AS SHOWN BELOW:



9. INSTALL J3,J4,J9,J10,J11,J12,J15,J16,J19,J20,J26,J27 ON THE BOTTOM SIDE AS SHOWN BELOW:



| APPROVALS | |  1630 MCCARTHY BLVD MILPITAS, CA 95035 PH: (408)432-1900 www.linear.com LTC CONFIDENTIAL- FOR CUSTOMER USE ONLY | | |
|--------------|----------|---|-----------------------------------|------------|
| PCB DES. | KIM T. | TITLE: TOP ASSEMBLY DRAWING ULTRALOW JITTER CLOCK DISTRIBUTOR WITH 11 OUTPUTS AND JESD204B SUPPORT | | |
| APP ENG. | CHRIS P. | | | |
| | | SIZE | IC NO. | REV. |
| | | N/A | LTC6953IUQG DEMO CIRCUIT 2610A | 2 |
| SCALE = NONE | | FILENAME: | DC2610A-2.PCB | SHT 1 OF 2 |