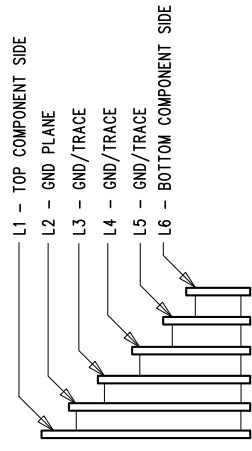
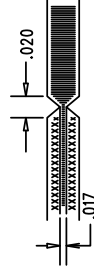


LAYER STRUCTURE



NOTES: UNLESS OTHERWISE SPECIFIED

1. FAB PER IPC-A-600.
2. MATERIAL: -EPOXY FIBERGLASS, NEMA GRADE FR-4  
-FINISHED THICKNESS TO BE 0.062" +/- .005"  
-TOTAL OF 6 LAYERS WITH 2 OZ. CU ON THE OUTER LAYERS  
-AND 1 OZ. CU ON THE INNER LAYERS.  
-FLAMMABILITY RATING: 94 V-0 MINIMUM.
3. SIZE: CUT TO DIMENSIONS AND TOLERANCES SHOWN.  
0.00" ARE PRIMARY DATUMS.
4. DRILLING: -DRILL HOLES PER SCHEDULE. PLATE THROUGH  
HOLES WITH COPPER, 0.001" THICK MIN.  
-ALL HOLE SIZES ARE SPECIFIED AFTER PLATING.  
-HOLE LOCATION TOLERANCES ARE +/-0.003"  
IN RELATION TO CENTER  
-FOR VIAS SIZE > 0.01", VIAS HOLES NEED TO BE PLUGGED  
AND COVERED WITH SOLDERMASK.  
-GOLD IMMERSION BOTH SIDES.
5. FINISH: -SNOBC USING LPI BOTH SIDES, COLOR GREEN(GLOSS).  
-LEAD FREE SOLDER CAN BE USED FOR PROTOTYPE)  
-FOR SILKSCREEN: BOTH SIDES USE WHITE NON-CONDUCTIVE INK.
6. DO NOT ALTER ARTWORK e.g. TO ADD LOGO OR DATE CODE.  
PAD SIZE CAN BE MODIFIED TO MEET END FINISH.
7. PCBs ARE TO BE RoHS COMPLIANT.
8. SCORING FOR PANELIZED PCB:



UNLESS OTHERWISE SPECIFIED

DIMENSIONS ARE IN INCHES  
TOLERANCES:  
0.XX" = +/-0.01"  
0.XXX" = +/-0.005"  
INTERPRET DIM AND TOL  
PER ASME Y14.5M-1994  
THIRD ANGLE PROJECTION

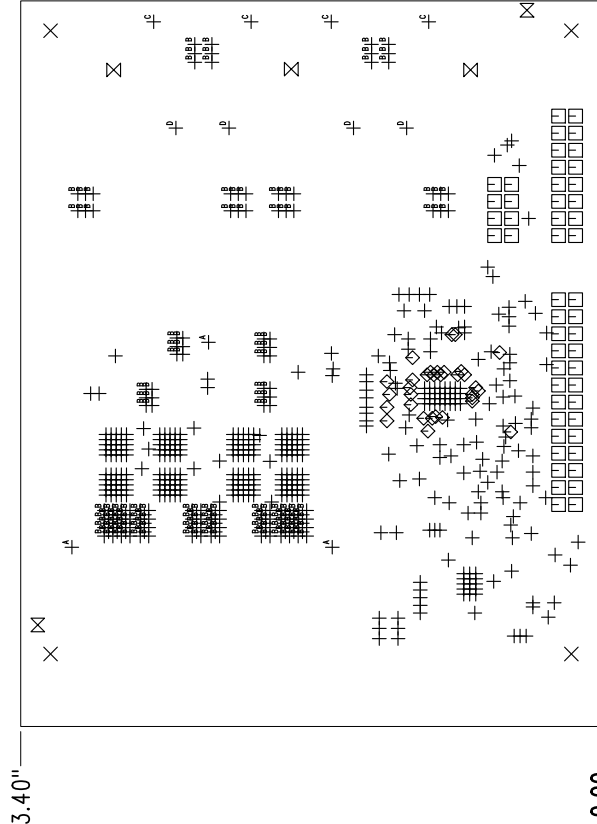


**ANALOG DEVICES** **POWER BY LITTEAR**  
www.analog.com (408) 432-1900

TITLE: FABRICATION DRAWING  
BIDIRECTIONAL SYNCHRONOUS  
BUCK-BOOST CONVERTER

SIZE	IC NO.	REV
N/A	LT8708EJHG	3
FILENAME:	DC2596A-3.PCB	SHT 1 OF 1

- ADDITIONAL REQUIREMENT FOR PROTOTYPE FAB ONLY:
1. OUTGOING INSPECTION REPORT (BASED ON ACTUAL MEASUREMENTS AND CROSS SECTION).  
ADDITIONAL REQUIREMENTS FOR PRODUCTION FAB ONLY:
    1. PROVIDE COMPLIANCE CERTIFICATES FOR RoHS, REACH AND CONFLICT-FREE MINERALS.
    2. SOLDERABILITY BOARD WITH TEST RESULTS.
    3. OUTGOING INSPECTION REPORT (BASED ON ACTUAL MEASUREMENTS AND CROSS SECTION).
    4. VACUUM PACKED WITH DESICCANT.
    5. FULL PANEL WITH NO REJECT.



SIZE	QTY	SYM	PLATED	TOL
0.01	398	+	YES	+/-0.003
0.187	4	X	NO	+/-0.003
0.035	50	□	YES	+/-0.003
0.006	32	◇	YES	+/-0.003
0.195	3	⊗	YES	+/-0.003
0.07	2	⊗	NO	+/-0.003
0.126	3	⊕	NO	+/-0.003
0.015	154	⊖	YES	+/-0.003
0.05906	4	⊖	YES	+/-0.003
0.07087	4	⊖	YES	+/-0.003