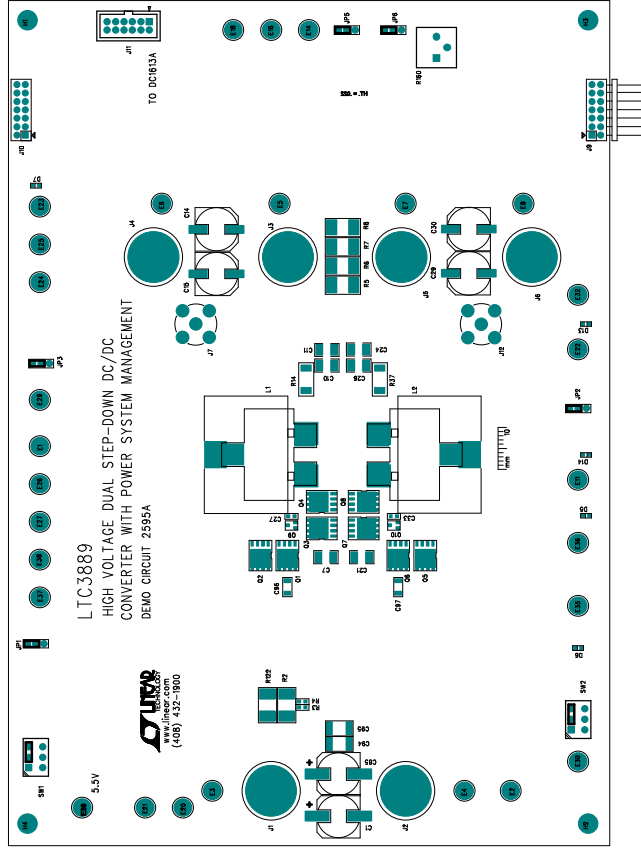
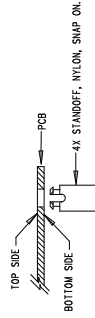



REVISION HISTORY				
ECO	REV	DESCRIPTION	APP. ENG.	DATE
-	2	PRODUCTION	HAORAN W.	11-28-17



NOTES: UNLESS OTHERWISE SPECIFIED

1. WORKMANSHIP SHALL BE IN ACCORDANCE WITH PC-A-910.
2. ASSEMBLY PROCESS SHALL INCLUDE A 10% HOLDOUT FOR SIDE SMD.
3. ALL SOLDERING OPERATIONS SHALL BE CONDUCTED AT 260°C.
4. PARTS TO QWL WILL BE SPECIFIED ON THE BILL OF MATERIALS.
5. LOCATIONS OF OMITTED PARTS SHALL BE FREE OF SOLDER.
6. MASK THE SOLDER STENCIL WHERE SMT PARTS ARE OMITTED.
7. 4. INSTALL SHIELDS AS SHOWN ON ASSY DRAWING.
8. 5. DEPANALIZE BOARDS AFTER ASSEMBLY AND ROUTE-OUT THE BREAKOUT TABS ON FOUR SIDES OF THE BOARD EDGE.
9. 6. DO NOT APPLY ANY KIND OF ASSEMBLY STAMP OR QA STAMP TO ANY BOARD.
10. 7. INSTALL 4 STANDOFFS AT 4 LOCATIONS AS SHOWN BELOW:



APPROVALS PCB DES. _____ RZ APP. ENG. _____ HUBMAN M.		 LINEAR TECHNOLOGY 2500 KENNEDY BLVD FOLSOM, CA 95630 (916) 961-8000 FAX (916) 961-8001 www.linear.com E-MAIL: info@linear.com THE CUSTOMER IS OUR ONLY	
TITLE: TOP ASSEMBLY DRAWING HIGH VOLTAGE DUAL STEP-DOWN DC/DC CONVERTER CONVERTER WITH POWER SYSTEM MANAGEMENT		REV. _____ SIZE IC NO. LTC3889UKG N/A DEMO CIRCUIT 2959A 2 FILENAME: DC2959A-2.PCB SHEET 1 OF 2	
SCALE = NONE			