

LT8609S

42V 2A/3A PEAK MICROPOWER
SYNCHRONOUS STEP-DOWN REGULATOR
DC2522A

VIN
5.5V-42V

E10

VEMI
5.5V-42V

E1



E2

GND

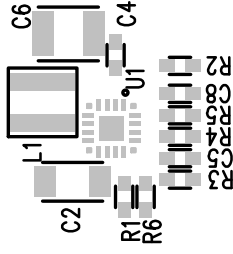
VOUT
5V/2A

E3



E4

GND



E8

PG

E6

EN/UV

E7

TR/SS

E5

SYNC

E9

GND

TOP SILKSCREEN
LINEAR TECHNOLOGY
DC2522A-4 LT8609S 4-12-17