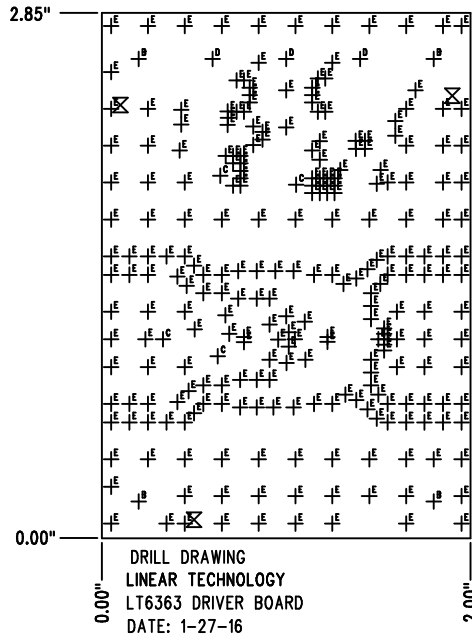
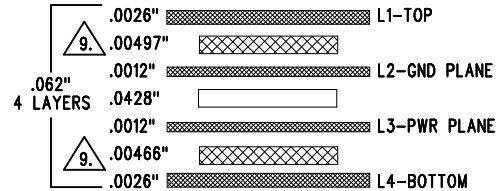


REVISION HISTORY				
ECO	REV	DESCRIPTION	APP. ENG.	DATE
-	0	1ST PROTOTYPE	D. STUETZLE	03-20-15

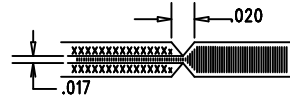


LAYER STRUCTURE



NOTES: UNLESS OTHERWISE SPECIFIED

- FAB PER IPC-A-600.
- MATERIAL: -LEAD FREE ASSEMBLY COMPLIANT, ISOLA FR-370HR OR EQUIVALENT.
-FINISHED THICKNESS TO BE 0.062" +/- .005"
-TOTAL OF 4 LAYERS WITH 2 OZ. CU ON THE OUTER LAYERS AND 1 OZ. CU ON THE INNER LAYERS.
-FLAMMABILITY RATING: 94 V-0 MINIMUM.
- SIZE: CUT TO DIMENSIONS AND TOLERANCES SHOWN.
0.00" ARE PRIMARY DATUMS.
- DRILLING: -DRILL HOLES PER SCHEDULE. PLATE THROUGH HOLES WITH COPPER, 0.001" THICK MIN.
-ALL HOLE SIZES ARE SPECIFIED AFTER PLATING.
-HOLE LOCATION TOLERANCES ARE +/-0.003" IN RELATION TO CENTER
- FINISH: -SMOBC USING LPI BOTH SIDES, COLOR GREEN.
-GOLD IMMERSION BOTH SIDES.
-FOR SILKSCREENS: USE WHITE NON-CONDUCTIVE INK.
- DO NOT ALTER ARTWORK e.g. TO ADD LOGO OR DATE CODE. PAD SIZE CAN BE MODIFIED TO MEET END FINISH.
- PCBS ARE TO BE RoHS COMPLIANT.
- SCORING FOR PANELIZED PCB (PRODUCTION FAB ONLY):



9. SUBJECT TO CHANGE BY MANUFACTURER, DEPENDING ON DIELECTRIC CONSTANT DEVIATIONS. PLEASE CONSULT LTC.

SIZE	QTY	SYM	PLATED	TOL
0.07	3	⊗	NO	+/-0.003
0.19	4	⊕ ^B	NO	+/-0.003
0.063	4	⊕ ^C	YES	+/-0.003
0.094	3	⊕ ^D	YES	+/-0.003
0.012	255	⊕ ^E	YES	+/-0.003

UNLESS OTHERWISE SPECIFIED		APPROVALS		<p>1630 MCCARTHY BLVD MILPITAS, CA 95035 PH: (408)32-1900 www.linear.com LTC CONFIDENTIAL- FOR CUSTOMER USE ONLY</p>	
DIMENSIONS ARE IN INCHES TOLERANCES: 0.XX" = ±0.01" 0.XXX" = ±0.005" INTERPRET DIM AND TOL PER ASME Y14.5M-1994 THIRD ANGLE PROJECTION		PCB DES.	D. STUETZLE		
		APP ENG.	D. STUETZLE	TITLE: FABRICATION DRAWING	
				LT6363 DRIVER AMP	
		SIZE	IC NO.	REV	
		N/A	LT6363 DEMO CIRCUIT 2487A	1	
		SCALE = NONE		FILENAME: DC2487A.PCB	SHT 1 OF 1