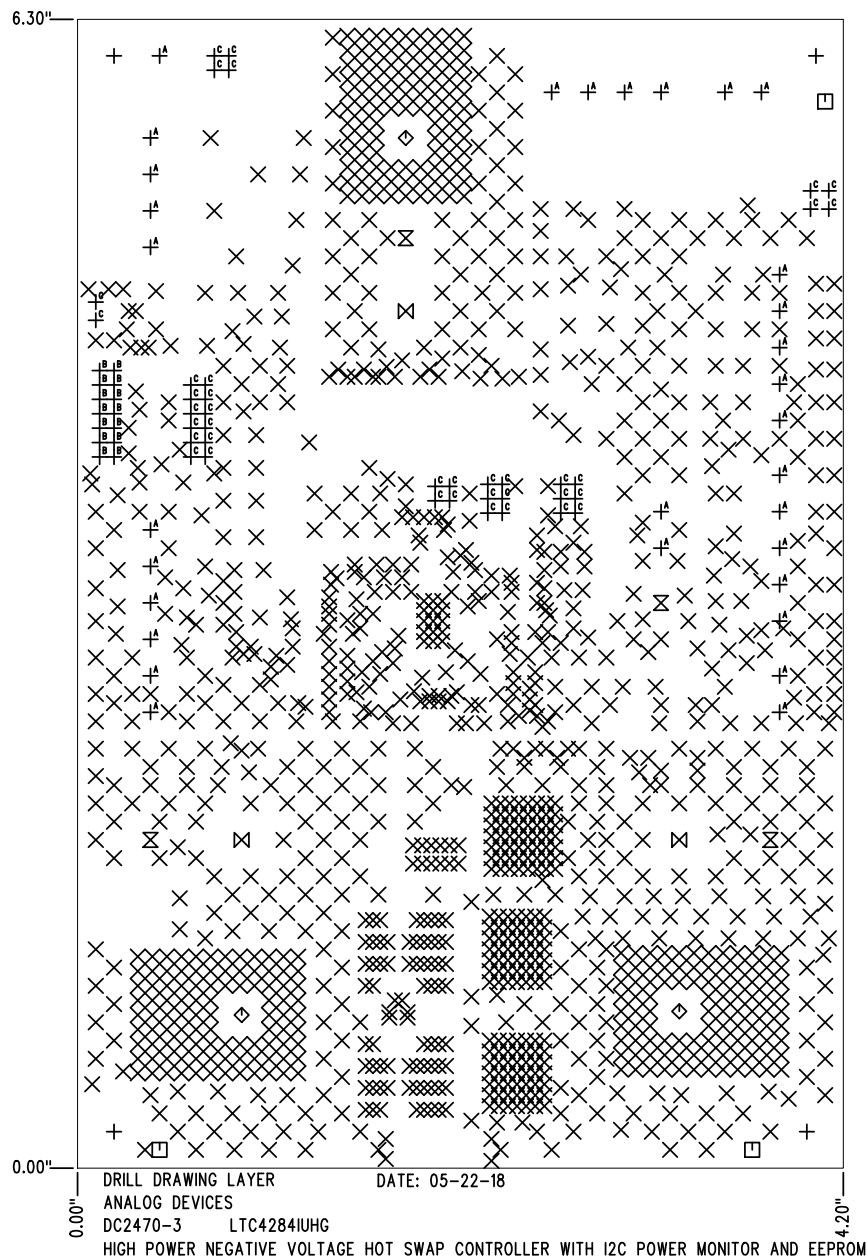


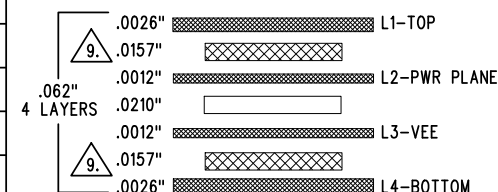
SHOWN FROM TOP SIDE



| SIZE | QTY | SYM | PLATED | TOL |
|-------|------|----------------|--------|-----------|
| 0.19 | 4 | + | NO | +/-0.003" |
| 0.012 | 1375 | × | YES | +/-0.003" |
| 0.07 | 3 | □ | NO | +/-0.003" |
| 0.255 | 3 | ◇ | YES | +/-0.003" |
| 0.094 | 4 | ⊗ | YES | +/-0.003" |
| 0.207 | 3 | ⊗ | YES | +/-0.003" |
| 0.063 | 31 | + ^A | YES | +/-0.003" |
| 0.04 | 14 | + ^B | YES | +/-0.003" |
| 0.035 | 38 | + ^C | YES | +/-0.003" |

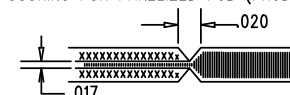
| REVISION HISTORY | | | | |
|------------------|-----|-------------|-----------|----------|
| ECO | REV | DESCRIPTION | APP. ENG. | DATE |
| - | 3 | PRODUCTION | SAL A. | 08-31-18 |

LAYER STRUCTURE



NOTES: UNLESS OTHERWISE SPECIFIED

- FAB PER IPC-A-600.
- MATERIAL: -LEAD FREE ASSEMBLY COMPLIANT, ISOLA FR-370HR OR EQUIVALENT.
-FINISHED THICKNESS TO BE 0.062" +/- .005"
-TOTAL OF 4 LAYERS WITH 2 OZ. CU ON THE OUTER LAYERS AND 1 OZ. CU ON THE INNER LAYERS.
-FLAMMABILITY RATING: 94 V-0 MINIMUM.
- SIZE: CUT TO DIMENSIONS AND TOLERANCES SHOWN.
0.00" ARE PRIMARY DATUMS.
- DRILLING: -DRILL HOLES PER SCHEDULE. PLATE THROUGH HOLES WITH COPPER, 0.001" THICK MIN.
-ALL HOLE SIZES ARE SPECIFIED AFTER PLATING.
-HOLE LOCATION TOLERANCES ARE +/-0.003" IN RELATION TO CENTER
- FINISH: -SMOBC USING LPI BOTH SIDES, COLOR GREEN.
-GOLD IMMERSION BOTH SIDES.
-FOR SILKSCREENS: USE WHITE NON-CONDUCTIVE INK.
- DO NOT ALTER ARTWORK e.g. TO ADD LOGO OR DATE CODE.
PAD SIZE CAN BE MODIFIED TO MEET END FINISH.
- PCBS ARE TO BE RoHS COMPLIANT.
- SCORING FOR PANELIZED PCB (PRODUCTION FAB ONLY):



9. SUBJECT TO CHANGE BY MANUFACTURER, DEPENDING ON DIELECTRIC CONSTANT DEVIATIONS. PLEASE CONSULT LTC.

| | | | | | | | | | |
|---|--|--------------|--------|-------------------------|--|-----------------|--|--|--|
| UNLESS OTHERWISE SPECIFIED | | APPROVALS | | ANALOG DEVICES | | POWER BY LINEAR | | 1630 MCCARTHY BLVD. MILPITAS, CA 95035 TEL: (408)432-1900 | |
| DIMENSIONS ARE IN INCHES | | PCB DES. | KIM T. | www.analog.com | | www.linear.com | | TITLE: FABRICATION DRAWING | |
| TOLERANCES: | | APP ENG. | SAL A. | | | | | HIGH POWER NEGATIVE VOLTAGE HOT SWAP CONTROLLER WITH I2C POWER MONITOR AND EEPROM | |
| 0.XX" = ±0.01" | | | | | | | | | |
| 0.XXX" = ±0.005" | | | | | | | | | |
| INTERPRET DIM AND TOL PER ASME Y14.5M-1994 | | | | SIZE | | IC NO. | | LTC4284IUHG | |
| THIRD ANGLE PROJECTION | | | | N/A | | | | REV 3 | |
| | | SCALE = NONE | | FILENAME: DC2470A-3.PCB | | SHT 1 OF 1 | | | |