

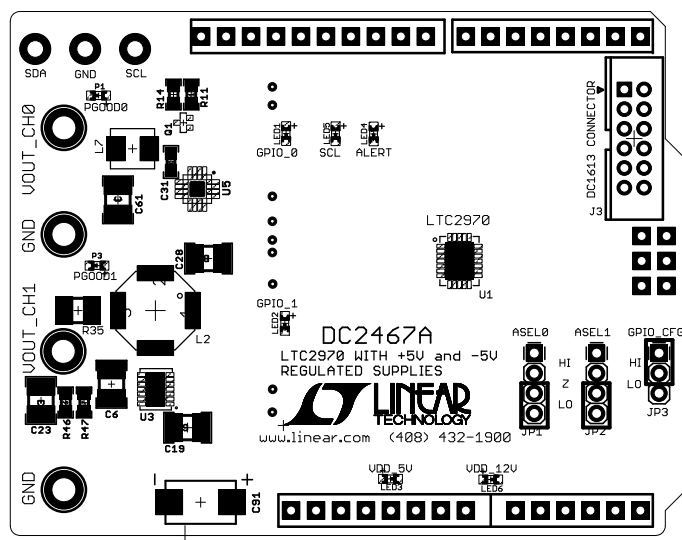
NOTES: UNLESS OTHERWISE SPECIFIED


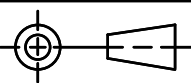
1. WORKMANSHIP SHALL BE IN ACCORDANCE WITH IPC-A-610
2. PARTS TO OMIT WILL BE SPECIFIED ON THE BILL OF MATERIALS.
MASK THE SOLDER STENCIL WHERE PARTS ARE OMITTED.
3. DEPANELIZE BOARDS AFTER ASSEMBLY AND ROUTE OUT THE BREAKOUT TABS ON ALL EDGES.
4. ASSY PROCESS WILL INCLUDE: REFLOW SOLDER TOP SIDE SMD.
5. DO NOT APPLY ANY KIND OF ASSEMBLY STAMP OR QA STAMP ON ANY BOARD

REVISION HISTORY

ECO	REV	DESCRIPTION	APPROVED	DATE
-	1	PRODUCTION	NATHAN E.	01/30/2016

6. INSTALL J1 HEADERS WITH LONG PINS POINTED OUT OF THE BOTTOM OF THE BOARD (DOWN).
7. INSTALL SHUNTS AS SHOWN.
8. MIND THE POLARITY OF C91 AND ALL LEDS



UNLESS OTHERWISE SPECIFIED DIMENSIONS ARE IN INCHES TOLERANCES ON ANGLE +/- 1° 0.XX" = +/- 0.01" 0.XXX" = +/- 0.005" INTERPRET DIM AND TOL PER ASME Y14.5M-1994	APPROVALS			 <div>1630 MCCARTHY BLVD. MILPITAS, CA 95033 PH: (408) 432-1900 LTC CONFIDENTIAL FOR CUSTOMER USE ONLY</div>	
		NAME	DATE		
	PCB DES.	NATHAN E.	1-30-16		
	ENG	NATHAN E.	1-30-16		
	THIRD ANGLE PROJECTION				
				TITLE: BOARD ASSEMBLY DRAWING LTC2970 LINDUINO SHIELD WITH LT3581 AND LTC3604	
DO NOT SCALE DRAWING	SCALE: NONE		SIZE N/A	IC NO. LTC2970 DEMO CIRCUIT 2467	REV 1
	FILENAME: DC2467		SHEET 1 OF 1		