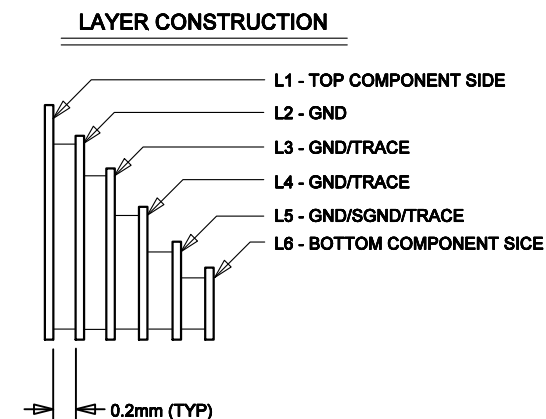


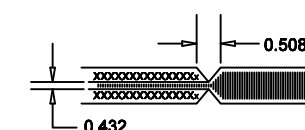
LTC CONFIDENTIAL - For Customer Use Only

REVISION HISTORY				
ECO	REV	DESCRIPTION	DATE	APPROVED
	4	PROD	07/20/17	<i>[Signature]</i>




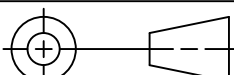


NOTES: UNLESS OTHERWISE SPECIFIED,

1. ARTWORK P/N DC2456A REV 3.
2. FAB PER IPC-A-600
3. PCB SHALL MEET RoHS COMPLIANCE.
4. MATERIAL:
 - A. LAMINATE: EPOXY FIBERGLASS, NEMA GRADE FR-4
FLAMMABILITY RATING: 94 V-2 MINIMUM.
 - B. THICKNESS: 1.6 +/- 0.1 mm
 - C. CLAD: 2 OZ. (50um) EXTERNAL LAYERS.
1 OZ. (25um) COPPER ON TWO INTERNAL LAYERS.
5. FINISH:
 - A. COATING: SOLDERMASK OVER BARE COPPER,
COLOR, GREEN LPI.
 - B. PLATING: GOLD IMMERSION BOTH SIDES.
 - C. SILKSCREEN: BOTH COMPONENT SIDES WITH
WHITE NON-CONDUCTIVE INK.
6. TOLERANCES:
 - A. WARPAGE: (0.075mm) MAX. ALONG THE LONGEST
DIAG. AS PER IPC-TM650 METHOD 2.4.22
 - B. ETCHING: +0.03mm, -0.3mm OF MASTER PATTERN.
 - C. REGISTRATION: 0.075mm MAX.
 - D. MASK THICKNESS: 0.025mm MIN., 0.075mm MAX.
 - E. HOLE PLATING: 22um +/- 3um.
7. SIZE:
 - A. CUT TO DIMENSIONS AND TOLERANCES SHOWN.
0.00 ARE PRIMARY DATUMS.
8. HOLE DIAMETERS ARE POST-PLATED SIZES.
9. DEBURR AND BREAK ALL SHARP EDGES.
10. DO NOT ALTER ARTWORK e.g. TO ADD LOGO OR DATE CODE.
11. SCORING:



SIZE	QTY	SYM	PLATED	TOL
0.25	190	+	YES	+/-0.08
0.6	130	×	YES	+/-0.08
0.9	9	□	YES	+/-0.08
1.63	4	◇	YES	+/-0.13
1.8	2	⊗	NO	+/-0.13
2.42	7	⊗	YES	+/-0.13
4.75	4	⊕ ^A	NO	+/-0.13
5.21	4	⊕ ^B	YES	+/-0.13

UNLESS OTHERWISE SPECIFIED DIMENSIONS ARE IN MILLIMETERS TOLERANCES ON ANGLE ± 1° .XX ± 0.25 XXX ± 0.127	CONTRACT NO		 <div>1630 McCarthy Blvd. Milpitas, CA 95035 Phone: (408)432-1900 Fax: (408)434-0507</div>			
	APPROVALS	DATE				
	DRAWN 	07/27/15	TITLE FAB, LTC3779EFE, HIGH EFFICIENCY HIGH VOLTAGE BUCK-BOOST CONVERTER			
	CHECKED					
APPROVED 	07/20/17					
THIRD ANGLE PROJECTION	ENGINEER		SIZE B	CAGE CODE	DWG NO DC2456A	REV 4
			SCALE 1/1		FILENAME: 2456A-3.PCB	SHEET 1 OF 1
DO NOT SCALE DRAWING						