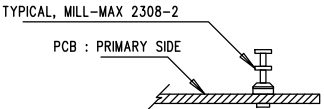


REVISION HISTORY				
ECO	REV	DESCRIPTION	APP. ENG.	DATE

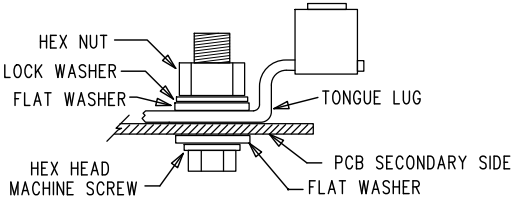
NOTES: UNLESS OTHERWISE SPECIFIED

1. WORKMANSHIP SHALL BE IN ACCORDANCE WITH IPC-A-610.
2. ASSEMBLY PROCESS SHALL INCLUDE REFLOW SOLDER SMD BOTH SIDES. SOLDER TEMPERATURE SHALL NOT EXCEED 240 DEGREES CELSIUS.
3. UNSTUFFED LAND PATTERNS SHALL BE FREE OF SOLDER. MASK THE SOLDER STENCIL AT THESE LOCATIONS.
4. INSTALL SHUNTS ON JP1-JP6 AS DEPICTED.
5. DEPANELIZE BOARDS AFTER ASSEMBLY AND ROUTE-OUT THE BREAKOUT TABS ON ALL BOARD EDGES.
6. INSTALL MIL-MAX #2308 TURRETS, E3-E20,E22,E23 AS SHOWN:



7. INSTALL BANANA JACK RECEPT., E21, ON PRIMARY SIDE.
8. INSTALL TWO-HOLE TONGUE LUGS, E1-2, USING 5/16 HARDWARE PROVIDED. DO NOT SOLDER. SEE DETAIL A.
9. INSTALL BUMPERS, KEYSTONE #727, MP1-4, ON SECONDARY SIDE USING #4-40 HARDWARE PROVIDED. SEE DETAIL B.

DETAIL A- TONGUE LUG MOUNTING



DETAIL B- BUMPER MOUNTING

