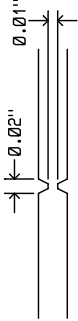


REVISION HISTORY			
ECO	REV	DESCRIPTION	APPROVED
-	2	2ND PROTOTYPE	KWB
			10-14-15

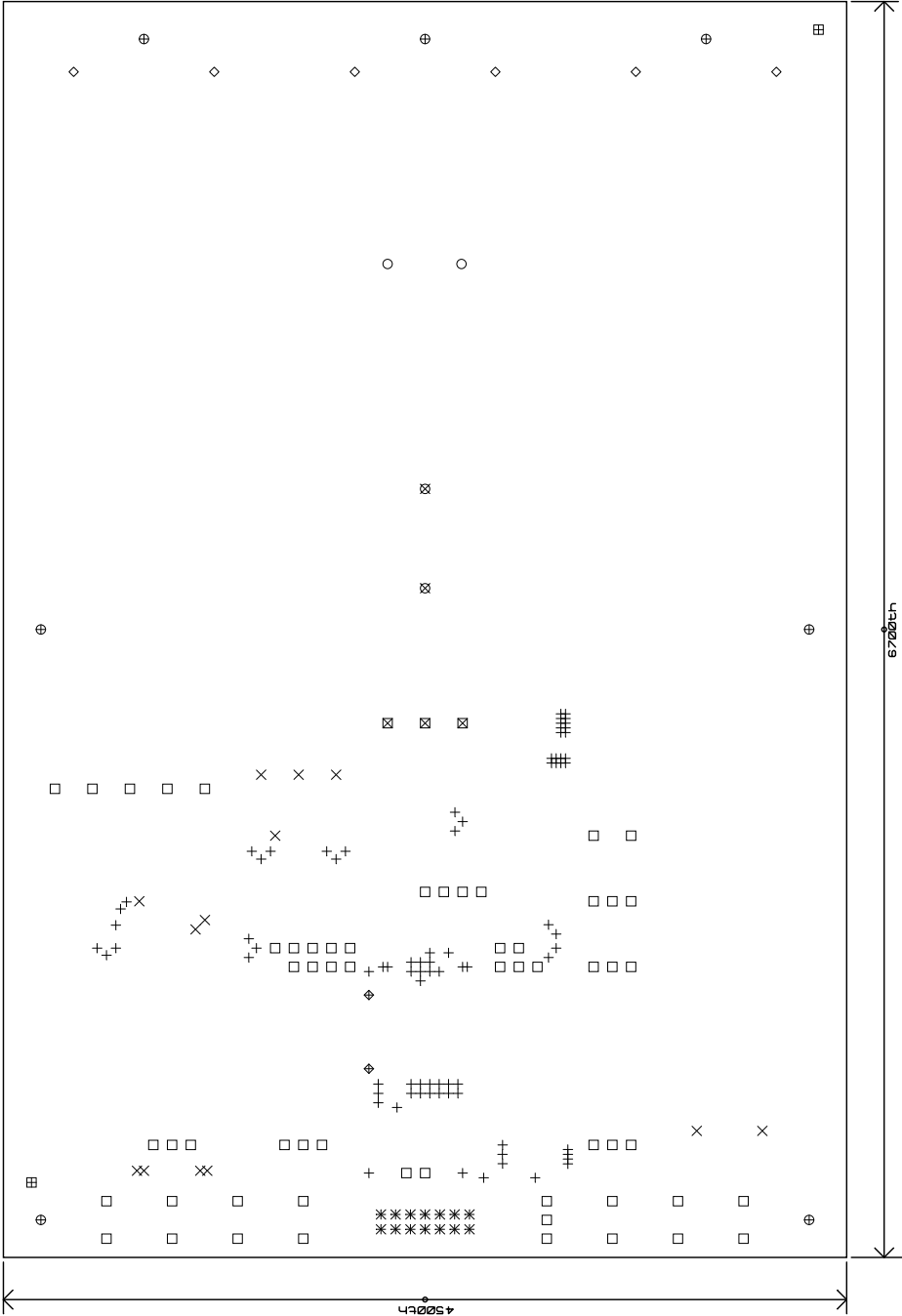
NOTES: UNLESS OTHERWISE SPECIFIED

1. FAB PER IPC-A-600
2. MATERIAL: -LEAD FREE ASSEMBLY COMPLIANT, ISOLA FR-370HA  
OR EQUIVALENT  
-FINISHED THICKNESS TO BE 0.062" +/- .005"  
-TOTAL OF 4 LAYERS WITH 1 OZ. CU ON THE OUTER LAYERS AND 0.5 OZ. CU ON THE INNER LAYERS  
-FLAMMABILITY RATING: 94V-0 MINIMUM  
3. SIZE: CUT TO DIMENSIONS AND TOLERANCES SHOWN  
4. DRILLING: -DRILL HOLES PER SCHEDULE. PLATE THROUGH HOLES WITH COPPER 0.001" THICK MIN.  
-ALL HOLE SIZES ARE SPECIFIED AFTER PLATING  
-HOLE LOCATION TOLERANCES ARE +/- 0.003" IN RELATION TO CENTER  
5. FINISH: -SNOBC USING LPT BOTH SIDES, COLOR GREEN GLOSS  
-GOLD IMMERSION (ENIG) BOTH SIDES  
-SILKSCREEN TOP SIDE USE WHITE NON-CONDUCTIVE INK  
6. DO NOT ALTER ARTWORK e.g. TO ADD LOGO OR DATE CODE  
PAD SIZE MAY BE MODIFIED TO MEET END FINISH  
7. PCBs ARE TO BE ROHS COMPLIANT  
8. DESIGN HAS NON-SOLDER MASK DEFINED PADS ON U1  
U1 SOLDER MASK SIZE IS 32 MIL AND PAD SIZE IS 25MIL  
DO NOT CHANGE ANY SIZE ON THIS COMPONENT  
9. SCORING FOR PANELIZED PCB:

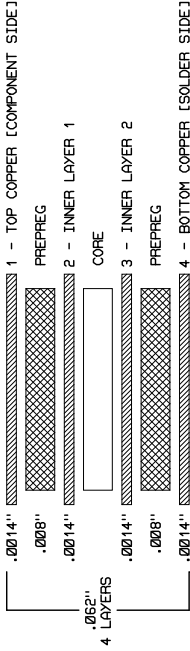


SIZE	QTY	SYM	PLATED	TOL
0.010"	82	+	YES	+/-0.003"
0.015"	13	x	YES	+/-0.003"
0.030"	2	⊕	YES	+/-0.003"
0.035"	14	*	YES	+/-0.003"
0.040"	59	□	YES	+/-0.003"
0.060"	3	⊗	YES	+/-0.003"
0.070"	2	⊞	NO	+/-0.003"
0.082"	2	○	YES	+/-0.003"
0.160"	2	⊗	YES	+/-0.003"
0.190"	7	⊕	NO	+/-0.003"
0.215"	6	◇	YES	+/-0.003"

SHOWN FROM COMPONENT SIDE



LAYER STRUCTURE



LINEAR TECHNOLOGY

1630 McCarthy Blvd.  
Milpitas, CA 95035  
Phone: (408) 432-1900  
Fax: (408) 434-0507  
www.linear.com

UNLESS OTHERWISE SPECIFIED

DIMENSIONS ARE IN INCHES  
TOLERANCES:  
0.XX" = +/- 0.01"  
0.XXX" = +/- 0.005"  
INTERPRET DIM AND TOL PER  
ASME Y14.5M-1994

APPROVALS

PCB DES. KWB  
APP ENG. KWB

ANY/SIDE ISOLATED SWITCH CONTROLLER

TITLE: FABRICATION DRAWING

SCALE = 1:1

THIRD ANGLE PROJECTION

DATE: Wednesday, October 14th, 2015

SHEET 1 OF 1

REV. 2

LTMS1001Y  
DEMO CIRCUIT 2423A

LTC CONFIDENTIAL  
FOR CUSTOMER  
USE ONLY