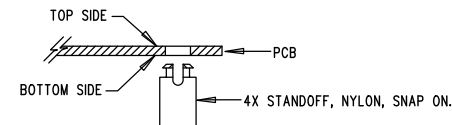


REVISION HISTORY				
ECO	REV	DESCRIPTION	APPR	DATE
-	2	PRODUCTION	DL	11-30-15

NOTES: UNLESS OTHERWISE SPECIFIED


1. WORKMANSHIP SHALL BE IN ACCORDANCE WITH IPC-A-610.
2. ASSEMBLY PROCESS SHALL INCLUDE: REFLOW SOLDER TOP SIDE SMD. MAXIMUM SOLDER TEMPERATURE IS 240 DEGREES CELSIUS.
3. PARTS TO OMIT WILL BE SPECIFIED ON THE BILL OF MATERIALS. LOCATIONS OF OMITTED PARTS SHALL BE FREE OF SOLDER. MASK THE SOLDER STENCIL WHERE SMT PARTS ARE OMITTED.
4. INSTALL SHUNTS AS SHOWN ON ASSY DRAWING.
5. DEPANELIZE BOARDS AFTER ASSEMBLY AND ROUTE-OUT THE BREAKOUT TABS ON FOUR SIDES OF THE BOARD EDGE.
6. DO NOT APPLY ANY KIND OF ASSEMBLY STAMP OR QA STAMP TO ANY BOARD.
7. INSTALL STANDOFFS AS SHOWN BELOW:



- 8 SEE THE BILL OF MATERIALS TO MARK THE APPROPRIATE LTC PART NUMBER AND ASSEMBLY TYPE WITH BLACK PERMANENT MARKER.

BOARD ASSEMBLY

ASSY	VOUT1
2422A-A	12V
2422A-B	12V
2422A-C	5V

APPROVALS		 <div> 1630 MCCARTHY BLVD MILPITAS, CA 95035 PH: (408) 432-1900 www.linear.com LTC CONFIDENTIAL - FOR CUSTOMER USE ONLY </div>		
PCB DES.	LT			
APP ENG.	DL	TITLE: TOP ASSEMBLY DRAWING		
		WIDE VIN, STEP UP/DOWN POWER SUPPLY		
		SIZE	IC NO.	REV.
		N/A	LTC7812EUH DEMO CIRCUIT 2422A	2
SCALE = NONE		FILENAME: DC2422A-2.PCB		SHT 1 OF 2