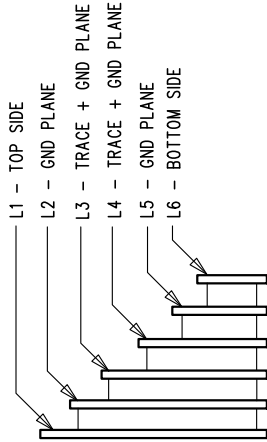


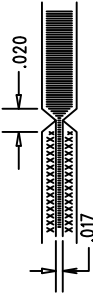
REVISION HISTORY			
ECO	REV	DESCRIPTION	APP. ENG.
-	3	PRODUCTION	Charlie
			2-3-17

LAYER STRUCTURE



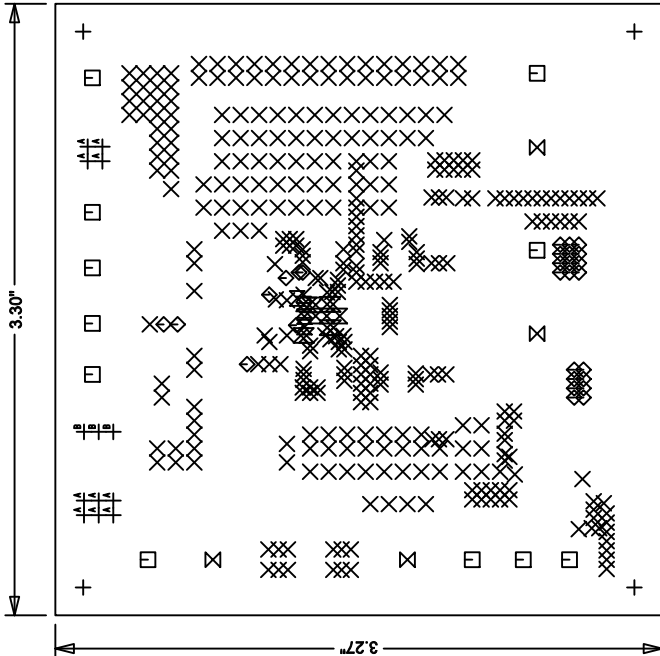
NOTES: UNLESS OTHERWISE SPECIFIED

1. FAB PER IPC-A-600.
2. MATERIAL: -LEAD FREE ASSEMBLY COMPLIANT, ISOLA FR-370HR OR EQUIVALENT.
-FINISHED THICKNESS TO BE 0.062" +/- .005"
-TOTAL OF 6 LAYERS WITH 2 OZ. CU ON THE OUTER AND THE INNER LAYERS.
-FLAMMABILITY RATING: 94 V-0 MINIMUM.
3. SIZE: CUT TO DIMENSIONS AND TOLERANCES SHOWN.
0.00 ARE PRIMARY DATUMS.
4. DRILLING: -DRILL HOLES PER SCHEDULE. PLATE THROUGH HOLES WITH COPPER, 0.001" THICK MIN.
-ALL HOLE SIZES ARE SPECIFIED AFTER PLATING.
-HOLE LOCATION TOLERANCES ARE +/-0.003" IN RELATION TO CENTER
5. FINISH: -SNOBC USING LPI BOTH SIDES, COLOR GREEN.
-GOLD IMMERSION BOTH SIDES.
-FOR SILKSCREENS: USE WHITE NON-CONDUCTIVE INK.
6. DO NOT ALTER ARTWORK e.g. TO ADD LOGO OR DATE CODE.
7. DESIGN HAS SOLDER MASK DEFINED PADS ON UI.
UI SOLDER MASK SIZE IS 25 MIL AND PAD SIZE IS 29 MIL.
DON'T CHANGE PAD SIZE OR SOLDER MASK SIZE.
8. PCBs ARE TO BE RoHS COMPLIANT.
9. SCORING FOR PANELIZED PCB:



UNLESS OTHERWISE SPECIFIED	
DIMENSIONS ARE IN INCHES	
TOLERANCES:	
0.XX" = ±0.01"	
0.XXX" = ±0.005"	
INTERPRET DIM AND TOL PER ASME Y14.5M-1994	
THIRD ANGLE PROJECTION	

1630 MCCARTHY BLVD MILPITAS, CA 95035 PH: (408)432-1800 FAX: (408)432-1801 WWW.LINEARTECH.COM LTC COMPLIANT - FOR CUSTOMER USE ONLY	
TITLE: FABRICATION DRAWING HIGH EFFICIENCY 20A SYNCHRONOUS BUCK REGULATOR	
SIZE	IC NO. LTC7150EY
N/A	REV 3
FILENAME: DC2411A-3.PCB	
SHT 1 OF 1	



SIZE	QTY	SYM	PLATED	TOL
0.185	4	+	NO	+/-0.003
0.012	354	X	YES	+/-0.003
0.095	11	□	YES	+/-0.003
0.01	28	◇	YES	+/-0.003
0.205	4	⊗	YES	+/-0.003
0.008	16	⊗	YES	+/-0.003
0.04	10	⊕	YES	+/-0.003
0.035	3	⊕	YES	+/-0.003