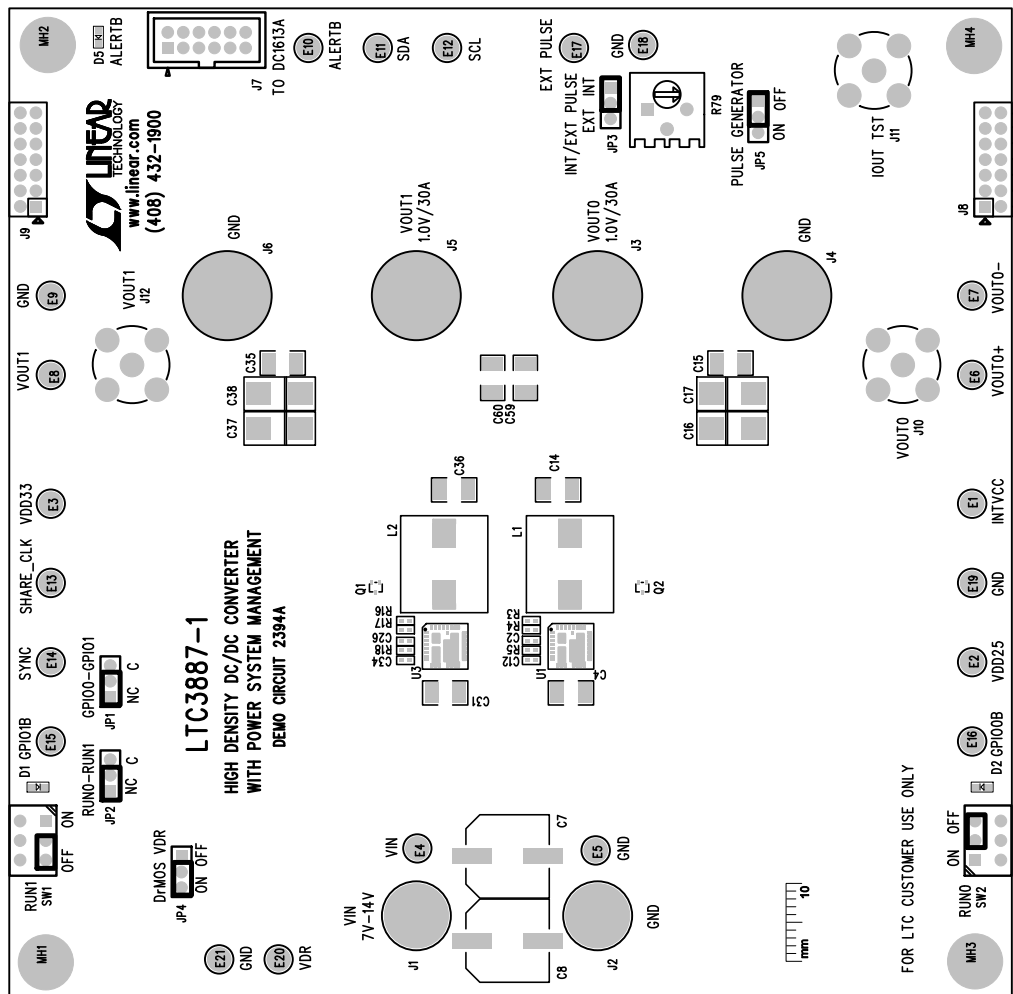
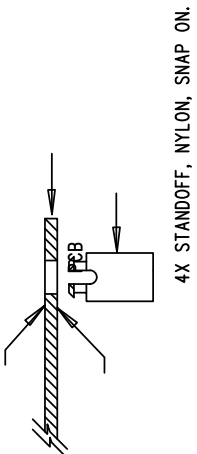


REVISION HISTORY			
ECO	REV	DESCRIPTION	APP. ENG.
-	1	PRODUCTION	YI S.
			DATE
			8-11-15



NOTES: UNLESS OTHERWISE SPECIFIED

- 1. WORKMANSHIP SHALL BE IN ACCORDANCE WITH IPC-A-610.
- 2. ASSEMBLY PROCESS SHALL INCLUDE: REFLOW SOLDER TOP SIDE SMD. MAXIMUM SOLDER TEMPERATURE IS 240 DEGREES CELSIUS.
- 3. PARTS TO OMIT WILL BE SPECIFIED ON THE BILL OF MATERIALS. LOCATIONS OF OMITTED PARTS SHALL BE FREE OF SOLDER. MASK THE SOLDER STENCIL WHERE SMT PARTS ARE OMITTED.
- 4. INSTALL SHUNTS AS SHOWN ON ASSY DRAWING.
- 5. DEPANELIZE BOARDS AFTER ASSEMBLY AND ROUTE-OUT THE BREAKOUT TABS ON FOUR SIDES OF THE BOARD EDGE.
- 6. DO NOT APPLY ANY KIND OF ASSEMBLY STAMP OR QA STAMP TO ANY BOARD.
- 7. INSTALL 4 STANDOFFS AT 4 LOCATIONS AS SHOWN BELOW:



APPROVALS		LINEAR TECHNOLOGY	
PCB DES.	HZ	1630 MCCARTHY BLVD MILPITAS, CA 95035 PH: (408)432-1800 WWW.LINEAR.COM LTC3887-1EJ FOR CUSTOMER USE ONLY	
APP ENG.	YI S.	TITLE: TOP ASSEMBLY DRAWING	
		HIGH DENSITY DC/DC CONVERTER WITH POWER SYSTEM MANAGEMENT	
		SIZE	REV.
		N/A	1
		IC NO.	DC2394A
		FILENAME: DC2394A.PCB	SHT 1 OF 2