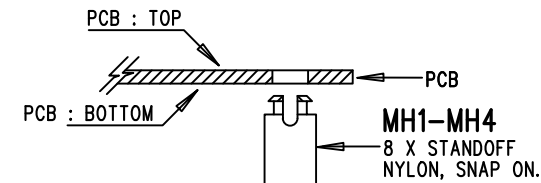


REVISION HISTORY				
ECO	REV	DESCRIPTION	APP. ENG.	DATE
-	2	PRODUCTION	GUY H.	04-14-17

NOTES: UNLESS OTHERWISE SPECIFIED

1. WORKMANSHIP SHALL BE IN ACCORDANCE WITH IPC-A-610.
2. ASSEMBLY PROCESS SHALL INCLUDE: REFLOW SOLDER TOP SIDE SMD. MAXIMUM SOLDER TEMPERATURE IS 240 DEGREES CELSIUS.
3. PARTS TO OMIT WILL BE SPECIFIED ON THE BILL OF MATERIALS. LOCATIONS OF OMITTED PARTS SHALL BE FREE OF SOLDER. MASK THE SOLDER STENCIL WHERE SMT PARTS ARE OMITTED.
4. INSTALL SHUNTS AS SHOWN.
5. DEPANELIZE BOARDS AFTER ASSEMBLY AND ROUTE-OUT THE BREAKOUT TABS ON FOUR SIDES OF THE BOARD EDGE.
6. DO NOT APPLY ANY KIND OF ASSEMBLY STAMP OR QA STAMP TO ANY BOARD.
7. INSTALL STANDOFFS AS SHOWN BELOW:



8. MARK EACH SUFFIX, ASSEMBLY TYPE, NUMBERS OF -CHANNEL, NUMBER OF -BIT AND KSPS RATE IN THE WHITE BLOCK AREAS WITH BLACK PERMANENT MARKER AS SHOWN IN TABLE BELOW:

ASSY TYPE	U1	SUFFIX	-BIT	Ksps	-CHANNEL
-A	LTC2358-18	58-18	18	200	8
-B	LTC2357-18	57-18	18	350	4
-C	LTC2353-18	53-18	18	550	2
-D	LTC2333-18	33-18	18	800	8
-E	LTC2358-16	58-16	16	200	8
-F	LTC2357-16	57-16	16	350	4
-G	LTC2353-16	53-16	16	550	2
-H	LTC2333-16	33-16	16	800	8

APPROVALS

PCB DES. KIM T.
APP ENG. GUY H.



1630 MCCARTHY BLVD
MILPITAS, CA 95035
PH: (408)432-1900
www.linear.com
LTC CONFIDENTIAL-
FOR CUSTOMER USE ONLY

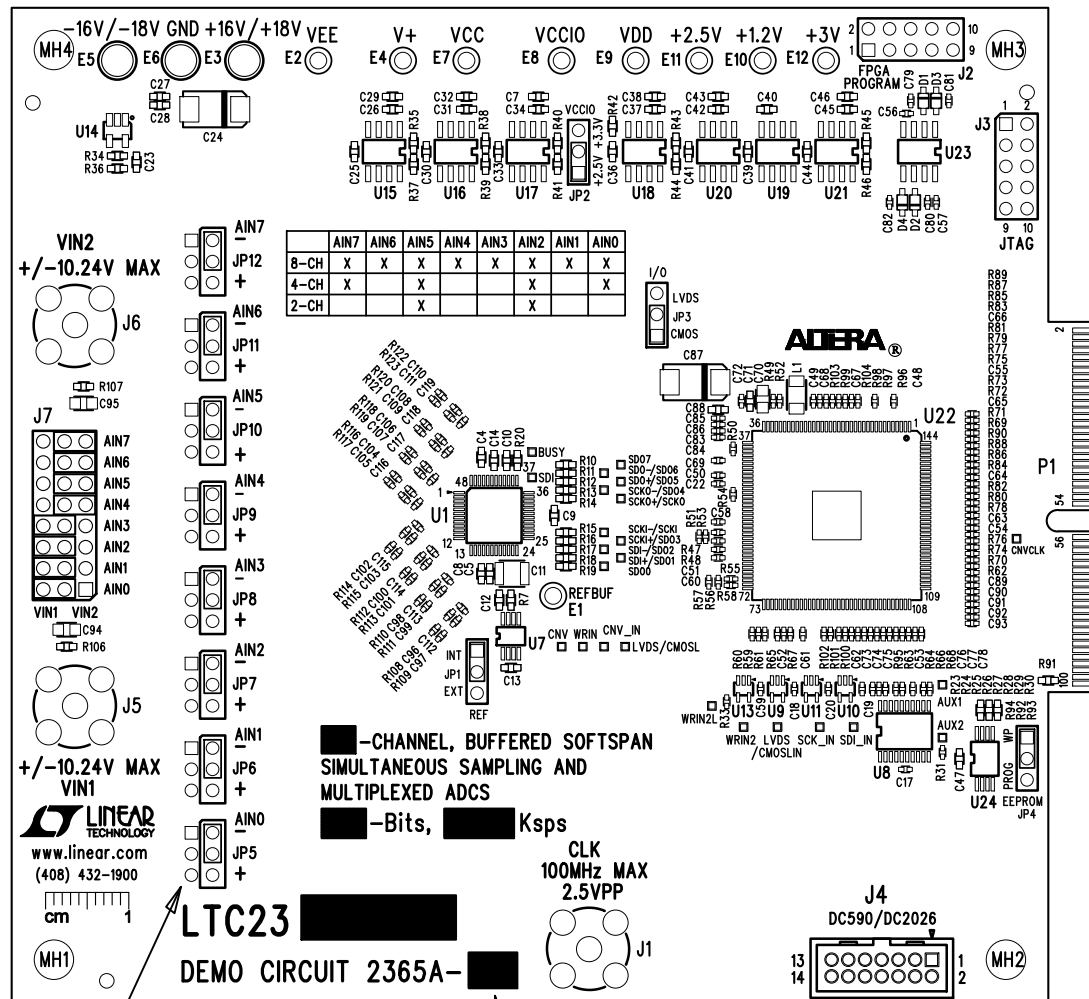
TITLE: TOP ASSEMBLY DRAWING
8/4/2-CHANNEL, BUFFERED SOFTSPAN
SIMULTANEOUS SAMPLING AND MULTIPLEXED ADCS

SIZE IC NO. LTC23XXILX FAMILY
N/A DEMO CIRCUIT 2365A

SCALE = NONE

FILENAME: DC2365A-2.PCB

SHT 1 OF 2



9. INSTALL HD1X3-100 WITH SHUNTS ON JP5 TO JP12 AS SHOWN.