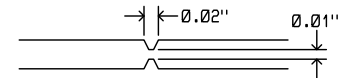


REVISION HISTORY

ECO	REV	DESCRIPTION	APPROVED	DATE
-	2	2ND PROTOTYPE	KEITH B.	7-10-15

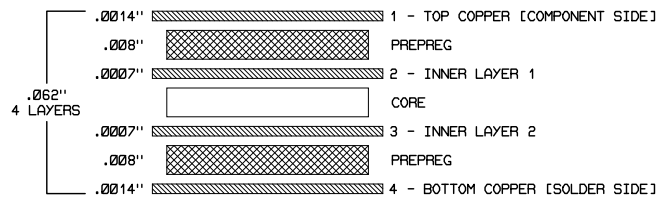
NOTES: UNLESS OTHERWISE SPECIFIED


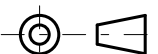
- FAB PER IPC-A-600
- MATERIAL: -LEAD FREE ASSEMBLY COMPLIANT, ISOLA FR-370HA or EQUIVALENT
-FINISHED THICKNESS TO BE $0.062'' \pm .005''$
-TOTAL OF 4 LAYERS WITH 1 OZ. CU ON THE OUTER LAYERS
AND 0.5 OZ. CU ON THE INNER LAYERS
-FLAMMABILITY RATING: 94v-0 MINIMUM
- SIZE: CUT TO DIMENSIONS AND TOLERANCES SHOWN
- DRILLING: -DRILL HOLES PER SCHEDULE. PLATE THROUGH HOLES WITH COPPER, $0.001''$ THICK MIN.
-ALL HOLE SIZES ARE SPECIFIED AFTER PLATING
-HOLE LOCATION TOLERANCES ARE $\pm 0.003''$ IN RELATION TO CENTER
- FINISH: -SMOBC USING LPI BOTH SIDES, COLOR GREEN MATTE
-GOLD IMMERSION (ENIG) BOTH SIDES
-SILKSCREEN TOP AND BOTTOM SIDES USE WHITE NON-CONDUCTIVE INK
- DO NOT ALTER ARTWORK e.g. TO ADD LOGO OR DATE CODE
PAD SIZE MAY BE MODIFIED TO MEET END FINISH
- PCBs ARE TO BE RoHS COMPLIANT
- SCORING FOR PANELIZED PCB:



SIZE	QTY	SYM	PLATED	TOL
$0.010''$	132	+	YES	$\pm 0.003''$
$0.015''$	32	o	YES	$\pm 0.003''$
$0.040''$	80	x	YES	$\pm 0.003''$
$0.050''$	3	*	YES	$\pm 0.003''$
$0.070''$	2	⊕	NO	$\pm 0.003''$
$0.096''$	3	⊗	YES	$\pm 0.003''$

LAYER STRUCTURE



UNLESS OTHERWISE SPECIFIED		APPROVALS		 <div>1630 McCarthy Blvd. Milpitas, CA 95035 Phone: (408) 432-1900 Fax: (408) 434-0507 www.linear.com</div>		LTC CONFIDENTIAL FOR CUSTOMER USE ONLY	
<div>DIMENSIONS ARE IN INCHES TOLERANCES: 0.XX" = +/- 0.01" 0.XXX" = +/- 0.005" INTERPRET DIM AND TOL PER ASME Y14.5M-1994</div>		PCB DES.	KEITH B.				
		APP ENG.	KEITH B.	TITLE: FABRICATION DRAWING Two Wire RS485/RS232 Transceiver with Switchable Termination			
		THIRD ANGLE PROJECTION				SIZE	IC NO.
				N/A	LTC2873IUFD DEMO CIRCUIT 2364A		2
		SCALE = 1:1		DATE: Friday July 10, 2015			SHEET 1 OF 1