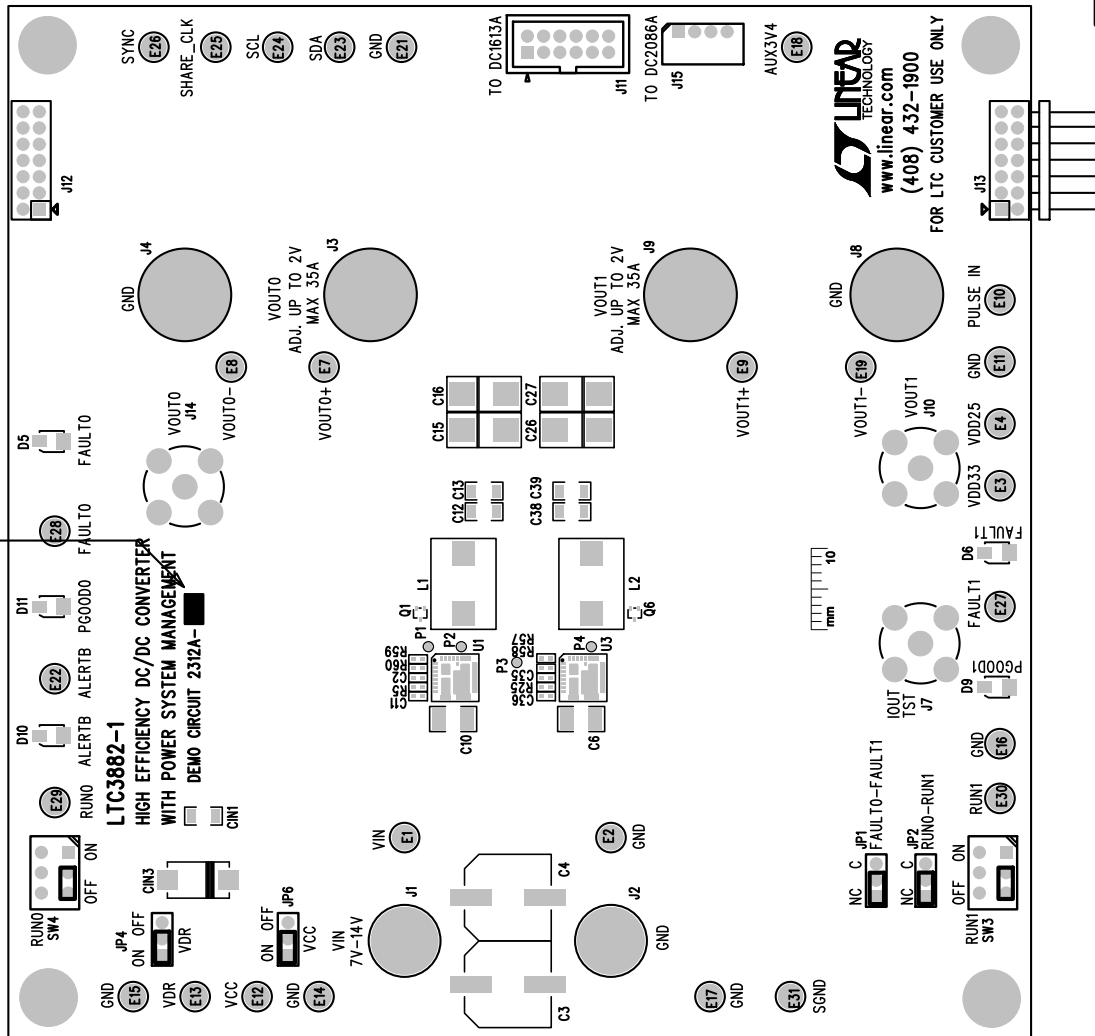
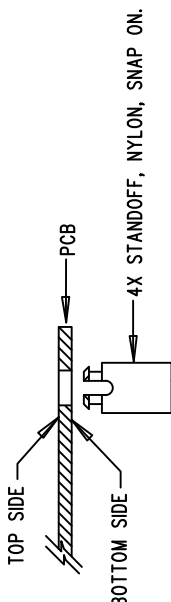


REVISION HISTORY			
ECO	REV	DESCRIPTION	APP. ENG.
-	1	PRODUCTION	HAORAN W.
			DATE
			8-14-15




NOTES: UNLESS OTHERWISE SPECIFIED

1. WORKMANSHIP SHALL BE IN ACCORDANCE WITH IPC-A-610.
2. ASSEMBLY PROCESS SHALL INCLUDE: REFLOW SOLDER TOP SIDE SMD. MAXIMUM SOLDER TEMPERATURE IS 240 DEGREES CELSIUS.
3. PARTS TO OMIT WILL BE SPECIFIED ON THE BILL OF MATERIALS. LOCATIONS OF OMITTED PARTS SHALL BE FREE OF SOLDER. MASK THE SOLDER STENCIL WHERE SMT PARTS ARE OMITTED.
4. INSTALL SHUNTS AS SHOWN ON ASSY DRAWING.
5. DEPANELIZE BOARDS AFTER ASSEMBLY AND ROUTE-OUT THE BREAKOUT TABS ON FOUR SIDES OF THE BOARD EDGE.
6. DO NOT APPLY ANY KIND OF ASSEMBLY STAMP OR QA STAMP TO ANY BOARD.
7. INSTALL 4 STANDOFFS AT 4 LOCATIONS AS SHOWN BELOW:



8. SEE THE BILL OF MATERIALS TO MARK THE APPROPRIATE ASSEMBLY TYPE WITH BLACK PERMANENT MARKER.

APPROVALS		 <b>LINEAR</b> TECHNOLOGY				1630 MCCARTHY BLVD MILPITAS, CA 95035 PH: (408)432-1900 www.linear.com E1C CONFIDENTIAL USE FOR CUSTOMER USE ONLY	
PCB DES.	HZ	TITLE: TOP ASSEMBLY DRAWING  HIGH EFFICIENCY DC/DC CONVERTER WITH POWER SYSTEM MANAGEMENT					
APP ENG.	HAORAN W.						
		SIZE	IC NO.	LTC3882EUJ-1	REV.		
		N/A	DEMO CIRCUIT 2312A-A/B		1		
SCALE = NONE		FILENAME: DC2312A-1.PCB				SHT 1 OF 2	

1630 MCCARTHY BLVD  
MILPITAS, CA 95035  
PH: (408) 432-1900  
www.linear.com  
LTC CONFIDENTIAL -  
FOR CUSTOMER USE ONLY