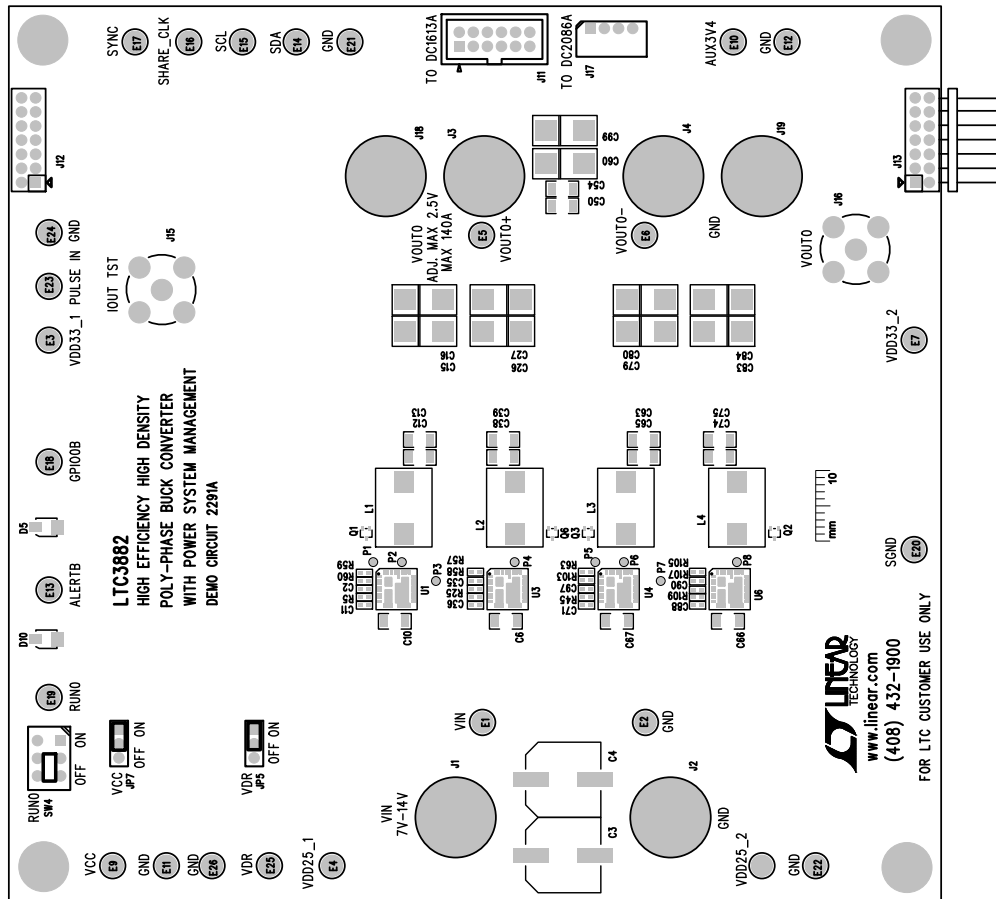
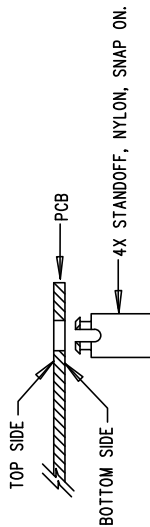



ECO	REV	DESCRIPTION	APP. ENG.	DATE
-	2	PRODUCTION	HAORAN W.	11-17-15

NOTES: UNLESS OTHERWISE SPECIFIED

1. WORKMANSHIP SHALL BE IN ACCORDANCE WITH IPC-A-610.
2. ASSEMBLY PROCESS SHALL INCLUDE: REFLOW SOLDER TOP SIDE SMD. MAXIMUM SOLDER TEMPERATURE IS 240 DEGREES CELSIUS.
3. PARTS TO OMIT WILL BE SPECIFIED ON THE BILL OF MATERIALS. LOCATIONS OF OMITTED PARTS SHALL BE FREE OF SOLDER. MASK THE SOLDER STENCIL WHERE SMT PARTS ARE OMITTED.
4. INSTALL SHUNTS AS SHOWN ON ASSY DRAWING.
5. DEPANELIZE BOARDS AFTER ASSEMBLY AND ROUTE-OUT THE BREAKOUT TABS ON FOUR SIDES OF THE BOARD EDGE.
6. DO NOT APPLY ANY KIND OF ASSEMBLY STAMP OR QA STAMP TO ANY BOARD.
7. INSTALL 4 STANDOFFS AT 4 LOCATIONS AS SHOWN BELOW:



APPROVALS		 LINEAR TECHNOLOGY		4330 MCARDY BLVD MURFreesboro, TN 37132 PH: (615) 891-9000 WWW.LINEAR.COM LTC CONFIDENTIAL - FOR CUSTOMER USE ONLY	
POB DES.	HZ				
APP ENG.	HAORAN W.				
		TITLE: TOP ASSEMBLY DRAWING HIGH EFFICIENCY HIGH DENSITY POLY-PHASE BUCK STEP DOWN CONVERTER WITH POWER SYSTEM MANAGEMENT			
		SIZE	IC NO.	LTC3882EJ	REV.
		N/A		DEMO CIRCUIT 2291A	2
SCALE = NONE		FILENAME: DC2291A-2.PCB			SHT 1 OF 2