

ALL PARTS ON THIS PAGE ARE FOR DEMO BOARD ONLY, NOT NEEDED IN CUSTOMER DESIGN

Power Management Section:

- U2:** 24LC025-I/ST (EEPROM) connected to 3V3 and GND.
- U3:** LT1129CS8-5 (Voltage Detector) monitoring VIN.
- Q12, Q13:** 2N7002A MOSFETs for GPIO0B and GPIO1B.
- Q14:** TP0101K MOSFET for ALERTB.
- Q15:** RJK0305DPB MOSFET for the dynamic load circuit.

Control Logic Section:

- J10:** Connector for AUXP, SDA, SCL, LCKPWR, ALERTB, GPIO_1, OUTEN_0, OUTEN_1, GND, AUXSCL, AUXSDA.
- J7:** DEMO HEADER (F) with pins for FAULTB, CTRL, ALERTB, SDA, SHARE_CLK, SCL, RESETB, AUXP, UNUSED, GND, 12V, 12V.
- J8:** DEMO HEADER (M) with pins for FAULTB, CTRL, ALERTB, SDA, SHARE_CLK, SCL, RESETB, AUXP, UNUSED, GND, 12V, 12V.
- TP17:** GND test point.
- TP18:** PULSE IN test point.
- TP19, TP20, TP21:** SYNC test points.
- TP22:** ALERTB test point.
- TP5:** SDA test point.
- TP6:** SCL test point.
- TP8:** SGND test point.
- TP11, TP12:** GPIO1B, GPIO0B test points.
- TP13, TP14:** RUN0, RUN1 test points.

Dynamic Load Circuit:

- Q15:** RJK0305DPB MOSFET.
- R58:** 10K resistor.
- R68:** 0.01 2512 resistor.
- C54:** 1uF 0805 capacitor.
- J9:** IOUT TST connector.
- NOTE:** PULSE OUT 10mV / AMP.

Customer Notice:

LINEAR TECHNOLOGY HAS MADE A BEST EFFORT TO DESIGN A CIRCUIT THAT MEETS CUSTOMER-SUPPLIED SPECIFICATIONS; HOWEVER, IT REMAINS THE CUSTOMER'S RESPONSIBILITY TO VERIFY PROPER AND RELIABLE OPERATION IN THE ACTUAL APPLICATION. COMPONENT SUBSTITUTION AND PRINTED CIRCUIT BOARD LAYOUT MAY SIGNIFICANTLY AFFECT CIRCUIT PERFORMANCE OR RELIABILITY. CONTACT LINEAR TECHNOLOGY APPLICATIONS ENGINEERING FOR ASSISTANCE.

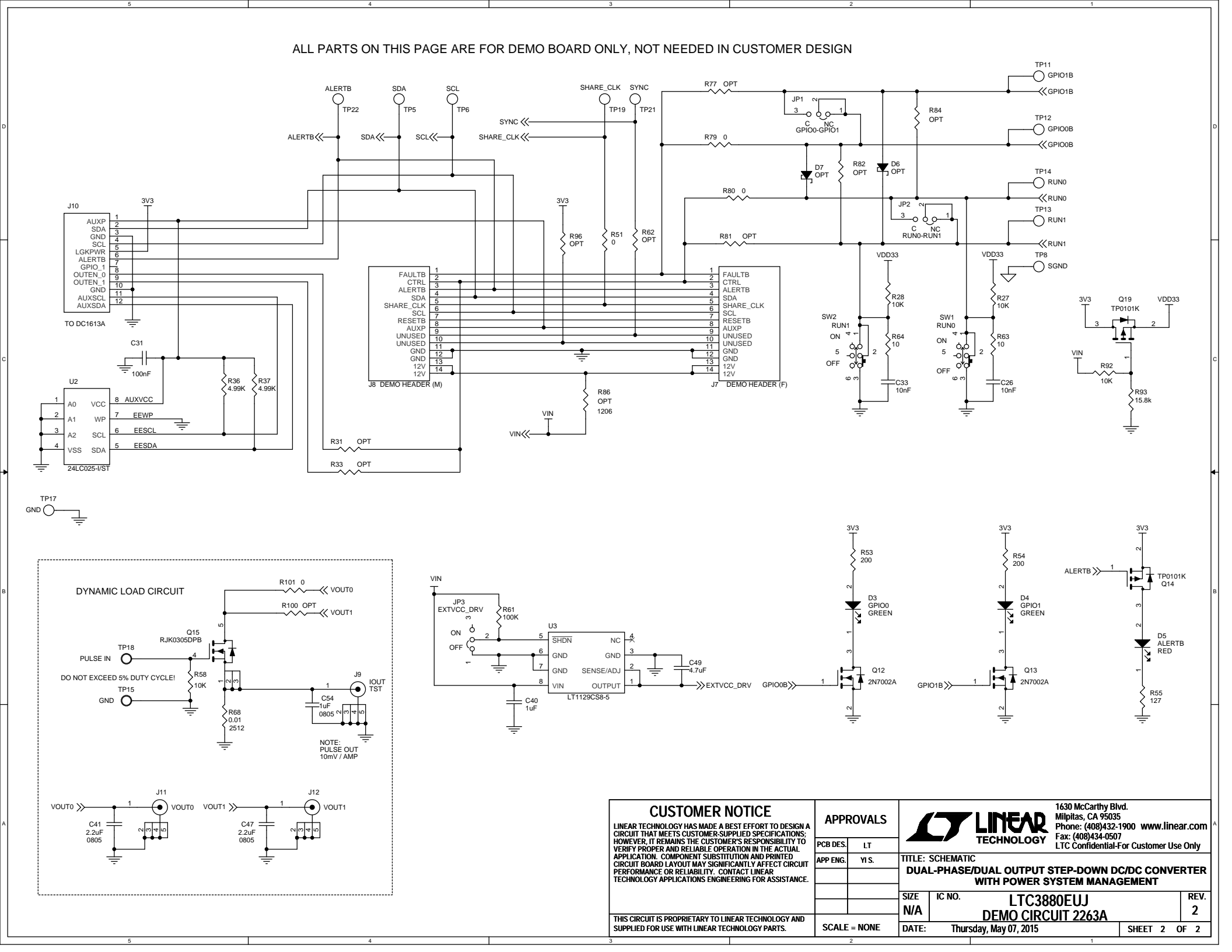
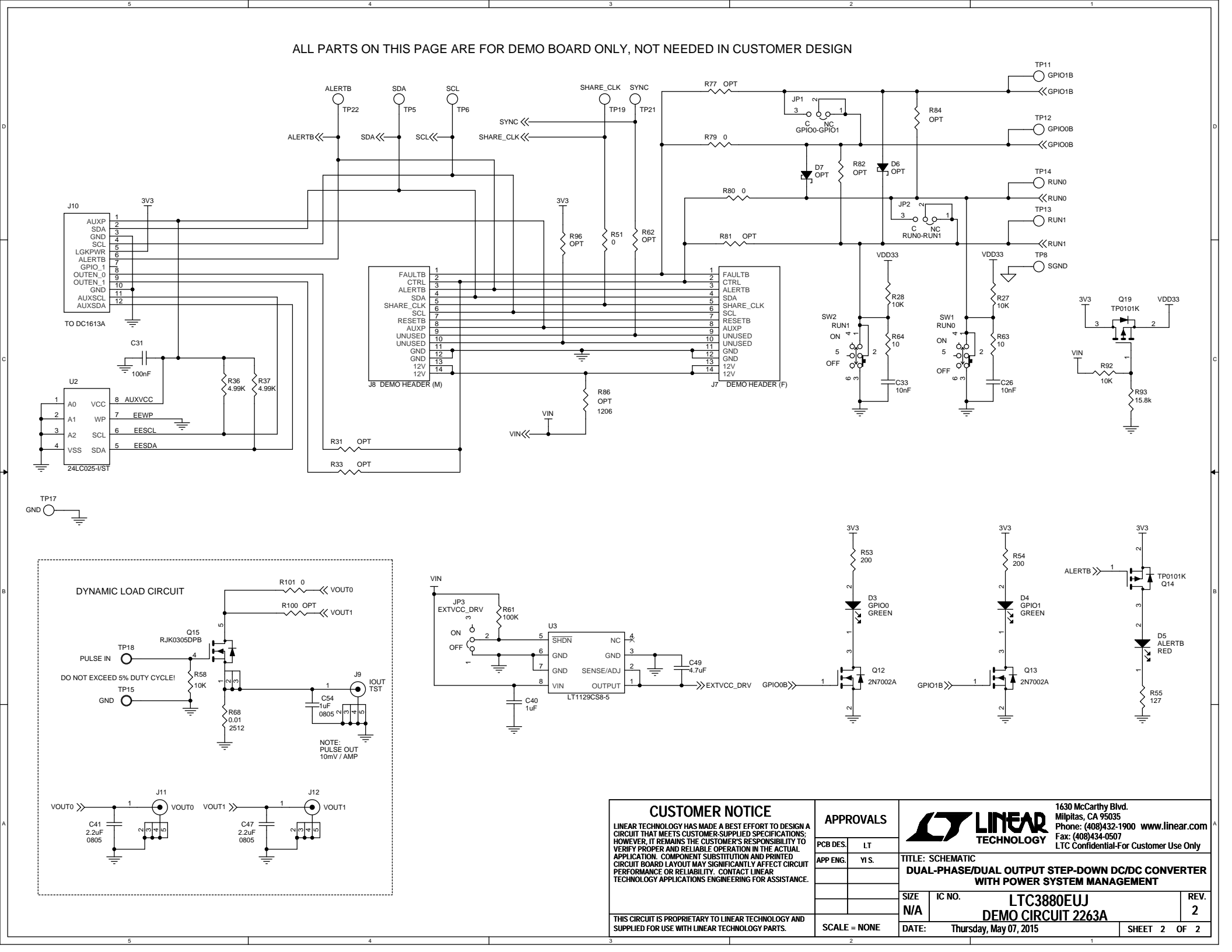
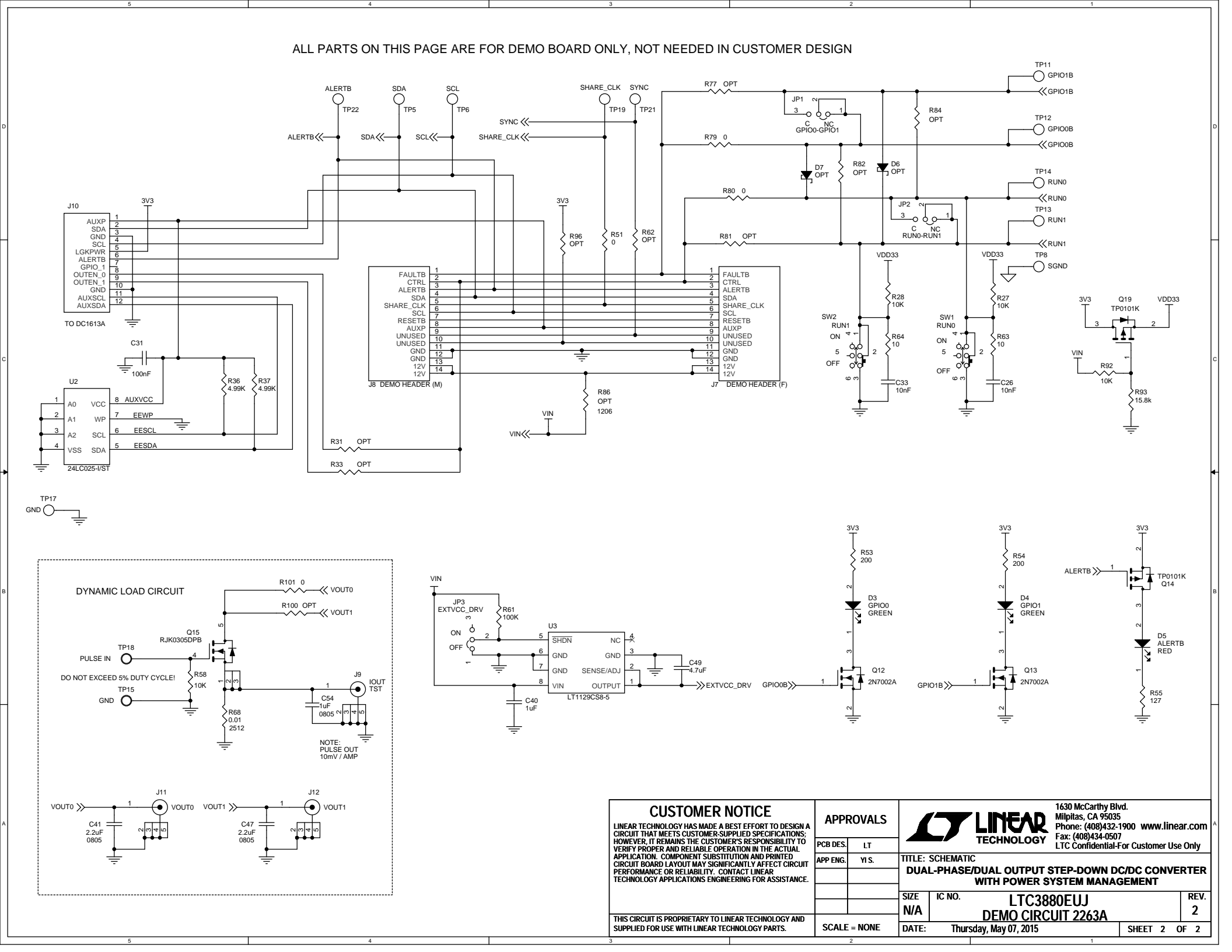
Approvals:

PCB DES.	LT
APP ENG.	YI S.


Title: SCHEMATIC
DUAL-PHASE/DUAL OUTPUT STEP-DOWN DC/DC CONVERTER WITH POWER SYSTEM MANAGEMENT

Size: N/A
IC NO.: LTC3880EUJ
REV.: 2

DATE: Thursday, May 07, 2015
SHEET 2 OF 2





<h2 style="text-align: center;">CUSTOMER NOTICE</h2> <p>LINEAR TECHNOLOGY HAS MADE A BEST EFFORT TO DESIGN A CIRCUIT THAT MEETS CUSTOMER-SUPPLIED SPECIFICATIONS; HOWEVER, IT REMAINS THE CUSTOMER'S RESPONSIBILITY TO VERIFY PROPER AND RELIABLE OPERATION IN THE ACTUAL APPLICATION. COMPONENT SUBSTITUTION AND PRINTED CIRCUIT BOARD LAYOUT MAY SIGNIFICANTLY AFFECT CIRCUIT PERFORMANCE OR RELIABILITY. CONTACT LINEAR TECHNOLOGY APPLICATIONS ENGINEERING FOR ASSISTANCE.</p>		<h3 style="text-align: center;">APPROVALS</h3> <table border="1" style="width: 100%;"> <tr> <td style="width: 50%;">PCB DES.</td> <td style="width: 50%;">LT</td> </tr> <tr> <td>APP ENG.</td> <td>YI.S.</td> </tr> <tr> <td> </td> <td> </td> </tr> <tr> <td> </td> <td> </td> </tr> <tr> <td> </td> <td> </td> </tr> </table>		PCB DES.	LT	APP ENG.	YI.S.							<div style="display: flex; align-items: center;"> <div> <p>LINEAR TECHNOLOGY</p> </div> </div>		<p>1630 McCarthy Blvd. Milpitas, CA 95035 Phone: (408)432-1900 www.linear.com Fax: (408)434-0507 LTC Confidential-For Customer Use Only</p>	
PCB DES.	LT																
APP ENG.	YI.S.																
<p>THIS CIRCUIT IS PROPRIETARY TO LINEAR TECHNOLOGY AND SUPPLIED FOR USE WITH LINEAR TECHNOLOGY PARTS.</p>		<p>TITLE: SCHEMATIC DUAL-PHASE/DUAL OUTPUT STEP-DOWN DC/DC CONVERTER WITH POWER SYSTEM MANAGEMENT</p>		<table border="1" style="width: 100%;"> <tr> <td style="width: 20%;">SIZE N/A</td> <td style="width: 40%;">IC NO. LTC3880EIJ</td> <td style="width: 40%;">REV. 2</td> </tr> </table>		SIZE N/A	IC NO. LTC3880EIJ	REV. 2									
SIZE N/A	IC NO. LTC3880EIJ	REV. 2															
<p>SCALE = NONE</p>		<p>DATE: Thursday, May 07, 2015</p>		<p>SHEET 2 OF 2</p>													


<h2 style="text-align: center;">CUSTOMER NOTICE</h2> <p>LINEAR TECHNOLOGY HAS MADE A BEST EFFORT TO DESIGN A CIRCUIT THAT MEETS CUSTOMER-SUPPLIED SPECIFICATIONS; HOWEVER, IT REMAINS THE CUSTOMER'S RESPONSIBILITY TO VERIFY PROPER AND RELIABLE OPERATION IN THE ACTUAL APPLICATION. COMPONENT SUBSTITUTION AND PRINTED CIRCUIT BOARD LAYOUT MAY SIGNIFICANTLY AFFECT CIRCUIT PERFORMANCE OR RELIABILITY. CONTACT LINEAR TECHNOLOGY APPLICATIONS ENGINEERING FOR ASSISTANCE.</p>	APPROVALS		 LINEAR TECHNOLOGY	1630 McCarthy Blvd. Milpitas, CA 95035 Phone: (408)432-1900 www.linear.com Fax: (408)434-0507 LTC Confidential-For Customer Use Only		
	PCB DES.	LT		TITLE: SCHEMATIC DUAL-PHASE/DUAL OUTPUT STEP-DOWN DC/DC CONVERTER WITH POWER SYSTEM MANAGEMENT		
	APP ENG.	YI.S.				
THIS CIRCUIT IS PROPRIETARY TO LINEAR TECHNOLOGY AND SUPPLIED FOR USE WITH LINEAR TECHNOLOGY PARTS.	SCALE = NONE		SIZE N/A	IC NO. LTC3880EIJ DEMO CIRCUIT 2263A	REV. 2	
			DATE: Thursday, May 07, 2015	SHEET 2 OF 2		


<h2 style="text-align: center;">CUSTOMER NOTICE</h2> <p>LINEAR TECHNOLOGY HAS MADE A BEST EFFORT TO DESIGN A CIRCUIT THAT MEETS CUSTOMER-SUPPLIED SPECIFICATIONS; HOWEVER, IT REMAINS THE CUSTOMER'S RESPONSIBILITY TO VERIFY PROPER AND RELIABLE OPERATION IN THE ACTUAL APPLICATION. COMPONENT SUBSTITUTION AND PRINTED CIRCUIT BOARD LAYOUT MAY SIGNIFICANTLY AFFECT CIRCUIT PERFORMANCE OR RELIABILITY. CONTACT LINEAR TECHNOLOGY APPLICATIONS ENGINEERING FOR ASSISTANCE.</p>		<h3 style="text-align: center;">APPROVALS</h3> <table border="1" style="width: 100%;"> <tr> <td style="width: 50%;">PCB DES.</td> <td style="width: 50%;">LT</td> </tr> <tr> <td>APP ENG.</td> <td>YLS.</td> </tr> <tr> <td> </td> <td> </td> </tr> <tr> <td> </td> <td> </td> </tr> <tr> <td> </td> <td> </td> </tr> </table>		PCB DES.	LT	APP ENG.	YLS.							<div style="display: flex; align-items: center;"> <div> <p>LINEAR TECHNOLOGY</p> </div> </div>		<p>1630 McCarthy Blvd. Milpitas, CA 95035 Phone: (408)432-1900 www.linear.com Fax: (408)434-0507 LTC Confidential-For Customer Use Only</p>	
PCB DES.	LT																
APP ENG.	YLS.																
<p>THIS CIRCUIT IS PROPRIETARY TO LINEAR TECHNOLOGY AND SUPPLIED FOR USE WITH LINEAR TECHNOLOGY PARTS.</p>		<p>SCALE = NONE</p>		<p>TITLE: SCHEMATIC DUAL-PHASE/DUAL OUTPUT STEP-DOWN DC/DC CONVERTER WITH POWER SYSTEM MANAGEMENT</p>													
		<p>SIZE N/A</p>		<p>IC NO. LTC3880EJJ</p>													
		<p>DATE: Thursday, May 07, 2015</p>		<p>REV. 2</p>													
				<p>DEMO CIRCUIT 2263A</p>													
				<p>SHEET 2 OF 2</p>													


<h2 style="text-align: center;">CUSTOMER NOTICE</h2> <p>LINEAR TECHNOLOGY HAS MADE A BEST EFFORT TO DESIGN A CIRCUIT THAT MEETS CUSTOMER-SUPPLIED SPECIFICATIONS; HOWEVER, IT REMAINS THE CUSTOMER'S RESPONSIBILITY TO VERIFY PROPER AND RELIABLE OPERATION IN THE ACTUAL APPLICATION. COMPONENT SUBSTITUTION AND PRINTED CIRCUIT BOARD LAYOUT MAY SIGNIFICANTLY AFFECT CIRCUIT PERFORMANCE OR RELIABILITY. CONTACT LINEAR TECHNOLOGY APPLICATIONS ENGINEERING FOR ASSISTANCE.</p>		<h3 style="text-align: center;">APPROVALS</h3> <table border="1" style="width: 100%;"> <tr> <td style="width: 50%;">PCB DES.</td> <td style="width: 50%;">LT</td> </tr> <tr> <td>APP ENG.</td> <td>YLS.</td> </tr> <tr> <td> </td> <td> </td> </tr> <tr> <td> </td> <td> </td> </tr> <tr> <td> </td> <td> </td> </tr> </table>		PCB DES.	LT	APP ENG.	YLS.							<div style="display: flex; align-items: center;"> <div> <p>LINEAR TECHNOLOGY</p> </div> </div>		<p>1630 McCarthy Blvd. Milpitas, CA 95035 Phone: (408)432-1900 www.linear.com Fax: (408)434-0507 LTC Confidential-For Customer Use Only</p>	
PCB DES.	LT																
APP ENG.	YLS.																
<p>THIS CIRCUIT IS PROPRIETARY TO LINEAR TECHNOLOGY AND SUPPLIED FOR USE WITH LINEAR TECHNOLOGY PARTS.</p>		<p>SCALE = NONE</p>		<p>TITLE: SCHEMATIC DUAL-PHASE/DUAL OUTPUT STEP-DOWN DC/DC CONVERTER WITH POWER SYSTEM MANAGEMENT</p>													
		<p>SIZE N/A</p>		<p>IC NO. LTC3880EJJ</p>													
		<p>DATE: Thursday, May 07, 2015</p>		<p>REV. 2</p>													
				<p>DEMO CIRCUIT 2263A</p>													
				<p>SHEET 2 OF 2</p>													


 LINEAR TECHNOLOGY	Milpitas, CA 95035 Phone: (408)432-1900 www.linear.com Fax: (408)434-0507 LTC Confidential-For Customer Use Only	
	TITLE: SCHEMATIC DUAL-PHASE/DUAL OUTPUT STEP-DOWN DC/DC CONVERTER WITH POWER SYSTEM MANAGEMENT	
SIZE N/A	IC NO. LTC3880EUJ DEMO CIRCUIT 2263A	REV. 2
DATE: Thursday, May 07, 2015		SHEET 2 OF 2

 LINEAR TECHNOLOGY	Milpitas, CA 95035 Phone: (408)432-1900 www.linear.com Fax: (408)434-0507 LTC Confidential-For Customer Use Only	
	TITLE: SCHEMATIC DUAL-PHASE/DUAL OUTPUT STEP-DOWN DC/DC CONVERTER WITH POWER SYSTEM MANAGEMENT	
SIZE N/A	IC NO. LTC3880EUJ DEMO CIRCUIT 2263A	REV. 2
DATE: Thursday, May 07, 2015		SHEET 2 OF 2

 LINEAR TECHNOLOGY	Milpitas, CA 95035 Phone: (408)432-1900 www.linear.com Fax: (408)434-0507 LTC Confidential-For Customer Use Only	
	TITLE: SCHEMATIC DUAL-PHASE/DUAL OUTPUT STEP-DOWN DC/DC CONVERTER WITH POWER SYSTEM MANAGEMENT	
SIZE N/A	IC NO. LTC3880EUJ DEMO CIRCUIT 2263A	REV. 2
DATE: Thursday, May 07, 2015		SHEET 2 OF 2

 LINEAR TECHNOLOGY	Milpitas, CA 95035 Phone: (408)432-1900 www.linear.com Fax: (408)434-0507 LTC Confidential-For Customer Use Only	
	TITLE: SCHEMATIC DUAL-PHASE/DUAL OUTPUT STEP-DOWN DC/DC CONVERTER WITH POWER SYSTEM MANAGEMENT	
SIZE N/A	IC NO. LTC3880EUJ DEMO CIRCUIT 2263A	REV. 2
DATE: Thursday, May 07, 2015		SHEET 2 OF 2

 LINEAR TECHNOLOGY	Milpitas, CA 95035 Phone: (408)432-1900 www.linear.com Fax: (408)434-0507 LTC Confidential-For Customer Use Only	
	TITLE: SCHEMATIC DUAL-PHASE/DUAL OUTPUT STEP-DOWN DC/DC CONVERTER WITH POWER SYSTEM MANAGEMENT	
SIZE N/A	IC NO. LTC3880EUJ DEMO CIRCUIT 2263A	REV. 2
DATE: Thursday, May 07, 2015		SHEET 2 OF 2

 LINEAR TECHNOLOGY	Milpitas, CA 95035 Phone: (408)432-1900 www.linear.com Fax: (408)434-0507 LTC Confidential-For Customer Use Only	
	TITLE: SCHEMATIC DUAL-PHASE/DUAL OUTPUT STEP-DOWN DC/DC CONVERTER WITH POWER SYSTEM MANAGEMENT	
SIZE N/A	IC NO. LTC3880EUJ DEMO CIRCUIT 2263A	REV. 2
DATE: Thursday, May 07, 2015		SHEET 2 OF 2