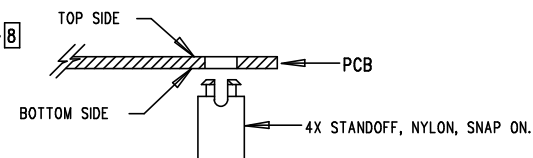


| REVISION HISTORY |     |             |           |         |
|------------------|-----|-------------|-----------|---------|
| ECO              | REV | DESCRIPTION | APP. ENG. | DATE    |
| -                | 3   | PRODUCTION  | Ryan Huff | 1-20-15 |

NOTES: UNLESS OTHERWISE SPECIFIED

1. WORKMANSHIP SHALL BE IN ACCORDANCE WITH IPC-A-610.
2. ASSEMBLY PROCESS SHALL INCLUDE: REFLOW SOLDER TOP SIDE SMD. MAXIMUM SOLDER TEMPERATURE IS 240 DEGREES CELSIUS.
3. PARTS TO OMIT WILL BE SPECIFIED ON THE BILL OF MATERIALS. LOCATIONS OF OMITTED PARTS SHALL BE FREE OF SOLDER. MASK THE SOLDER STENCIL WHERE SMT PARTS ARE OMITTED.
4. DEPANELIZE BOARDS AFTER ASSEMBLY AND ROUTE-OUT THE BREAKOUT TABS ON FOUR SIDES OF THE BOARD EDGE.
5. DO NOT APPLY ANY KIND OF ASSEMBLY STAMP OR QA STAMP TO ANY BOARD.
6. INSTALL 4 STANDOFFS AT 4 LOCATIONS AS SHOWN BELOW:




7. INSTALL D21 AS SHOWN BELOW:



8. MARK EACH ASSEMBLY TYPE, OUTPUT VOLTAGE AND CURRENT IN THE WHITE BLOCK AREAS WITH BLACK PERMANENT MARKER AS SHOWN IN TABLE BELOW:

| ASSY TYPE | VOLTAGE | CURRENT | U1      |
|-----------|---------|---------|---------|
| -A        | 5V      | 13A     | LT4276A |
| -B        | 12V     | 7A      | LT4276A |

## APPROVALS

|              |           |  |  |           |
|--------------|-----------|--|--|-----------|
| PCB DES.     | Ryan Huff |  <div><b>LINEAR</b><br/><b>TECHNOLOGY</b></div> <div><a href="http://www.linear.com">www.linear.com</a><br/>LTC CONFIDENTIAL—<br/>FOR CUSTOMER USE ONLY</div> |  |           |
| APP ENG.     | Ryan Huff |  |  |           |
|              |           | TITLE: TOP ASSEMBLY DRAWING<br>HIGH EFFICIENCY LTPOE++ PD INTERFACE<br>WITH INTEGRATED SWITCHING REGULATOR   |  |           |
|              |           | SIZE<br>N/A  | IC NO. LT4276AIUFD<br>DEMO CIRCUIT 2262A | REV.<br>3 |
| SCALE = NONE |           | FILENAME: DC2262A - FORWARD.pcb SHT 1 OF 2   |  |           |



1630 MCCARTHY BLVD  
MILPITAS, CA 95035  
PH: (408)432-1900  
www.linear.com  
LTC CONFIDENTIAL-  
FOR CUSTOMER USE ONLY