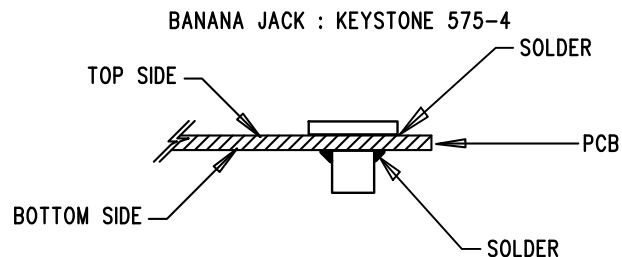
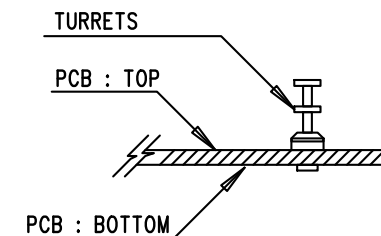
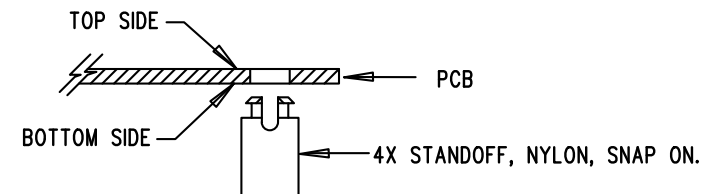


NOTES: UNLESS OTHERWISE SPECIFIED

1. WORKMANSHIP SHALL BE IN ACCORDANCE WITH IPC-A-610.
MAXIMUM SOLDER TEMPERATURE IS 240 DEG C.
2. ASSEMBLY PROCESS SHALL INCLUDE: REFLOW SOLDER TOP SIDE SMD.
3. PARTS TO OMIT WILL BE SPECIFIED ON THE BILL OF MATERIALS.
LOCATIONS OF OMITTED PARTS SHALL BE FREE OF SOLDER.
MASK THE SOLDER STENCIL WHERE SMT PARTS ARE OMITTED.
4. INSTALL SHUNTS AS SHOWN ON ASSY DRAWING.
5. DEPANELIZE BOARDS AFTER ASSEMBLY AND ROUTE-OUT THE
BREAKOUT TABS ON FOUR SIDES OF THE BOARD EDGE.
6. DO NOT APPLY ANY KIND OF ASSEMBLY STAMP OR QA STAMP
TO ANY BOARD.
7. INSTALL 4 STANDOFFS AT 4 LOCATIONS AS SHOWN BELOW:



		1630 MCCARTHY BLVD MILPITAS, CA 95035 PH: (408)432-1900 www.linear.com LTC CONFIDENTIAL- FOR CUSTOMER USE ONLY	
		TITLE: TOP ASSEMBLY DRAWING 58VIN, 6A CVCC STEP-DOWN μ MODULE REGULATOR	
SIZE N/A	IC NO. LTM8064EY DEMO CIRCUIT 2237A	REV. 2	
FILENAME: DC2237A-2.PCB		SHT 1 OF 2	