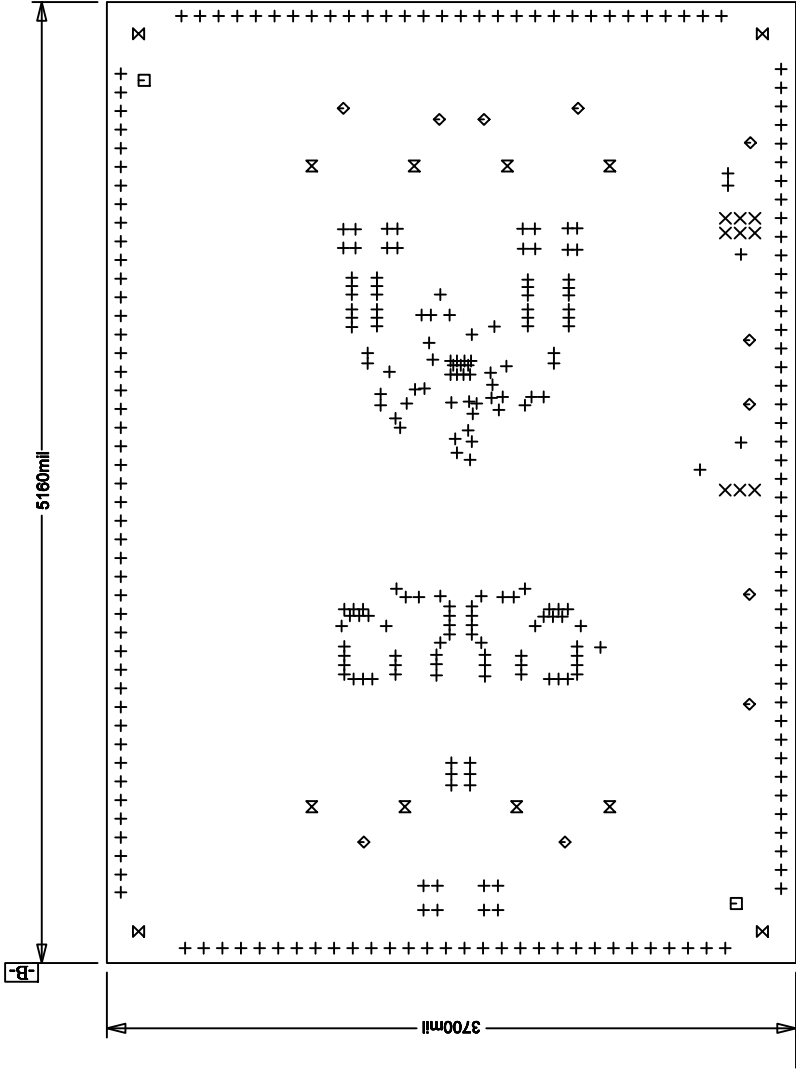


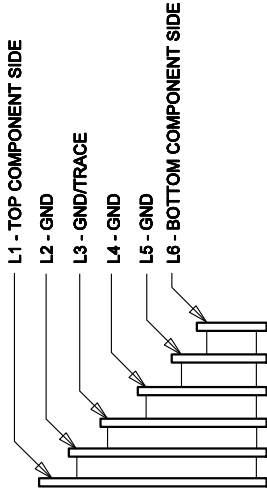
| REVISION HISTORY | | | |
|------------------|-----|-------------|----------|
| ECO | REV | DESCRIPTION | DATE |
| | 1 | PRODUCTION | 06/20/14 |
| VICTOR K. | | | APPROVED |



TOP COMPONENT SIDE SHOWN

| SIZE | QTY | SYM | PLATED | TOL |
|------|-----|-----|--------|----------|
| 10 | 319 | + | YES | +/-0.08 |
| 35 | 9 | X | YES | +/-0.08 |
| 70 | 2 | □ | NO | +/-0.005 |
| 94 | 11 | ◇ | YES | +/-0.005 |
| 187 | 4 | ⊗ | NO | +/-0.005 |
| 209 | 8 | ⊗ | YES | +/-0.005 |

LAYER CONSTRUCTION

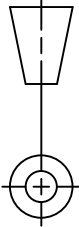


NOTES: UNLESS OTHERWISE SPECIFIED,

- ARTWORK P/N DC2236A REV 2.
- FAB PER IPC-A-800
- PCB SHALL MEET RoHS COMPLIANCE.
- MATERIAL:
 - LAMINATE: LEAD FREE COMPLIANT, ISOLA FR-370HR OR EQUIVALENT.
FLAMMABILITY RATING: 94 V-2 MINIMUM .
 - THICKNESS: .080 +/- .005
 - CLAD: 2 OZ. (50um) EXTERNAL LAYERS.
1 OZ. (25um) COPPER ON TWO INTERNAL LAYERS.
- FINISH:
 - COATING: SOLDERMASK OVER BARE COPPER, COLOR, GREEN LPI.
 - PLATING: GOLD IMMERSION BOTH SIDES.
 - SILKSCREEN: BOTH SIDES WITH WHITE NON-CONDUCTIVE INK.
- TOLERANCES:
 - WARPAGE: (0.004) MAX. ALONG THE LONGEST DIAG. AS PER IPC-TM650 METHOD 2.4.22.
 - ETCHING: +0.002, -0.002 OF MASTER PATTERN.
 - REGISTRATION: 0.004 MAX.
 - MASK THICKNESS: 0.001 MIN., 0.004 MAX.
 - HOLE PLATING: 22um +/- 3um.
- SIZE:
 - CUT TO DIMENSIONS AND TOLERANCES SHOWN. 0.00 ARE PRIMARY DATUMS.
- HOLE DIAMETERS ARE POST-PLATED SIZES.
- DEBURR AND BREAK ALL SHARP EDGES.
- DO NOT ALTER ARTWORK e.g. TO ADD LOGO OR DATE CODE.
- SCORING:

UNLESS OTHERWISE SPECIFIED
DIMENSIONS ARE IN INCHES
TOLERANCES ON ANGLE ± 1°
2 PLACE ± .01 3 PLACE ± .005
INTERPRET DIM AND TOL
PER ASME Y14.5M - 1994

THIRD ANGLE PROJECTION



DO NOT SCALE DRAWING

| CONTRACT NO | |
|--------------------------|----------|
| APPROVALS | DATE |
| DRAWN <i>[Signature]</i> | 04/07/14 |
| CHECKED | |
| APPROVED VICTOR K. | 06/20/14 |
| ENGINEER | |

1630 McCarthy Blvd.
Milpitas, CA 95035
Phone: (408)432-1900
Fax: (408)434-0507

TITLE

FAB, LTC3890EUH-2/LTC3890EUH, POLYPHASE
HIGH VOLTAGE STEP-DOWN CONVERTER

| SIZE | CAGE CODE | DWG NO | REV |
|-----------|-----------|-----------------------|--------------|
| B | | DC2236A | 1 |
| SCALE 1/1 | | FILENAME: 2236A-1.PCB | SHEET 1 OF 1 |