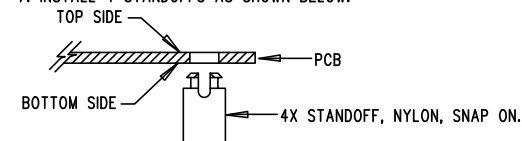


REVISION HISTORY				
ECO	REV	DESCRIPTION	APP. ENG.	DATE
-	3	PRODUCTION	YL	04-01-16

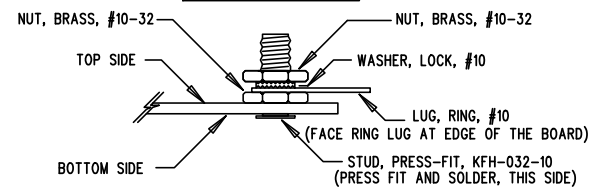
#### NOTES: UNLESS OTHERWISE SPECIFIED

- WORKMANSHIP SHALL BE IN ACCORDANCE WITH IPC-A-610.
- ASSEMBLY PROCESS SHALL INCLUDE: REFLOW SOLDER TOP SIDE SMD. MAXIMUM SOLDER TEMPERATURE IS 240 DEGREES CELSIUS.
- PARTS TO OMIT WILL BE SPECIFIED ON THE BILL OF MATERIALS. LOCATIONS OF OMITTED PARTS SHALL BE FREE OF SOLDER. MASK THE SOLDER STENCIL WHERE SMT PARTS ARE OMITTED.
- INSTALL SHUNTS AS SHOWN ON ASSY DRAWING.
- DEPANELIZE BOARDS AFTER ASSEMBLY AND ROUTE-OUT THE BREAKOUT TABS ON FOUR SIDES OF THE BOARD EDGE.
- DO NOT APPLY ANY KIND OF ASSEMBLY STAMP OR QA STAMP TO ANY BOARD.
- INSTALL 4 STANDOFFS AS SHOWN BELOW:



- 8 MARK ASSEMBLY TYPE AND VOUT CURRENT WITH BLACK PERMANENT MARKER BASED ON THE TABLE BELOW:

ASSY	IC
-A	LTM4636EY
-B	LTM4636EY-1



APPROVALS		 1630 MCCARTHY BLVD MILPITAS, CA 95035 PH: (408) 432-1900 www.linear.com LTC CONFIDENTIAL- FOR CUSTOMER USE ONLY	
PCB DES.	LT		
APP ENG.	YL	<b>TITLE: TOP ASSEMBLY DRAWING</b> SINGLE OUTPUT, HIGH CURRENT, STEP-DOWN $\mu$ MODULE REGULATOR	
		SIZE	IC NO. LTM4636EY
		N/A	DEMO CIRCUIT 2230A
SCALE = NONE		REV.	3
		FILENAME: DC2230A-3.PCB	SHT 1 OF 2