
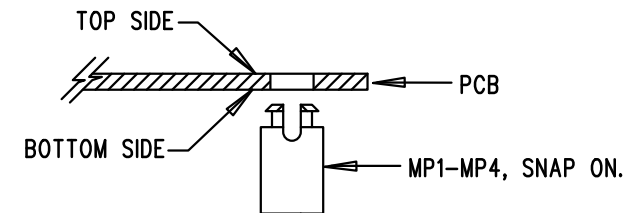


APPROVALS		 1630 MCCARTHY BLVD MILPITAS, CA 95035 PH: (408)432-1900 www.linear.com LTC CONFIDENTIAL- FOR CUSTOMER USE ONLY	
PCB DES.	M.HAWKINS		
APP ENG.	G.HOOVER	TITLE: BOTTOM ASSEMBLY DRAWING <b>OVERSAMPLED 32-BIT ADC  WITH PROGRAMMABLE DIGITAL FILTER</b>	
SIZE N/A	DEMO CIRCUIT 2222A	DWG. REV. 3	
SCALE = NONE		SHT 2 of 2	

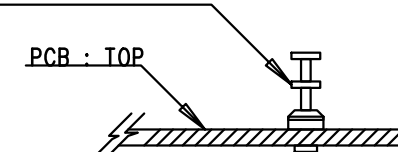
REVISION HISTORY				
ECO	REV	DESCRIPTION	APP. ENG.	DATE

## NOTES: UNLESS OTHERWISE SPECIFIED

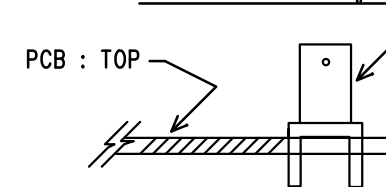
1. WORKMANSHIP SHALL BE IN ACCORDANCE WITH IPC-A-610.
2. ASSEMBLY PROCESS SHALL INCLUDE REFLOW SOLDER TOP AND BOTTOM SIDES. MAXIMUM TEMPERATURE SHALL NOT EXCEED 240 DEGREES CELSIUS.
3. UNSTUFFED LAND PATTERNS SHALL BE FREE OF SOLDER. MASK THE SOLDER STENCIL AT THESE LOCATIONS.
4. INSTALL SHUNTS IN POSITIONS AS DEPICTED.
5. DEPANELIZE BOARDS AFTER ASSEMBLY AND ROUTE-OUT THE BREAKOUT TABS ON ALL BOARD EDGES.
6. APPLY DEMO SERIAL NUMBER LABEL ON BOTTOM SIDE AS SHOWN; REFER TO PAGE 2.
7. INSTALL 4 STANDOFFS AT 4 LOCATIONS AS SHOWN BELOW:



8. INSTALL TURRETS AS SHOWN:  
TURRETS : TYPICAL, MILL-MAX 2308-2, 2501-2

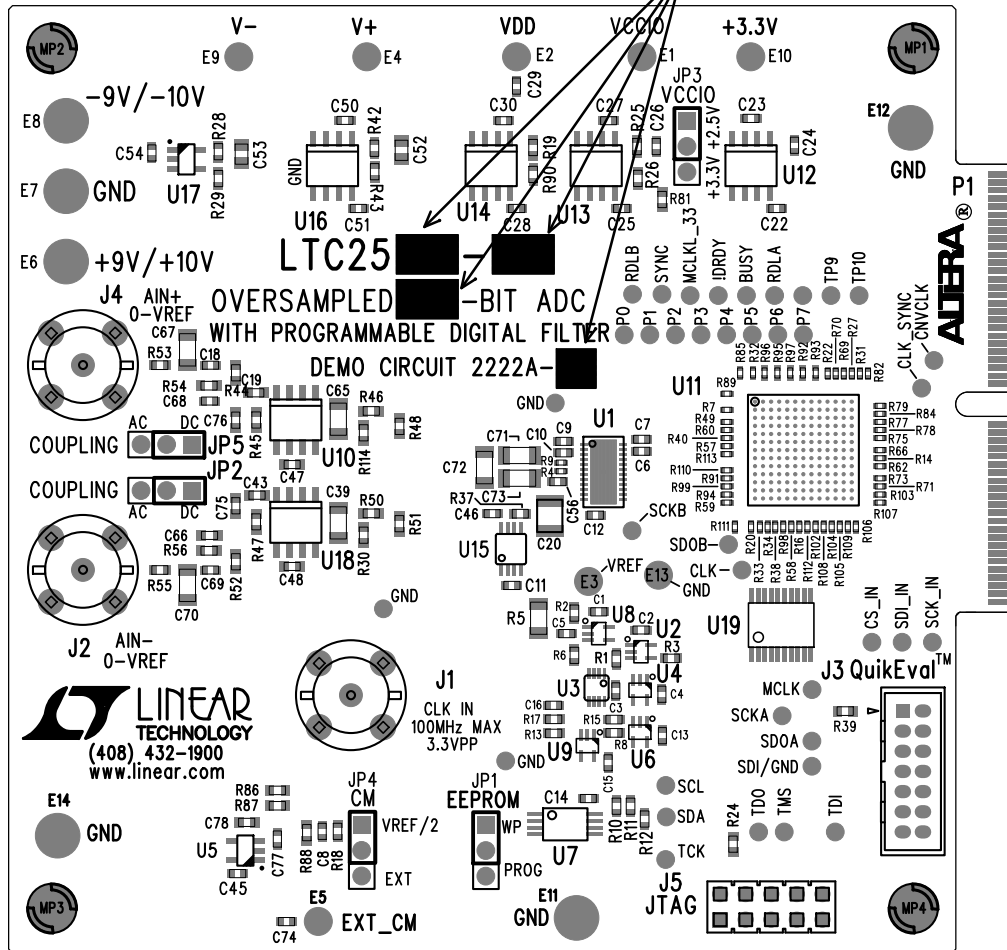



9. INSTALL BNC JACKS AS SHOWN:  
CONNECTOR : AMPHENOL CONNEX #112404



10. USE BLACK PERMANENT MARKER TO WRITE IC#, BIT# AND SKU# ASSEMBLY VARIANT DASH NUMBER IN THE WHITE SILKSCREEN SPACES PROVIDED, ACCORDING TO THE TABLE BELOW.

IC #	BIT#	SKU# ASS'Y VARIANT
LTC2500-32	32-BIT	2222A- A
LTC2508-32	32-BIT	2222A- B
LTC2512-24	24-BIT	2222A- C



APPROVALS		 1630 MCCARTHY BLVD MILPITAS, CA 95035 PH: (408)432-1900 www.linear.com LTC CONFIDENTIAL- FOR CUSTOMER USE ONLY	
PCB DES.	M.HAWKINS		
APP ENG.	G.HOOVER	TITLE: TOP ASSEMBLY DRAWING	
		OVERSAMPLED 32-BIT ADC WITH PROGRAMMABLE DIGITAL FILTER	
		SIZE N/A	DWG. REV. 3
		SCALE = NONE	
		SHT 1 OF 2	