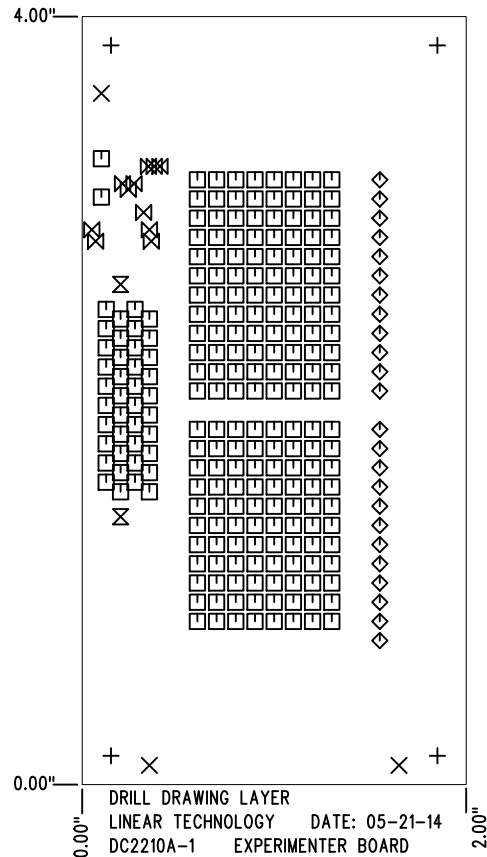


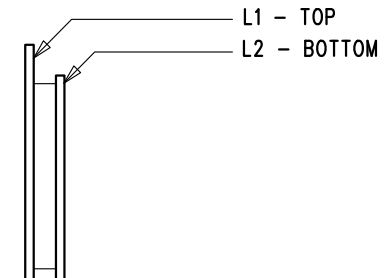
REVISION HISTORY				
ECO	REV	DESCRIPTION	APP. ENG.	DATE
-	1	1ST PROTOTYPE	MARK T.	05-21-14

SHOWN FROM TOP SIDE



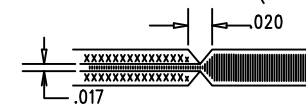
SIZE	QTY	SYM	PLATED	TOL
0.187	4	+	NO	+/-0.003"
0.07	3	×	NO	+/-0.003"
0.035	226	□	YES	+/-0.003"
0.05	24	◇	YES	+/-0.003"
0.08	2	⊗	NO	+/-0.003"
0.012	11	⊗	YES	+/-0.003"

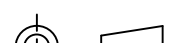

LAYER STRUCTURE



NOTES: UNLESS OTHERWISE SPECIFIED

- FAB PER IPC-A-600.
- MATERIAL: -LEAD FREE ASSEMBLY COMPLIANT, ISOLA FR-370HR
-FINISHED THICKNESS TO BE 0.062" +/- .005"
-TOTAL OF 2 LAYERS WITH 2 OZ. CU ON EACH.
-FLAMMABILITY RATING: 94 V-0 MINIMUM.
- SIZE: CUT TO DIMENSIONS AND TOLERANCES SHOWN.
0.00" ARE PRIMARY DATUMS.
- DRILLING: -DRILL HOLES PER SCHEDULE. PLATE THROUGH HOLES WITH COPPER, 0.001" THICK MIN.
-ALL HOLE SIZES ARE SPECIFIED AFTER PLATING.
-HOLE LOCATION TOLERANCES ARE +/-0.003" IN RELATION TO CENTER
- FINISH: -SMOBC USING LPI BOTH SIDES, COLOR GREEN.
-GOLD IMMERSION BOTH SIDES.
-FOR SILKSCREENS: USE WHITE NON-CONDUCTIVE INK.
- DO NOT ALTER ARTWORK e.g. TO ADD LOGO OR DATE CODE.
PAD SIZE CAN BE MODIFIED TO MEET END FINISH.
- PCBS ARE TO BE RoHS COMPLIANT.
- SCORING FOR PANELIZED PCB (PRODUCTION FAB ONLY):



<div>UNLESS OTHERWISE SPECIFIED</div> <div>DIMENSIONS ARE IN INCHES</div> <div>TOLERANCES:</div> <div>0.XX" = ±0.01"</div> <div>0.XXX" = ±0.005"</div> <div>INTERPRET DIM AND TOL</div> <div>PER ASME Y14.5M-1994</div> <div>THIRD ANGLE PROJECTION</div> <div></div>	<div>APPROVALS</div>		<div> LINEAR TECHNOLOGY</div> <div>1630 MCCARTHY BLVD MILPITAS, CA 95035 PH: (408)432-1900 www.linear.com LTC CONFIDENTIAL- FOR CUSTOMER USE ONLY</div>		
	PCB DES.	KIM T.			
	APP ENG.	MARK T.	TITLE: FABRICATION DRAWING		
			EXPERIMENTER BOARD		
			SIZE N/A	IC NO. DEMO CIRCUIT 2210A	REV 1
		SCALE = NONE		FILENAME: DC2210A-1.PCB	
				SHT 1 OF 1	