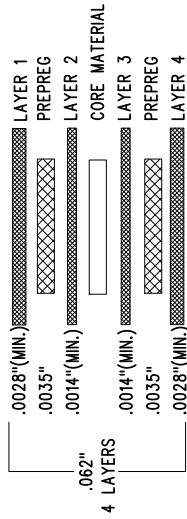
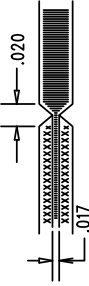


## LAYER STRUCTURE

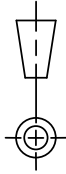


## NOTES: UNLESS OTHERWISE SPECIFIED

1. FAB PER IPC-A-600.
2. MATERIAL: -LEAD FREE ASSEMBLY COMPLIANT, ISOLA FR-370HR OR EQUIVALENT.  
-FINISHED THICKNESS TO BE 0.062 +/- .005  
-TOTAL OF 4 LAYERS WITH 2 OZ. CU ON THE OUTER LAYERS AND 1 OZ. CU ON THE INNER LAYERS.  
-FLAMMABILITY RATING: 94 V-0 MINIMUM.
3. SIZE: CUT TO DIMENSIONS AND TOLERANCES SHOWN.  
0.00\"
4. DRILLING: -DRILL HOLES PER SCHEDULE. PLATE THROUGH HOLES WITH COPPER, 0.001 THICK MIN.  
-ALL HOLE SIZES ARE SPECIFIED AFTER PLATING.  
-HOLE LOCATION TOLERANCES ARE +/-0.003 IN RELATION TO CENTER
5. FINISH: -SMOBC USING LPI BOTH SIDES, COLOR GREEN.  
-GOLD IMMERSION BOTH SIDES.  
-FOR SILKSCREENS: USE WHITE NON-CONDUCTIVE INK.
6. DO NOT ALTER ARTWORK e.g. TO ADD LOGO OR DATE CODE.  
PAD SIZE CAN BE MODIFIED TO MEET END FINISH.
7. PCBs ARE TO BE RoHS COMPLIANT.
8. SCORING FOR PANELIZED PCB (PRODUCTION FAB ONLY):



UNLESS OTHERWISE SPECIFIED  
DIMENSIONS ARE IN INCHES  
TOLERANCES:  
0.XX = +/- 0.01  
0.XXX = +/- 0.005  
INTERPRET DIM AND TOL  
PER ASME Y14.5M-1994  
THIRD ANGLE PROJECTION



**LINEAR TECHNOLOGY**  
1630 MCCARTHY BLVD  
MILPITAS, CA 95035  
PH: (408) 432-7800  
FAX: (408) 432-7800  
LTC CONFIDENTIAL -  
FOR CUSTOMER USE ONLY

TITLE: FABRICATION DRAWING  
2MHZ, 2A MICROPOWER SYNCHRONOUS  
MONOLITHIC STEP-DOWN REGULATOR

SIZE	IC NO.	LT8609EMSE	REV
N/A		DEMO CIRCUIT 2195A	2
FILENAME: DC2195A-2.PCB			SHT 1 OF 1

- ADDITIONAL REQUIREMENT FOR PROTOTYPE FAB ONLY:
1. OUTGOING INSPECTION REPORT (BASED ON ACTUAL MEASUREMENTS AND CROSS SECTION).
- ADDITIONAL REQUIREMENTS FOR PRODUCTION FAB ONLY:
1. PROVIDE COMPLIANCE CERTIFICATES FOR RoHS, REACH AND CONFLICT-FREE MINERALS.
  2. SOLDERABILITY BOARD WITH TEST RESULTS.
  3. OUTGOING INSPECTION REPORT (BASED ON ACTUAL MEASUREMENTS AND CROSS SECTION).
  4. VACUUM PACKED WITH DESICCANT.
  5. FULL PANEL WITH NO REJECT.

SIZE	QTY	SYM	PLATED	TOL
0.01	511	+	YES	+/-0.003
0.187	4	X	NO	+/-0.003
0.07	2	□	NO	+/-0.003
0.094	10	◇	YES	+/-0.003
0.008	1	⊗	YES	+/-0.003
0.035	8	⊗	YES	+/-0.003