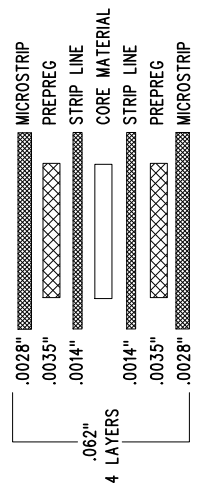
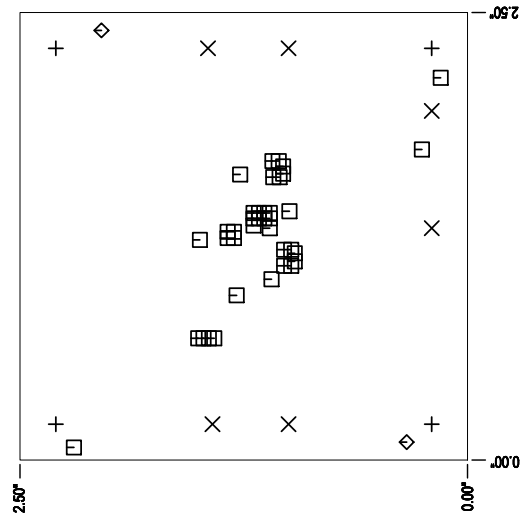
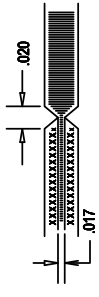


LAYER STRUCTURE



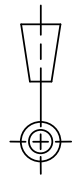
NOTES: UNLESS OTHERWISE SPECIFIED

1. FAB PER IPC-A-600.
2. MATERIAL: EPOXY FIBERGLASS, NEMA GRADE FR-4
 - FINISHED THICKNESS TO BE 0.062" +/- .005"
 - TOTAL OF 4 LAYERS WITH 2 OZ. CU ON THE OUTER LAYERS AND 1 OZ. CU ON THE INNER LAYERS.
 - FLAMMABILITY RATING: 94 V-0 MINIMUM.
3. SIZE: CUT TO DIMENSIONS AND TOLERANCES SHOWN. 0.007 ARE PRIMARY DATUMS.
4. DRILLING: -DRILL HOLES PER SCHEDULE PLATE THROUGH HOLES WITH COPPER, 0.001" THICK MIN.
 - ALL HOLE SIZES ARE SPECIFIED AFTER PLATING.
 - HOLE LOCATION TOLERANCES ARE +/-0.003" IN RELATION TO CENTER
 - FOR VAS SIZE > 0.01", VAS HOLES NEED TO BE PLUGGED AND COVERED WITH SOLDERMASK.
5. FINISH: -SMB/C USING LPI BOTH SIDES, COLOR GREEN.
 - GOLD IMMERSION BOTH SIDES.
 - LEAD FREE SOLDER CAN BE USED FOR PROTOTYPE)
 - FOR SILKSCREEN: BOTH SIDES USE WHITE NON-CONDUCTIVE INK.
6. DO NOT ALTER ARTWORK e.g. TO ADD LOGO OR DATE CODE. PAD SIZE CAN BE MODIFIED TO MEET END FINISH.
7. PCBs ARE TO BE ROHS COMPLIANT.
8. SCORING FOR PANELIZED PCB:



| SIZE | QTY | SYM | PLATED | TOL |
|-------|-----|-----|--------|----------|
| 0.187 | 4 | + | NO | +/-0.003 |
| 0.094 | 6 | X | YES | +/-0.003 |
| 0.01 | 38 | □ | YES | +/-0.003 |
| 0.07 | 2 | ◇ | NO | +/-0.003 |

UNLESS OTHERWISE SPECIFIED
DIMENSIONS ARE IN INCHES
TOLERANCES:
0.XXX = 0.01"
0.XXX = 0.005"
INTERPRET DIM AND TOL
PER ASME Y14.5M-1994
THIRD ANGLE PROJECTION



LINEAR
TECHNOLOGY
4800 MC CARTHY BLVD
MILPITAS, CA 95035
PH: (408) 452-1800
WWW.LINEAR.COM
E: info@linear.com
E: sales@linear.com
FOR CUSTOMER USE ONLY

TITLE: FABRICATION DRAWING
BOOST/SEPIC/ INVERTING REGULATOR

| SIZE | IC NO. | REV |
|-----------|---------------|------------|
| N/A | LT8580EDD | 2 |
| FILENAME: | DC2186A-2.PCB | SHT 1 OF 1 |