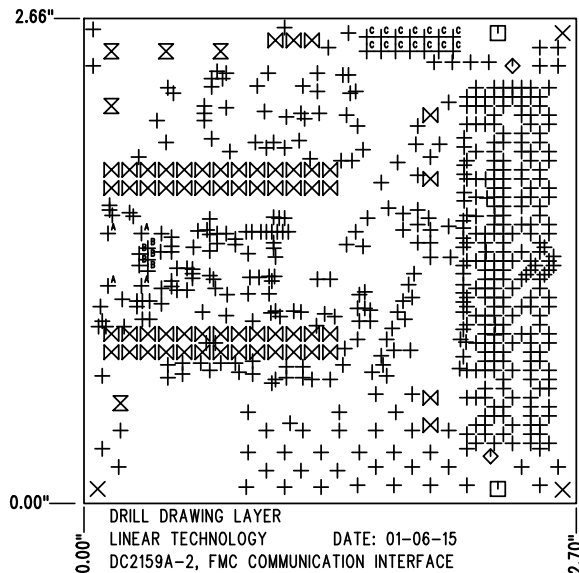


SHOWN FROM TOP SIDE



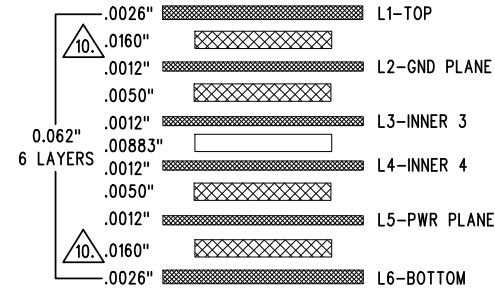
DRILL DRAWING LAYER
LINEAR TECHNOLOGY DATE: 01-06-15
DC2159A-2, FMC COMMUNICATION INTERFACE

SIZE	QTY	SYM	PLATED	TOL
10	483	+	YES	+/-0.003"
70	3	X	NO	+/-0.003"
125	2	□	NO	+/-0.003"
50	2	◇	NO	+/-0.003"
63	5	X	YES	+/-0.003"
35	59	X	YES	+/-0.003"
65	4	+ ^A	YES	+/-0.003"
25	5	+ ^B	YES	+/-0.003"
40	14	+ ^C	YES	+/-0.003"

REVISION HISTORY

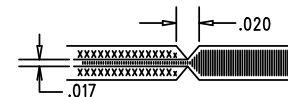
ECO	REV	DESCRIPTION	APP. ENG.	DATE
-	2	PRODUCTION	MARK T.	01-06-15

LAYER STRUCTURE

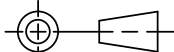



NOTES: UNLESS OTHERWISE SPECIFIED

- FAB PER IPC-A-600.
- MATERIAL: -LEAD FREE ASSEMBLY COMPLIANT, ISOLA FR-370HR OR EQUIVALENT.
-FINISHED THICKNESS TO BE 0.062" +/- .005"
-TOTAL OF 6 LAYERS WITH 2 OZ. CU ON THE OUTER LAYERS AND 1 OZ. CU ON THE INNER LAYERS.
-FLAMMABILITY RATING: 94 V-0 MINIMUM.
- SIZE: CUT TO DIMENSIONS AND TOLERANCES SHOWN.
0.00" ARE PRIMARY DATUMS.
- DRILLING: -DRILL HOLES PER SCHEDULE. PLATE THROUGH HOLES WITH COPPER, 0.001" THICK MIN.
-ALL HOLE SIZES ARE SPECIFIED AFTER PLATING.
-HOLE LOCATION TOLERANCES ARE +/-0.003" IN RELATION TO CENTER
- FINISH: -SMOBC USING LPI BOTH SIDES, COLOR GREEN.
-GOLD IMMERSION BOTH SIDES.
-FOR SILKSCREENS: USE WHITE NON-CONDUCTIVE INK.
- DO NOT ALTER ARTWORK e.g. TO ADD LOGO OR DATE CODE.
PAD SIZE CAN BE MODIFIED TO MEET END FINISH.
- PCBS ARE TO BE RoHS COMPLIANT.
- SCORING FOR PANELIZED PCB (PRODUCTION FAB ONLY):



- CONTROLLED 50 OHM +/-10% IMPEDANCE FOR LAYERS 1-2 USING 0.006" TRACES.

<div>UNLESS OTHERWISE SPECIFIED</div> <div>DIMENSIONS ARE IN INCHES</div> <div>TOLERANCES:</div> <div>0.XX" = ±0.01"</div> <div>0.XXX" = ±0.005"</div> <div>INTERPRET DIM AND TOL</div> <div>PER ASME Y14.5M-1994</div> <div>THIRD ANGLE PROJECTION</div> <div></div>	APPROVALS		<div> LINEAR TECHNOLOGY</div> <div>1630 MCCARTHY BLVD MILPITAS, CA 95035 PH: (408)432-1900 www.linear.com LTC CONFIDENTIAL- FOR CUSTOMER USE ONLY</div>		
	PCB DES.	KIM T.			
	APP ENG.	MARK T.			
	TITLE: FABRICATION DRAWING				
	FMC COMMUNICATION INTERFACE				
	SIZE IC NO. REV				
N/A DEMO CIRCUIT 2159A 2					
SCALE = NONE		FILENAME: DC2159A-2.PCB		SHT 1 OF 1	