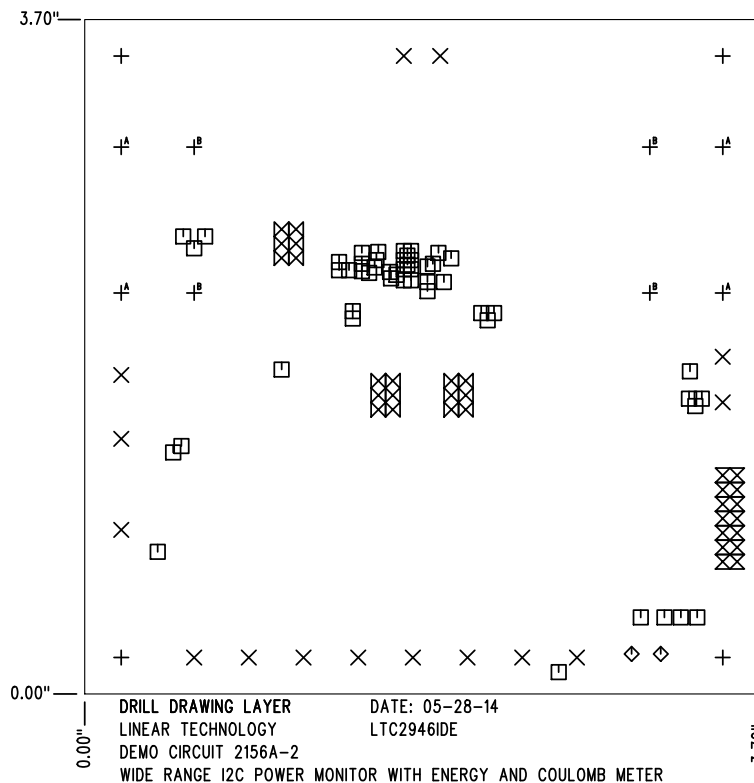


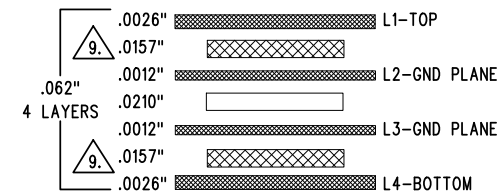
REVISION HISTORY				
ECO	REV	DESCRIPTION	APP. ENG.	DATE
-	2	PRODUCTION	SAL H.	05-28-14

SHOWN FROM TOP SIDE



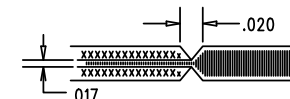
SIZE	QTY	SYM	PLATED	TOL
0.19	4	+	NO	+/-0.003"
0.063	15	X	YES	+/-0.003"
0.01	51	□	YES	+/-0.003"
0.025	2	◇	YES	+/-0.003"
0.04	14	⊗	YES	+/-0.003"
0.035	18	⊗	YES	+/-0.003"
0.094	4	⊕ ^A	YES	+/-0.003"
0.215	4	⊕ ^B	YES	+/-0.003"

LAYER STRUCTURE



NOTES: UNLESS OTHERWISE SPECIFIED

- FAB PER IPC-A-600.
- MATERIAL: -LEAD FREE ASSEMBLY COMPLIANT, ISOLA FR-370HR OR EQUIVALENT.
-FINISHED THICKNESS TO BE 0.062" +/- .005"
-TOTAL OF 4 LAYERS WITH 2 OZ. CU ON THE OUTER LAYERS
AND 1 OZ. CU ON THE INNER LAYERS.
-FLAMMABILITY RATING: 94 V-0 MINIMUM.
- SIZE: CUT TO DIMENSIONS AND TOLERANCES SHOWN.
0.00" ARE PRIMARY DATUMS.
- DRILLING: -DRILL HOLES PER SCHEDULE. PLATE THROUGH
HOLES WITH COPPER, 0.001" THICK MIN.
-ALL HOLE SIZES ARE SPECIFIED AFTER PLATING.
-HOLE LOCATION TOLERANCES ARE +/-0.003"
IN RELATION TO CENTER
- FINISH: -SMOBC USING LPI BOTH SIDES, COLOR GREEN.
-GOLD IMMERSION BOTH SIDES.
-FOR SILKSCREEN: BOTH SIDES USE WHITE NON-CONDUCTIVE INK.
- DO NOT ALTER ARTWORK e.g. TO ADD LOGO OR DATE CODE.
PAD SIZE CAN BE MODIFIED TO MEET END FINISH.
- PCBS ARE TO BE RoHS COMPLIANT.
- SCORING FOR PANELIZED PCB:



9. SUBJECT TO CHANGE BY MANUFACTURER, DEPENDING ON
DIELECTRIC CONSTANT DEVIATIONS. PLEASE CONSULT LTC.

UNLESS OTHERWISE SPECIFIED		APPROVALS				1630 MCCARTHY BLVD MILPITAS, CA 95035 PH: (408)432-1900 www.linear.com LTC CONFIDENTIAL- FOR CUSTOMER USE ONLY	
DIMENSIONS ARE IN INCHES		PCB DES.	KIM T.				
TOLERANCES:		APP ENG.	SAL H.	TITLE: FABRICATION DRAWING WIDE RANGE I2C POWER MONITOR WITH ENERGY AND COULOMB METER		SIZE IC NO. LTC2946IDE N/A DEMO CIRCUIT 2156A REV 2	
0.XX" = ± 0.01"							
0.XXX" = ± 0.005"				SCALE = NONE		FILENAME: DC2156A-2.PCB	
INTERPRET DIM AND TOL PER ASME Y14.5M-1994 THIRD ANGLE PROJECTION						SHT 1 OF 1	