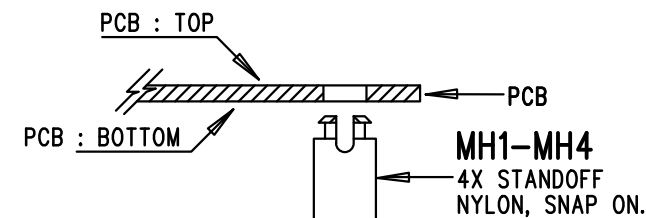


# REVISION HISTORY

| ECO | REV | DESCRIPTION | APP. ENG. | DATE     |
|-----|-----|-------------|-----------|----------|
| -   | 2   | PRODUCTION  | SAL H.    | 05-28-14 |

## NOTES: UNLESS OTHERWISE SPECIFIED

- WORKMANSHIP SHALL BE IN ACCORDANCE WITH IPC-A-610.
- ASSEMBLY PROCESS SHALL INCLUDE: REFLOW SOLDER TOP SIDE SMD. MAXIMUM SOLDER TEMPERATURE IS 240 DEGREES CELSIUS.
- PARTS TO OMIT WILL BE SPECIFIED ON THE BILL OF MATERIALS. LOCATIONS OF OMITTED PARTS SHALL BE FREE OF SOLDER. MASK THE SOLDER STENCIL WHERE SMT PARTS ARE OMITTED.
- INSTALL SHUNTS AS SHOWN ON ASSEMBLY DRAWING.
- DEPANELIZE BOARDS AFTER ASSEMBLY AND ROUTE-OUT THE BREAKOUT TABS ON FOUR SIDES OF THE BOARD EDGE.
- DO NOT APPLY ANY KIND OF ASSEMBLY STAMP OR QA STAMP TO ANY BOARD.
- INSTALL 4 STANDOFFS AS SHOWN BELOW:



## APPROVALS

|          |        |
|----------|--------|
| PCB DES. | KIM T. |
| APP ENG. | SAL H. |



1630 MCCARTHY BLVD  
MILPITAS, CA 95035  
PH: (408)432-1900  
www.linear.com  
LTC CONFIDENTIAL-  
FOR CUSTOMER USE ONLY

TITLE: TOP ASSEMBLY DRAWING

WIDE RANGE I2C POWER MONITOR  
WITH ENERGY AND COULOMB METER

|             |  |           |
|-------------|--|-----------|
| SIZE<br>N/A | IC NO.<br>LTC2946IDE<br>DEMO CIRCUIT 2156A | REV.<br>2 |
|-------------|--|-----------|

SCALE = NONE

FILENAME: DC2156A-2.PCB

SHT 1 OF 1