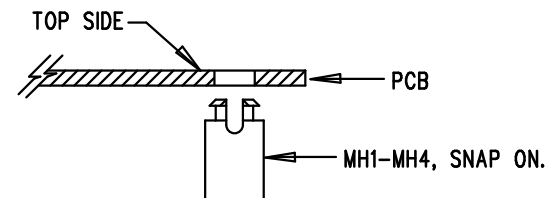


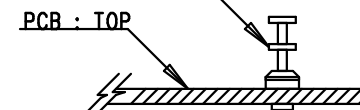
REVISION HISTORY				
ECO	REV	DESCRIPTION	APP. ENG.	DATE
-	1	PRODUCTION	G.HOOVER	10-10-13

## NOTES: UNLESS OTHERWISE SPECIFIED

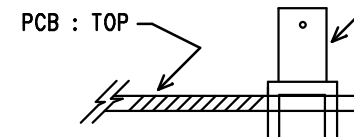
1. WORKMANSHIP SHALL BE IN ACCORDANCE WITH IPC-A-610.
2. ASSEMBLY PROCESS SHALL INCLUDE REFLOW SOLDER TOP AND BOTTOM SIDES. MAXIMUM TEMPERATURE SHALL NOT EXCEED 240 DEGREES CELSIUS.
3. OMITTED (OPTIONAL) PARTS ARE SPECIFIED ON THE BILL OF MATERIALS. LAND PATTERNS FOR THESE PARTS SHALL BE FREE OF SOLDER. MASK THE SOLDER STENCIL AT THESE LOCATIONS.
4. INSTALL SHUNTS AS DEPICTED.
5. DEPANELIZE BOARDS AFTER ASSEMBLY AND ROUTE-OUT THE BREAKOUT TABS ON ALL BOARD EDGES.
6. DO NOT APPLY ANY KIND OF ASSEMBLY OR QA STAMP TO BOARD.
7. INSTALL 4 STANDOFFS AT MH1-MH4 LOCATIONS AS SHOWN BELOW:



8. INSTALL TURRETS, E1-E9, AS SHOWN:  
TURRETS : TYPICAL, MILL-MAX 2308-2, 2501-2



9. INSTALL BNC JACKS J1,J2,J4 AS SHOWN:  
CONNECTOR : AMPHENOL CONNEX #112404



## APPROVALS

PCB DES. M.HAWKINS

APP ENG. G.HOOVER

**LINEAR TECHNOLOGY**

1630 MCCARTHY BLVD  
MILPITAS, CA 95035  
PH: (408)432-1900  
www.linear.com  
LTC CONFIDENTIAL-  
FOR CUSTOMER USE ONLY

TITLE: TOP ASSEMBLY DRAWING

2ppm INL, DRIVER + 20-BIT SAR ADC

SIZE N/A IC NO. LTC2378CMS-20  
DEMO CIRCUIT 2135A

REV. 1

SCALE = NONE

FILENAME: DC2135A-1.PCB

SHT 1 OF 2