



PFO RST FAULT CHRG GND  
D4 D5 D3 D6

NTC  
JP1 INT  
EXT

EXTNTC

GND

2A CHARGE  
VBAT

5V IN BACKUP  
VSY

GND

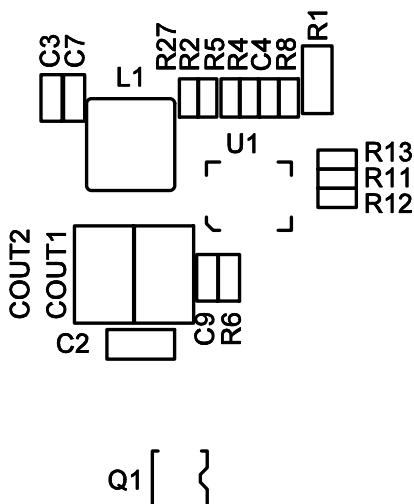
CIN1  
R25

4.8V - 5.5V

DCIN

# LTC4040

DEMO CIRCUIT 2118A  
BATTERY CHARGER BACKUP  
POWER MANAGER



OFF ON  
LEDS JP6

0 1  
F0 JP4

0 1  
F1 JP5

0 1  
F2 JP7

GND

EXTVDD

PROG

GND

CLPROG

ENCHG  
ON  
OFF

CHGOFF

BSTOFF

ENBST  
ON  
OFF

JP2 FOR LTC CUSTOMER USE ONLY

JP3

LINEAR TECHNOLOGY CORPORATION

DC2118A REV 4

TOP SILKSCREEN

05/06/15