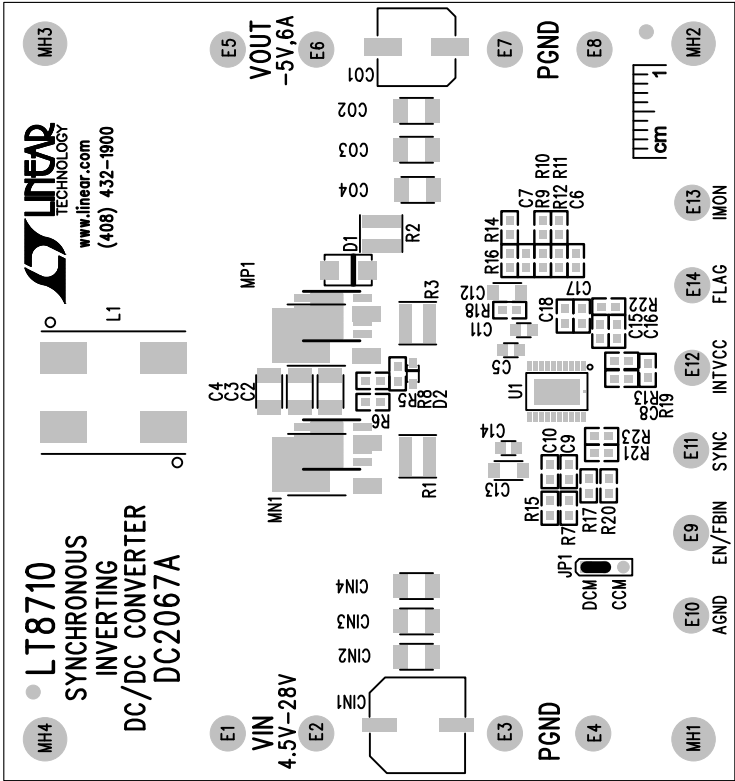
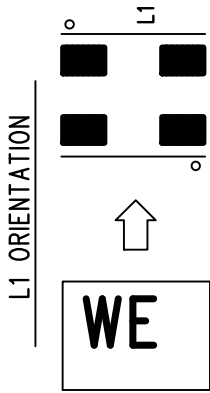


REVISION HISTORY			
ECO	REV	DESCRIPTION	APP. ENG.
-	4	PRODUCTION	GEORGE Q.
			10-29-13

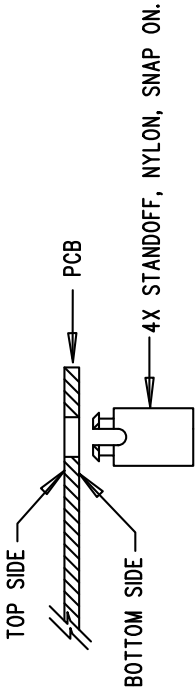


(ALL INSTALLED PARTS ARE ON TOP SIDE, ALL BOTTOM SIDE PARTS ARE OPT)



NOTES: UNLESS OTHERWISE SPECIFIED

1. WORKMANSHIP SHALL BE IN ACCORDANCE WITH IPC-A-610. MAXIMUM SOLDER TEMPERATURE IS 240 DEG C.
2. ASSEMBLY PROCESS SHALL INCLUDE: REFLOW SOLDER TOP SIDE SMD.
3. PARTS TO OMIT WILL BE SPECIFIED ON THE BILL OF MATERIALS. LOCATIONS OF OMITTED PARTS SHALL BE FREE OF SOLDER. MASK THE SOLDER STENCIL WHERE SMT PARTS ARE OMITTED.
4. INSTALL SHUNTS AS SHOWN ON ASSY DRAWING.
5. DEPANELIZE BOARDS AFTER ASSEMBLY AND ROUTE-OUT THE BREAKOUT TABS ON FOUR SIDES OF THE BOARD EDGE.
6. DO NOT APPLY ANY KIND OF ASSEMBLY STAMP OR QA STAMP TO ANY BOARD.
7. INSTALL 4 STANDOFFS AT 4 LOCATIONS AS SHOWN BELOW:



APPROVALS		LINEAR TECHNOLOGY		1630 MCCARTHY BLVD MILPITAS, CA 95035 PH: (408)432-9800 WWW.LINEAR.COM LTC CONFIDENTIAL - FOR CUSTOMER USE ONLY	
PCB DES.	JW	TITLE: TOP ASSEMBLY DRAWING		SYNCHRONOUS INVERTING DC/DC CONVERTER	
APP ENG.	GEORGE Q.				
		SIZE	IC NO.	LT8710EFE	REV. 4
		N/A		DC2067A	
SCALE = NONE		FILENAME: DC2067A-4.PCB		SHT 1 OF 2	