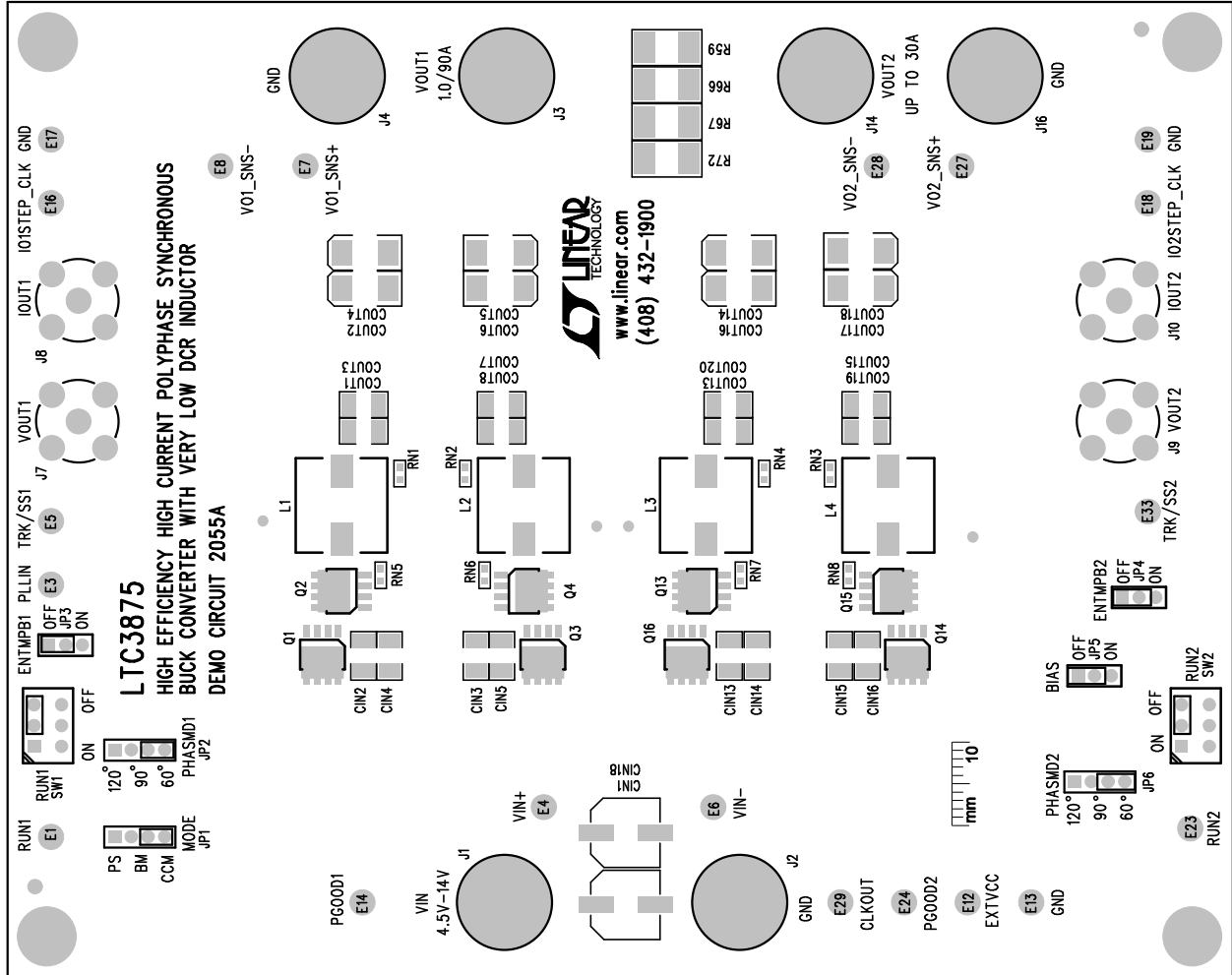
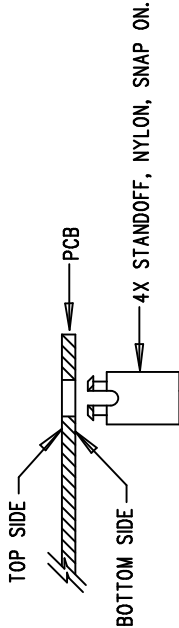


REVISION HISTORY			
ECO	REV	DESCRIPTION	APP. ENG.
-	2	PRODUCTION	HAORAN W.
			11-12-13

NOTES: UNLESS OTHERWISE SPECIFIED

1. WORKMANSHIP SHALL BE IN ACCORDANCE WITH IPC-A-610.
2. ASSEMBLY PROCESS SHALL INCLUDE: REFLOW SOLDER TOP SIDE SMD. MAXIMUM SOLDER TEMPERATURE IS 240 DEGREES CELSIUS.
3. PARTS TO OMIT WILL BE SPECIFIED ON THE BILL OF MATERIALS. LOCATIONS OF OMITTED PARTS SHALL BE FREE OF SOLDER. MASK THE SOLDER STENCIL WHERE SMT PARTS ARE OMITTED.
4. INSTALL SHUNTS AS SHOWN ON ASSY DRAWING.
5. DEPANELIZE BOARDS AFTER ASSEMBLY AND ROUTE-OUT THE BREAKOUT TABS ON FOUR SIDES OF THE BOARD EDGE.
6. DO NOT APPLY ANY KIND OF ASSEMBLY STAMP OR QA STAMP TO ANY BOARD.
7. INSTALL 4 STANDOFFS AT 4 LOCATIONS AS SHOWN BELOW:



APPROVALS		LINEAR TECHNOLOGY	
PCB DES.	HZ	1630 MCCARTHY BLVD MILPITAS, CA 95035 PH: (408) 432-1900 WWW.LINEAR.COM LTC CONSUMER FOR CUSTOMER USE ONLY	
APP ENG.	HAORAN W.		
		TITLE: TOP ASSEMBLY DRAWING	
		HIGH EFFICIENCY HIGH CURRENT POLYPHASE SYNCHRONOUS BUCK CONVERTER WITH VERY LOW DCR INDUCTOR	
		SIZE	REV.
		N/A	2
		IC NO.	LTC3875EJ
		DEMO CIRCUIT	2055A
		FILENAME: DC2055A-2.PCB	SHT 1 OF 2