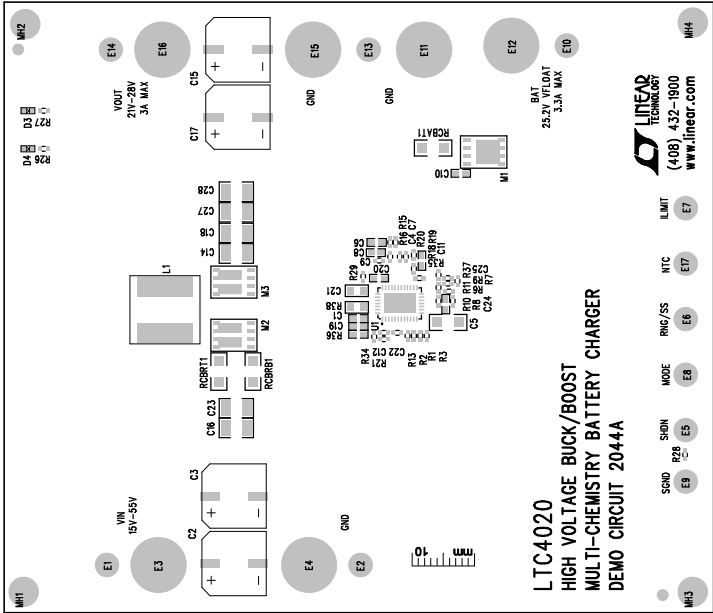
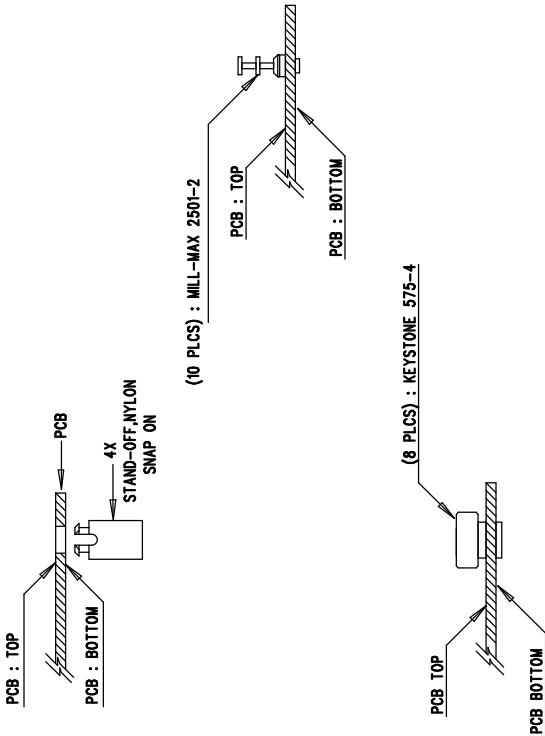


REVISION HISTORY			
ECO	REV	DESCRIPTION	DATE
-	2	PRODUCTION	Charlie Z. 8-20-13
-	1	PROTOTYPE	CZ 8-13-12

NOTES: UNLESS OTHERWISE SPECIFIED

1. WORKMANSHIP SHALL BE IN ACCORDANCE WITH IPC-A-610.
2. ASSEMBLY PROCESS SHALL INCLUDE: REFLOW SOLDER TOP SIDE SMD. MAXIMUM SOLDER TEMPERATURE IS 240 DEGREES CELSIUS.
3. PARTS TO OMIT WILL BE SPECIFIED ON THE BILL OF MATERIALS LOCATIONS OF OMITTED PARTS SHALL BE FREE OF SOLDER.
4. MASK THE SOLDER STENCIL WHERE SMT PARTS ARE OMITTED.
5. INSTALL SHUNTS AS SHOWN ON ASSY DRAWING.
6. DEPANELIZE BOARDS AFTER ASSEMBLY AND ROUTE-OUT THE BREAKOUT TABS ON FOUR SIDES OF THE BOARD EDGE.
7. DO NOT APPLY ANY KIND OF ASSEMBLY STAMP OR QA STAMP TO ANY BOARD.
8. INSTALL TURRETS, STAND-OFFS AND BANANA JACKS AS SHOWN BELOW:



APPROVALS		LINEAR TECHNOLOGY	
PCB DES.	HZ	DESIGN	LINEAR TECHNOLOGY
APP ENG.	Charlie Z.	DATE	8-20-13
TITLE: TOP ASSEMBLY DRAWING:		HIGH VOLTAGE BUCK/BOOST	
		MULTI-CHEMISTRY BATTERY CHARGER	
SIZE	IC NO. LTC4020EUFH	REV.	2
N/A	DEMO CIRCUIT 2044A		
SCALE = NONE	FILENAME: DC2044A-2.PCB	SHT 1 of 2	